

DESCRIPTION

Regressed glass lens adjustable downlight shower trim with reflector is designed for use with IC or Non-IC AIR-TITE™ 3" Halo small aperture line and low voltage housings. Models 3007WHC, 3007PCC and 3007SN are "dead-front" featuring a glass lens with non-conductive and non-corrosive polymer trim rings. Model 3007TBZ has a die-cast trim ring. This wet location listed shower trim uses MR16 low voltage or GU10 line voltage lamps, ideal for accent and task lighting. Regressed lens trim offers 15° tilt with 360° orientation within housing.

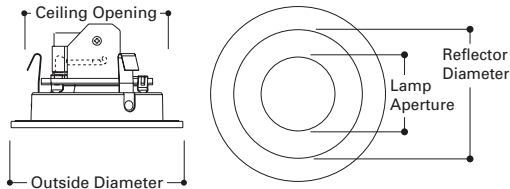
Catalog #		Type
Project		
Comments		Date
Prepared by		

SPECIFICATION FEATURES

Trim combinations include Specular Clear Reflector with Matte White or Polished Chrome trim ring, Satin Nickel reflector and trim ring, and Tuscan Bronze reflector and trim ring. Three pressure springs ensure positive retention in housing.

3007 is designed for use with the following Halo H3 small aperture housings:

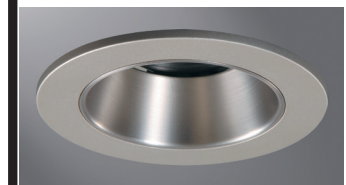
- Line Voltage Housing (for 120V GU10 lamps).
 - H36ICAT 50W IC Air-Tite Housing
 - H36TAT 50W Non-IC Air-Tite Housing
 - H36RTAT 50W Non-IC Air-Tite Remodel Housing
- Low Voltage Housing (for 12V MR16 lamps).
 - H36LVICAT 50W IC Air-Tite Housing
 - H36LVTAT 50W Non-IC Air-Tite Housing
 - H36LVRTAT 50W Non-IC Air-Tite Remodel Housing
 - H36LVTAT277 50W Non-IC Air-Tite Housing, 120/277V
 - H36LVRTAT277 50W Non-IC Air-Tite Remodel Housing, 120/277V
- Line Voltage Housing (for 120V GU10 lamps).
 - H38ICAT 50W IC Air-Tite Housing
- Low Voltage Housing (for 12V MR16 lamps).
 - H38LVICAT 37W IC Air-Tite Housing



Lamp Aperture: 2" [51mm]
 Reflector Diameter: 3" [75mm]
 Ceiling Opening: 3-3/4" [95mm]
 Outside Diameter: 4-1/4" [108mm]



3007WHC
White with Specular Clear Reflector



3007SN
Satin Nickel with Satin Nickel Reflector



3007TBZ
Tuscan Bronze with Tuscan Bronze Reflector



3007PCC
Polished Chrome with Specular Clear Reflector

3007

3" Regressed Lens Showerlight Trim



3" TRIMS

ORDERING INFORMATION

SAMPLE NUMBER: 3007PCC

Order housing and trims separately.

Trim	Finish
3007 = 3" Lensed Showerlight Trim	WHC =White with Specular Clear Reflector, Glass Lens, and Polymer Trim Ring "Dead-Front" PCC =Polished Chrome with Specular Clear Reflector, Glass Lens, and Polymer Trim Ring "Dead-Front" SN =Satin Nickel with Satin Nickel Reflector, Glass Lens, and Polymer Trim Ring "Dead-Front" TBZ =Tuscan Bronze with Tuscan Bronze Reflector, Glass Lens, and Die-Cast Trim Ring "Dead-Front"