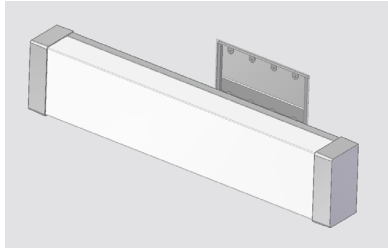
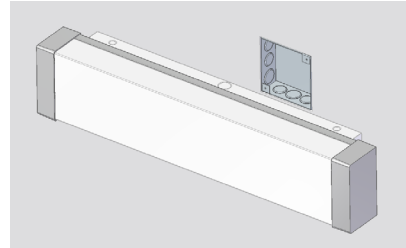


AVAILABLE CONFIGURATIONS



RECESSED MOUNT



SURFACE MOUNT

MOUNTING REQUIREMENTS

A. Recessed Mount: Minimum 4-Gang Box, 1-5/8 in. Deep (72.8 Cubic Inches) with 4-Gang Box Cover (20.3 Cubic Inches)

B. Surface Mount : 4" Square or 4" Octagon Junction Box

NECESSARY TOOLS

- Philips Head Screw Driver
- Wire Nuts

ENGLISH - WARNINGS & SAFETY INFORMATION: PLEASE READ CAREFULLY!

- **WARNING** - Risk of fire or electric shock. Luminaire wiring and electrical parts may be damaged when drilling for installation. Check for enclosed wiring and components.
- **WARNING** - Risk of fire or electric shock. If not qualified, do not attempt installation. Contact a qualified electrician.
- **WARNING** - Risk of fire or electric shock.
- Do not leave any other open holes in an enclosure of wiring or electrical components.
- **WARNING** - To prevent wiring damage or abrasion, do not expose wiring to edges of sheet metal or other sharp objects.
- **WARNING** - This product is sensitive to Electrical Static Discharge (ESD). Care should be taken to avoid direct contact with the LEDs. Installers should be grounded using a wrist strap or other suitable method of grounding. Failure to ground the installer may cause pre-mature failures and void the fixture warranty.

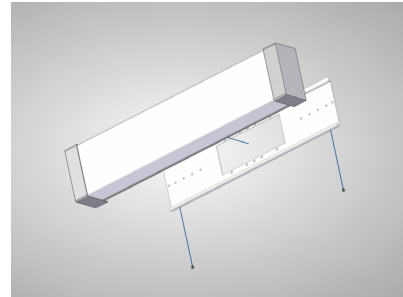
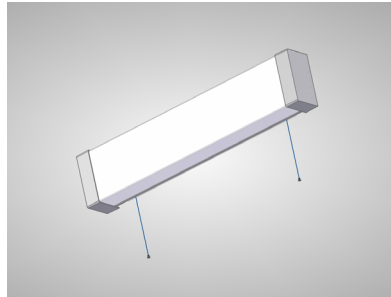
FRANÇAIS - MISES EN GARDE ET SÉCURITÉ: SE IL VOUS PLAÎT LIRE ATTENTIVEMENT!

- **AVERTISSEMENT** - Risque d'incendie ou de choc électrique. Câblage du luminaire et pièces électriques peuvent être endommagés lors du perçage pour l'installation. Vérifier le câblage et les composants intérieur.
- **AVERTISSEMENT** - Risque d'incendie ou de choc électrique. Si non qualifié, ne essayez pas l'installation. Contactez un électricien qualifié.
- **AVERTISSEMENT** - Risque d'incendie ou de choc électrique.
- Ne laissez pas d'autres trous ouverts dans un ensemble de câblage ou de composants électriques.
- **AVERTISSEMENT** - Pour éviter d'endommager le câblage ou l'abrasion, ne pas exposer le câblage aux bords ou d'autres objets pointus.
- **AVERTISSEMENT** - Ce produit est sensible aux décharges d'électricité statique (ES). Des précautions doivent être prises pour éviter le contact direct avec les DEL. Les installateurs doivent être mis à la terre en utilisant un bracelet ou une autre méthode appropriée de mise à la terre. Défaut de mécanisme à la terre le programme d'installation peut provoquer des défaillances prématurées et annuler la garantie du luminaire.

INSTALLATION INSTRUCTIONS FOR RECESSED MOUNT WALL BRACKET (PAGE 1 OF 2)

STEP 1

First remove the mounting bracket from the back of the fixture by unscrewing the two flat head screws located on the bottom of the fixture. Next, slide the mounting plate down to remove the bracket from the housing. Retain the screws as you will need these later to secure the fixture back to the mounting bracket.

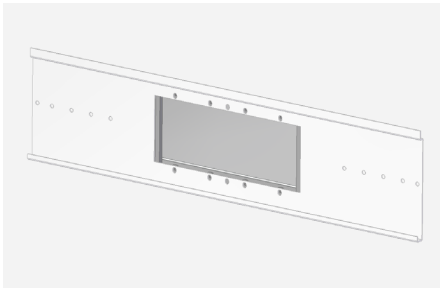
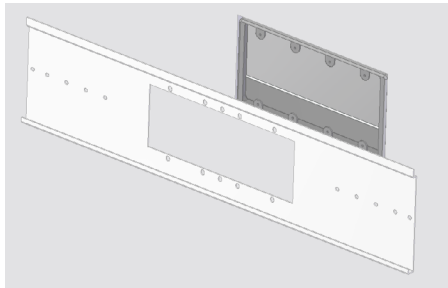


STEP 2

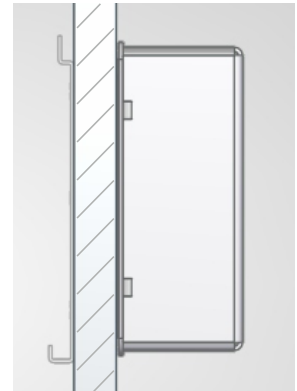
Attach the mounting plate to the 4-Gang junction box utilizing the screws provided with the junction box.

Additional holes are located on the mounting plate to add extra support for securing the mounting plate to the drywall.

To ensure proper fit. Make sure the orientation of the mounting bracket is similar as shown below. Mounting plate must be flat against the wall.



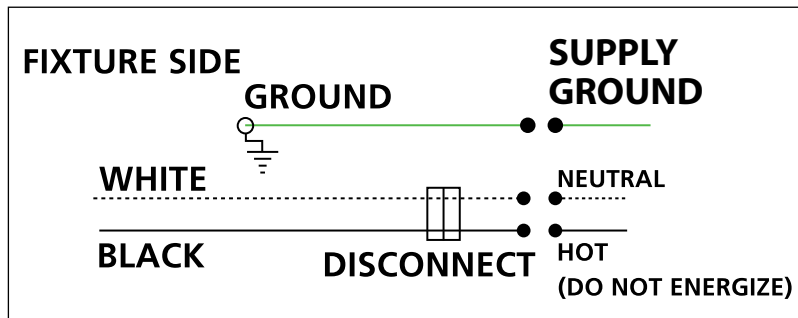
TOP



STEP 3

Route the input wires from the junction box thru the opening of mounting plate.

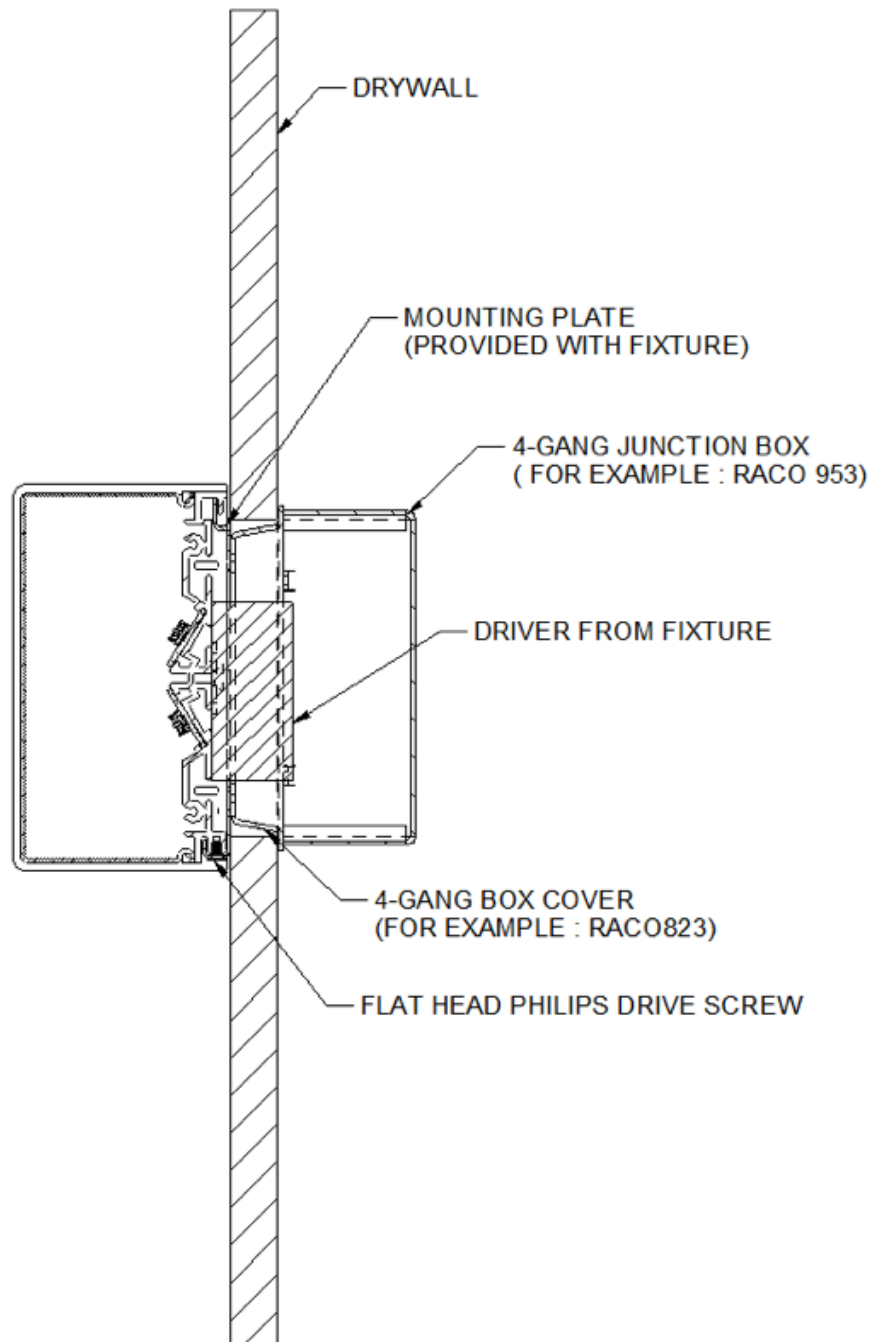
Connect green wires from fixture to ground wires from junction box. Connect incoming power lines to fixture with provided disconnects. Disconnects are safe for #12-#18 awg solid wire and #12-#14 awg stranded wire. Secure wires and place the wiring connections back inside the junction box.



INSTALLATION INSTRUCTIONS FOR RECESSED MOUNT WALL BRACKET (PAGE 2 OF 2)

STEP 4

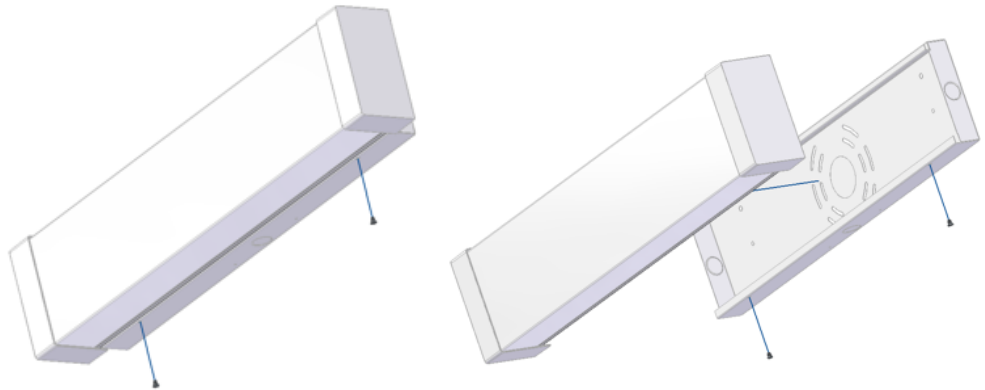
Center the fixture so the driver mounted on the back of the luminaire will pass through the opening on the semi recessed mounting plate. If you need to make adjustments to center the luminaire, loosen the screws on the driver and slide it along the center channel for proper alignment. Once aligned secure the driver by tightening the screws. Before installing the luminaire to the bracket ensure that all wires are clear of the opening to avoid pinching the connections. Next align the grooves with on the luminaire with the bracket and slide down until secure. Once secure reinstall the screws from step 1 and verify final installation appears as seen below.



INSTALLATION INSTRUCTIONS FOR SURFACE MOUNT WALL BRACKET (PAGE 1 OF 2)

STEP 1

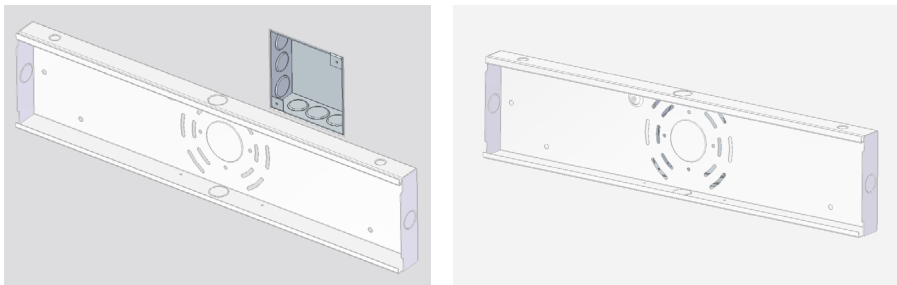
First remove the surface mount box from the back of the fixture by unscrewing the two flat head screws located on the bottom of the fixture. Next, slide the surface mounting box down to remove the surface mount box from the housing. Retain the screws as you will need these later to secure the fixture back to the mounting bracket.



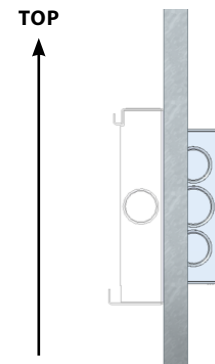
STEP 2

Attach the surface mount box to the installed 4" square or 4" octagon junction box using screws provided with the junction box.

Additional holes are located on the mounting plate to add extra support for securing the mounting plate to the drywall or concrete surface.

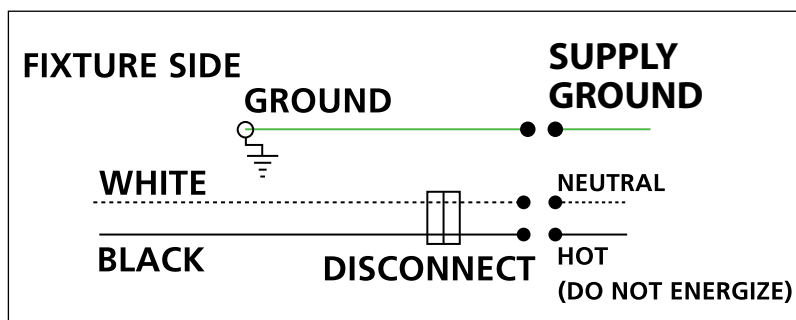


To ensure proper fit and installation. Make sure the orientation of the surface mount box is similar as shown below. Mounting plate must be flat against the wall.



STEP 3

Route the input wires from the junction box through the 2" KO provided in the surface mounting box. Connect green wires from fixture to ground wires from junction box. Connect incoming power lines to fixture with provided disconnects. Disconnects are safe for #12-#18 awg solid wire and #12-#14 awg stranded wire. Secure wires and place the wiring connections back inside the junction box.



INSTALLATION INSTRUCTIONS FOR SURFACE MOUNT WALL BRACKET (PAGE 2 OF 2)

STEP 4

Center the fixture so the driver mounted on the back of the luminaire will pass through the opening on the surface mount box. If you need to make adjustments to center the luminaire, loosen the screws on the driver and slide it along the center channel for proper alignment. Once aligned secure the driver by tightening the screws. Before installing the luminaire to the bracket ensure that all wires are clear of the opening to avoid pinching the connections. Next align the grooves with on the luminaire with the bracket and slide down until secure. Once secure reinstall the screws from step 1 and verify final installation appears as seen below.

