

### FEATURES

- High-performance LED luminaire
- Long-life, 60,000 hour LEDs at L80 (80% lumen maintenance) reduce life cycle maintenance costs
- DesignLights Consortium® qualified
- Four LED color choices
- Four lumen packages ranging from 2900 to 4550 nominal
- Superior color consistency to a 3-step MacAdam ellipse and 82 CRI
- Full distribution provides controlled high angle light for visual comfort
- Lens design and materials provide uniform appearance without pixilation
- Unique frameless optical system and modular electrical system allow for easy LED module or driver replacement from below the ceiling
- Most configurations produce low W/ft² to meet the most restrictive lighting power density codes
- U.S. Transformed

### PROJECT INFORMATION

Project Name \_\_\_\_\_

Type \_\_\_\_\_

Catalog No. \_\_\_\_\_

Date \_\_\_\_\_

### CONSTRUCTION

Luminaire housing, end caps, and reflectors are die-formed code-gauge cold-rolled steel. Frameless optics system hinges from either side for easy access to lamps and electrical components. Mechanical light trap prevents light leaks. Latches are spring loaded. Fixture standard construction is static, air handling return air side slots may be ordered as an option.

### FINISH

All visible parts are custom formulated soft, non-glare high-reflectance white powder coat finish, painted after fabrication.

### SHIELDING

Lenses are high transmission extruded acrylic.

### INSTALLATION

An access plate is furnished with each recessed fixture for fast wiring connections without the necessity to open the fixture or wireway.

### CEILING COMPATIBILITY

Luminaire fits recessed exposed grid ceilings (G); four integral T-Bar clips standard. A flange kit (FK) option is available for recessed hard ceiling applications. Surface Mount (SM) option allows placement on ceiling plane. Cable Mount option (CM) allows suspension below ceiling plane. For information on compatibility with specific ceilings, or where plenum depth is a problem, contact your Hubbell Lighting representative.

### CERTIFICATION

All luminaires are built to UL1598 and 2108 standards, and bear appropriate CSA labels. Damp location labeling is standard. Emergency equipped fixtures labeled UL924. Adheres to LM79, LM80 and TM21 standards. IC rating is standard on all models. Designlights Consortium® (DLC) qualified. Please refer to the DLC website for specific product qualifications at [www.designlights.org](http://www.designlights.org). UL Sanitation Approved.

### WARRANTY

Five year warranty. (Terms and Conditions apply)

### ORDERING INFORMATION

### EXAMPLE LEPC22-35HLG-LL-EDU

LEPC		22	-	- LL -		-	U	-
MODEL		COLOR TEMP	CEILING TYPE	AIR FUNCTION		DRIVER	VOLTAGE	OPTIONS
LEPC e-poc® LED Full Distribution Luminaire		30 3000K 35 3500K 40 4000K 50 5000K	G Grid SM Surface Mount For hard ceilings use flange kit.	Blank Static A Air Return Side Slots		E Fixed Output ED 0-10V Dimming ESD Fixed Output / Step Dimming <sup>4</sup>	U 120V-277V	C388 3-Wire Flex C488 4-Wire Flex C588 5-Wire Flex GLR Fast Blow Fuse NYC NYC Compliant NYCU NYC Compliant, Union Label RM Row Mount ELL14 Emergency Battery Pack Installed, 1400 Lumens <sup>3</sup> GTD Generator Transfer Device
SIZE		LUMEN OUTPUT		SHIELDING				
22 2' × 2'		LW Low Watt ML Medium Lumen HL High Lumen VL Very High Lumen (See Product Availability Table)		LL Low Lamp Image				

<sup>1</sup> In-Fixture Module Antenna adds 2" to overall fixture height at specific location.

<sup>2</sup> Not available with Surface Mount ceiling types.

<sup>3</sup> For compatibility with Dual-Lite LiteGear® inverters in lieu of installed Battery Pack, contact Hubbell Lighting Representative.

<sup>4</sup> Can be converted to fixed output by tying the hot leads together.

Damp Label - standard

IC Rating - standard

### ACCESSORIES (ORDER SEPARATELY)

FK22 2' x 2' Single Flange Kit  
FKCR Flange Kit Row Adaptor

### PRODUCT AVAILABILITY

SIZE	LUMEN PACKAGE	NOMINAL LUMENS (4000K)	NOMINAL WATTS	LUMENS PER WATT
2'x2'	LW	2900	25	117
	ML	3350	29	115
	HL	3975	35	112
	VL	4550	41	111

Lumens vary according to color temperatures and other factors. See specific photometric tests.

Protected by US Patents D603,999; D604,446.  
Additional US and Canada Patents Pending.  
Specifications subject to change without notice.

Page 1/3 Rev. 03/08/16

RECESSED ARCHITECTURAL / LEPC22

### PHOTOMETRIC DATA

#### LUMINAIRE DATA

Luminaire	LEPC22-40LWG-LL-EDU
	LEPC Epoc LED Full Distribution, Recessed Architectural
	2 x 2 LED with frosted linear prisms lenses
Ballast	D700C30UNVTZ-C
Ballast Factor	1.00
Lamp	LED
Fixture Lumens	2913
Watts	24.90
Shielding Angle	0° = 0 90° = 0
Spacing Criterion	0° = 1.16 90° = 1.24
Luminous Opening in Feet	Length: 1.83 Width: 1.83 Height: 0.00

#### ZONAL LUMEN SUMMARY

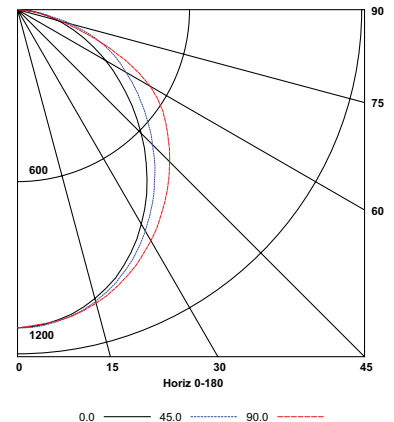
Zone	Lumens	% Lamp	% Fixt.
0-30	842	28.9	28.9
0-40	1357	46.6	46.6
0-60	2340	80.3	80.3
0-90	2913	100.0	100.0
0-180	2913	100.0	100.0

#### ENERGY DATA

Total Luminaire Efficiency	100.0%
Total Lumens per Watt	117
ANSI/IESNA RP-1-2004 COMPLIANCE	Noncompliant
Comparative Yearly Lighting Energy Cost per 1000 Lumens	\$2.05 based on 3000 hrs. and \$0.08 per KWH

Test 14.00501 Test Date 10/08/2014

#### INDOOR CANDELA PLOT



#### LUMINAIRE DATA

Luminaire	LEPC22-40MLG-LL-EDU
	LEPC Epoc LED Full Distribution, Recessed Architectural
	2 x 2 LED with frosted linear prisms lenses
Ballast	D700C30UNVTZ-C
Ballast Factor	1.00
Lamp	LED
Fixture Lumens	3362
Watts	29.20
Shielding Angle	0° = 90 90° = 90
Spacing Criterion	0° = 1.16 90° = 1.24
Luminous Opening in Feet	Length: 1.83 Width: 1.83 Height: 0.00

#### ZONAL LUMEN SUMMARY

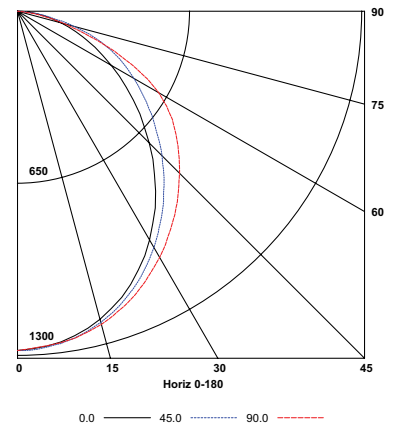
Zone	Lumens	% Lamp	% Fixt.
0-30	972	28.9	28.9
0-40	1567	46.6	46.6
0-60	2701	80.3	80.3
0-90	3362	100.0	100.0
0-180	3362	100.0	100.0

#### ENERGY DATA

Total Luminaire Efficiency	100.0%
Total Lumens per Watt	115
ANSI/IESNA RP-1-2004 COMPLIANCE	Noncompliant
Comparative Yearly Lighting Energy Cost per 1000 Lumens	\$2.07 based on 3000 hrs. and \$0.08 per KWH

Test 14.00500 Test Date 10/08/2014

#### INDOOR CANDELA PLOT



#### LUMINAIRE DATA

Luminaire	LEPC22-40HLG-LL-EDU
	LEPC Epoc LED Full Distribution, Recessed Architectural
	2 x 2 LED with frosted linear prisms lenses
Ballast	D10CC55UNVT-C
Ballast Factor	1.00
Lamp	LED
Fixture Lumens	3981
Watts	35.40
Shielding Angle	0° = 90 90° = 90
Spacing Criterion	0° = 1.17 90° = 1.25
Luminous Opening in Feet	Length: 1.83 Width: 1.83 Height: 0.00

#### ZONAL LUMEN SUMMARY

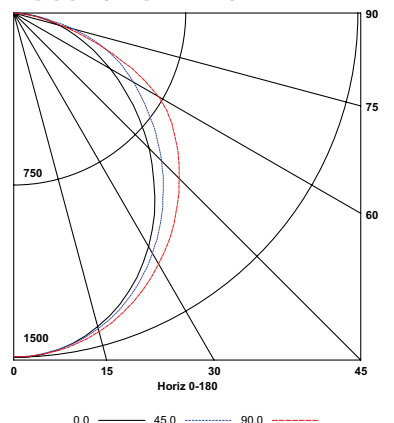
Zone	Lumens	% Lamp	% Fixt.
0-30	1141	28.6	28.6
0-40	1842	46.3	46.3
0-60	3186	80.0	80.0
0-90	3981	100.0	100.0
0-180	3981	100.0	100.0

#### ENERGY DATA

Total Luminaire Efficiency	100.0%
Total Lumens per Watt	112
ANSI/IESNA RP-1-2004 COMPLIANCE	Noncompliant
Comparative Yearly Lighting Energy Cost per 1000 Lumens	\$2.11 based on 3000 hrs. and \$0.08 per KWH

Test 14.00546 Test Date 10/17/2014

#### INDOOR CANDELA PLOT



### PHOTOMETRIC DATA

Test 14.00545 Test Date 10/17/2014

#### LUMINAIRE DATA

Luminaire	LEPC22-40VLG-LL-EDU
	LEPC E-poc LED Full Distribution, Recessed Architectural
	2 x 2 LED with frosted linear prisms lenses
Ballast	D10CC55UNVT-C
Ballast Factor	1.00
Lamp	LED
Fixture Lumens	4559
Watts	41.10
Shielding Angle	0° = 90 90° = 90
Spacing Criterion	0° = 1.17 90° = 1.25
Luminous Opening in Feet	Length: 1.83 Width: 1.83 Height: 0.00

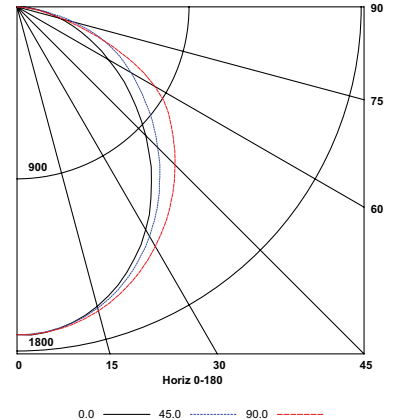
#### ZONAL LUMEN SUMMARY

Zone	Lumens	% Lamp	% Fixt.
0-30	1306	28.6	28.6
0-40	2109	46.3	46.3
0-60	3647	80.0	80.0
0-90	4559	100.0	100.0
0-180	4559	100.0	100.0

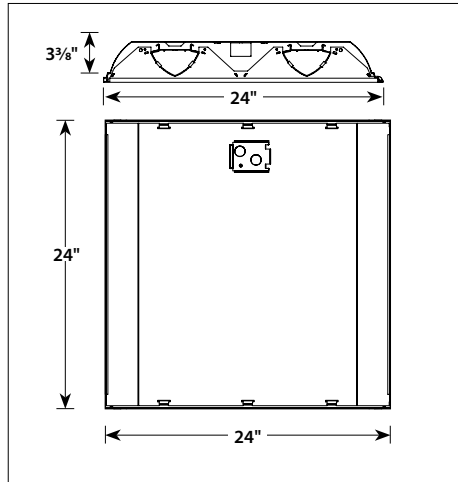
#### ENERGY DATA

Total Luminaire Efficiency	100.0%
Total Lumens per Watt	111
ANSI/IESNA RP-1-2004 COMPLIANCE	Noncompliant
Comparative Yearly Lighting Energy Cost per 1000 Lumens	\$2.16 based on 3000 hrs. and \$0.08 per KWH

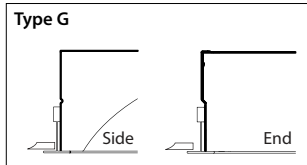
#### INDOOR CANDELA PLOT



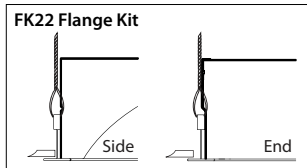
#### DIMENSIONAL DATA - GRID



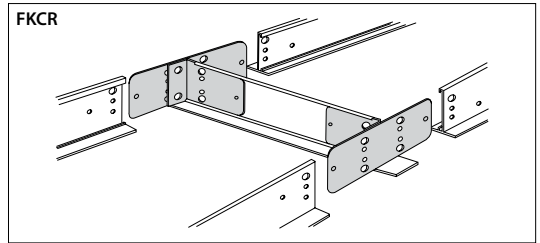
#### CEILING COMPATIBILITY



For lay-in installation in exposed grid ceilings. Maximum tee widths of 1" and maximum tee heights of 2" allowed.



For hard ceiling applications, order FK22 flange kit. Flange kit wires directly into concealed ceiling opening for a clean, finished appearance.

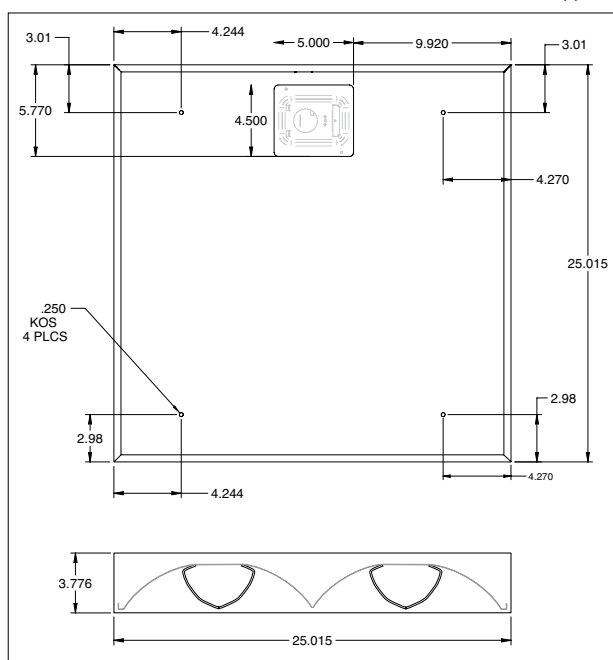


For flanged fixtures in row configurations, the FKCR adapter bracket kit is required in addition to the FK22 kit. Order one less FKCR than the total number of fixtures in row. (Example: Row of two, order (2) FK22 & (1) FKCR)

Row cut out dimensions using FK22s & FKCR adapters:  
Width 24 3/8", Length [24" x (# in row)] + 3/8".  
Example: (24" x 2) + 3/8" = 26 3/8"

Flange kit cut out dimension for single unit only: 24 3/8" x 24 3/8"

#### DIMENSIONAL DATA - SURFACE MOUNT



**NOTE:** All dimensions are in inches; dimensions and specifications are subject to change without notice. Please consult factory or check sample for verification.