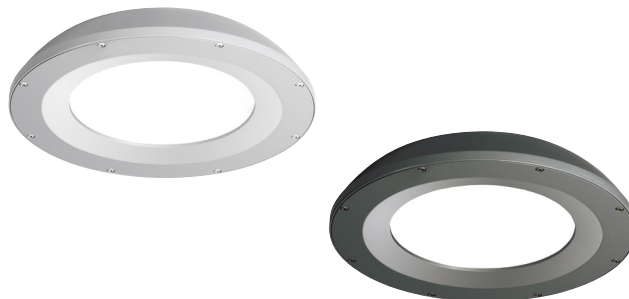


SRT1 EDGE-LIT

CEILING/SURFACE/GARAGE

DATE:	LOCATION:
TYPE:	PROJECT:
CATALOG #:	



FEATURES

- For ceiling mount and parking garage applications from an 8–15 foot mounting height
- Edge-lit flat lens for optimal visual comfort and uniformity across the lens
- Two optical distributions specifically design for parking garage and canopy applications are available making the Beacon Edge-Lit luminaire both versatile and functional
- UL/cUL listed for wet locations, IP65 and 3G vibration rated
- Occupancy sensor available for complete on/off and dimming operation



SPECIFICATIONS

HOUSING

- Die-cast aluminum housing ensures long electrical component life and luminaire performance
- Corrosion resistant powder coat finish both protects and provides architectural appearance
- One piece molded silicone gasket ensures weather proof seal
- Thermally isolated driver mounted to dedicated bracket reduces operating temperatures and increases driver life and reliability

OPTICS

- Edge-lit acrylic light guide provides blended non-pixelated light for unprecedented visual comfort
- Choice of multiple light outputs with lumen range of 2000–6000
- Two distribution types: Type 5 Square Wide, Type 5 Concentrated
- Wide variety of CCT's and CRI's offered: 3000K (70CRI), 3000K (80CRI), 3500K (80CRI), 4000K (70CRI), 4000K (80CRI) or 5000K (70 CRI) CCT

ELECTRICAL

- 120V–277V 50/60Hz available
- 0–10V dimming drivers are RoHS compliant
- Dimming Drivers are standard and dimming leads are extended out of the luminaire unless control options require connection to the dimming leads. Must specify if wiring leads are to be greater than the 24" standard

INSTALLATION

- Standard quick mount plate over standard 4" junction box or octagonal junction box and allows for simplified fixture installation
- Standard luminaire accepts a rigid or 3/4" NPT stem for pendant mounting via wet location j-box (by others)
- Optional bird deterrent shroud available for field installation

OPTIONS/CONTROLS

- Standalone occupancy sensor available for on/off or dimming operation
- Uplight option provides approximately 800 lumens and consumes only 8 additional watts
- Vandal resistant wire guard available as an option for factory installation or as an accessory for field installation
- Please consult brand or sales representative when combining control and electrical options as some combinations may not operate as anticipated depending on your application

CERTIFICATIONS

- Listed to UL1598 for use in wet location, listed for -40°C to 40°C applications
- IDA approved with zero uplight for 3000K and warmer CCTs
- DLC® (DesignLights Consortium) Qualified. Please refer to the DLC website for specific product qualifications at www.designlights.org
- This product qualifies as a "designated country construction material" per FAR 52.225-11 Buy American-Construction Materials under Trade Agreements effective 04/23/2020.
- IP65

WARRANTY

- 5 year warranty

KEY DATA	
Lumen Range	2000–6800
Wattage Range	15–55W
Efficacy Range (LPW)	99–118
Weight lbs. (kg)	8 (3.6)

SRT1 EDGE-LIT

CEILING/SURFACE/GARAGE

ORDERING GUIDE

Example: SRT1-35-3K7-5QW-UNV-BLT-WG

CATALOG # _____

Series	Engine	CCT	Distribution	Voltage	Color/Finish	Options
SRT1 Edge-Lit Parking Garage Size 1	15 15W Nominal 2000 lm	3K7 3000K, 70 CRI	5QW Type 5 Square Wide	UNV 120V- 277V	BLT Black Matte Textured	WG Wire Guard
	20 20W Nominal 2500 lm	3K8 3000K, 80 CRI	5C Type 5 Concentrated	120 120V	BLS Black Gloss Smooth	UD Uplight Module ³
	35 35W Nominal 4500 lm	35K8 3500K, 80 CRI		208 208V	DBT Dark Bronze Matte	F Single Fuse (120, 277) ¹
	55 55W Nominal 6500 lm	4K7 4000K, 70 CRI		240 240V	DBS Dark Bronze Gloss Smooth	LD3 36" Lead Length ²
		4K8 4000K, 80 CRI		277 277V	GTT Graphite Matte Textured	LD6 72" Lead Length ²
		5K7 5000K, 70 CRI			LGS Light Grey Gloss Smooth	LD9 108" Lead Length ²
					PSS Platinum Silver Smooth	SP10K 10kA Surge Protection ³
					WHT White Matte Textured	LMB Less Mounting Bracket
					WHS White Gloss Smooth	
					VGT Verde Green Textured	
					Color Option	
					CC Custom Colors	

Control Options	
NX Standalone³	
NXWS-12F	NX hubbNET Wireless Enabled Integral NXSM2P-OMNI PIR Occupancy Sensor with Automatic Dimming Photocell and Bluetooth Programming
Sensor Controls³	
SCP-8F	Remote control programmable line voltage sensor (8-12' recommended mounting height) ⁴
SCP-20F	Remote control programmable line voltage sensor (12-20' recommended mounting height) ⁴

Accessories (Order Separately)

- SRT1-WG** Wire Guard
- SRT-MB** Mounting bracket for pre-installation
- SRT1-BS-XXX** Bird deterrent shroud for SRT1 version, not available with uplight
- SCP-REMOTE** Remote control for SCP option; order at least on per project to program and control
- CLEDSJK** Whiteway stem and junction box

Notes:

- 1 Must specify voltage
- 2 Standard wire lead length 24"
- 3 SP10K, NX and SCP not available with uplight
- 4 120V or 277V only

PERFORMANCE DATA

Nominal Watts	Nominal Lumens	Distribution	5K (5000K NOMINAL 70 CRI)					4K (4000K NOMINAL 70 CRI)					3K (3000K NOMINAL 70 CRI)				
			Lumens	LPW	B	U	G	Lumens	LPW	B	U	G	Lumens	LPW	B	U	G
15	2500	5C	2470	146.61	1	0	1	2459	145.91	1	0	1	2364	140.30	1	0	1
		5QW	2378	141.15	1	0	1	2367	140.48	1	0	1	2276	135.07	1	0	1
20	3000	5C	3093	136.86	1	0	1	3078	136.21	1	0	1	2960	130.97	1	0	1
		5QW	2974	131.60	1	0	1	2960	130.97	1	0	1	2846	125.93	1	0	1
35	4500	5C	4757	131.05	2	0	1	4734	130.42	2	0	1	4552	125.41	2	0	1
		5QW	4574	126.01	2	0	1	4552	125.41	2	0	1	4377	120.58	2	0	1
55	6500	5C	6814	127.13	2	0	1	6782	126.52	2	0	1	6521	121.66	2	0	1
		5QW	6552	122.24	3	0	1	6521	121.66	3	0	1	6270	116.98	3	0	1

ELECTRICAL DATA

Nominal Watts	System Watts	Line Voltage		AMPS AC				Dimming Range	Absolute Voltage Range on 0-10V (+)	
		VAC	HZ	120	208	240	277		VAC	HZ
15	16.9	120-277	50/60	0.14	0.08	0.07	0.06	10% to 100%	0V	10V
20	21.6	120-277	50/60	0.18	0.10	0.09	0.08	10% to 100%	0V	10V
35	34.6	120-277	50/61	0.29	0.17	0.14	0.12	10% to 100%	0V	10V
55	54.9	120-277	50/62	0.46	0.26	0.23	0.20	10% to 100%	0V	10V

SRT1 EDGE-LIT

CEILING/SURFACE/GARAGE

PROJECTED LUMEN MAINTENANCE

Ambient Temp.	0	25,000	*TM-21-11 36,000	50,000	100,000	Calculated L ₇₀ (Hours)
25°C / 77°F	1.00	0.98	0.96	0.95	0.89	278,000
40°C / 104°F	0.99	0.98	0.96	0.94	0.88	264,000

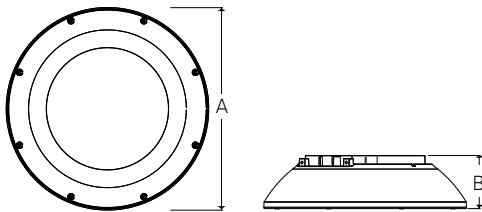
LUMINAIRE AMBIENT TEMPERATURE FACTOR (LATF)

Ambient Temperature		Lumen Multiplier
0°C	32°F	1.03
10°C	50°F	1.01
20°C	68°F	1.00
25°C	77°F	1.00
30°C	86°F	0.99
40°C	104°F	0.98

SRT LUMEN MULTIPLIER CHART

SRT Lumen Multiplier		
CCT	70 CRI	80 CRI
3000K	0.957	0.85
3500K	X	0.91
4000K	0.995	0.95
5000K	1	0.95

DIMENSIONS



A	B	Weight
12" (304mm)	3.1" (78mm)	8lbs (3.6kg)

ADDITIONAL INFORMATION

FINISH OPTIONS



Wire Guard

An optional wire guard can be specified at the factory or as an accessory for field installation.



Bird Deterrent

An optional bird shroud deterrent can be specified at the factory or as an accessory for field installation.

SRT1 EDGE-LIT

CEILING/SURFACE/GARAGE

ADDITIONAL INFORMATION (CONT'D)

MOUNTING



Surface Mount

Mounting plate with "quick mount" hanger for one person simple installation.



Pendant Mount

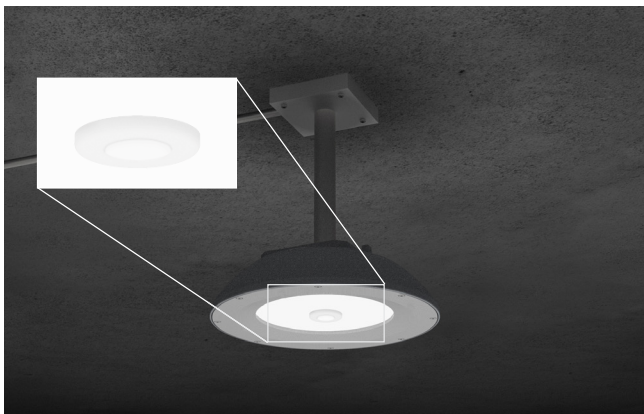
Standard 3/4" threaded entry for pendant applications. Pendant available as accessory



CLEDSJK

Whiteway stem and junction box

CONTROLS



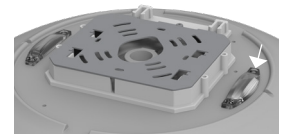
Standalone Controls

Optional passive infrared sensors are available for basic occupancy and daylight sensing. Programmable via remote or Bluetooth® phone app.

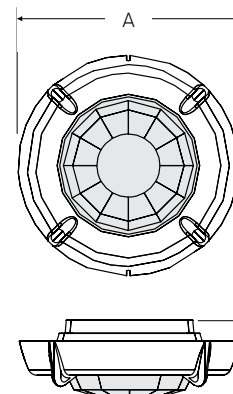
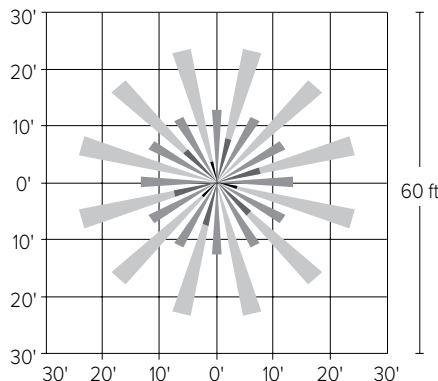
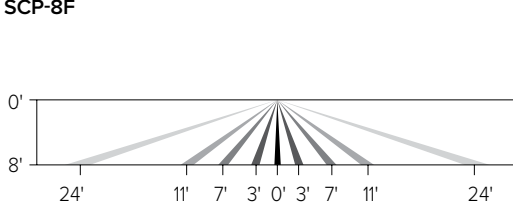


Uplight

Optional uplight module provides 800 lumens of indirect illumination for improved visual quality while eliminating cave effect.



SCP-8F



A	B
2.3" (59mm)	.8" (20mm)

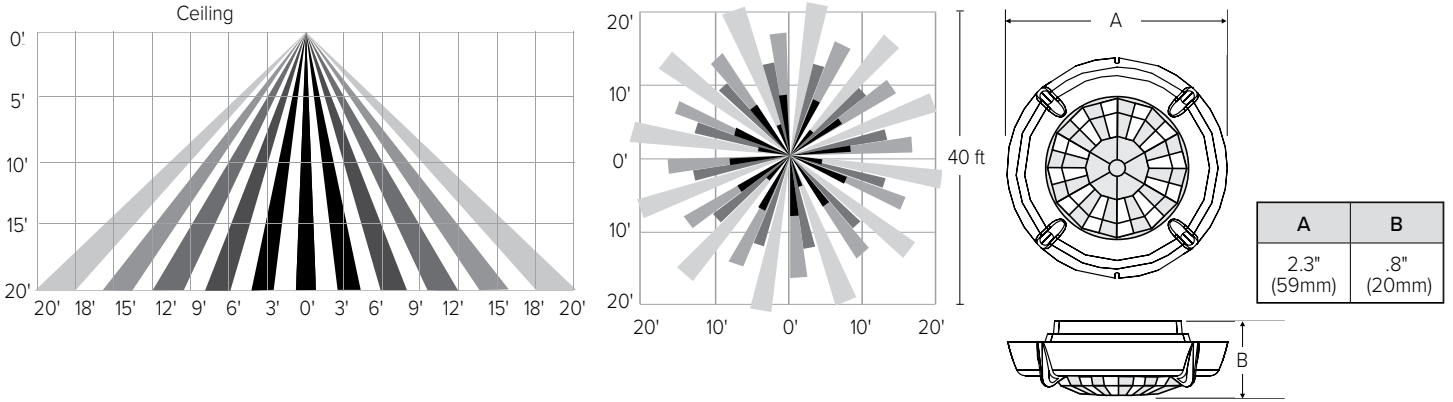
SRT1 EDGE-LIT

CEILING/SURFACE/GARAGE

ADDITIONAL INFORMATION (CONT'D)

CONTROLS (CONT'D)

SCP-20F



NXOS12F

