



RECESSED ADJUSTABLE

3-1/4" SQUARE APERTURE

Non-IC Rated, 20W,
39W CMH MR16

TC943MSQ

PRODUCT DESCRIPTION

Recessed adjustable metal halide MR16 luminaire with 3 1/4" square aperture and precision geared hot-aiming. Low profile non-IC housing is for use in non-insulated areas, or where insulation is spaced at least 3" from housing. Supplied with vertically adjustable mounting brackets that accept 1/2" conduit, "C" channel bar hangers, linear bar hangers or telescoping Real Nail bar hangers.

PRODUCT SPECIFICATIONS

Trims Style Die Cast Self Flanged and Flush Mount reflectors utilize precision wound double torsion springs for tight, secure fit to ceiling
 • Flange is same finish as reflector unless optional painted white flange is specified
 • Flush Mount trims must be used with FMASQ4 Flush Mount Adapter.

Lens Lampholder accommodates up to two (2) 2" captive accessory lenses.

Socket GX10 twist lock socket with quick disconnect for simplified maintenance.

Lamp One 20W or 39W CMH MR16 lamp max. (See trim for max. lamp rating)

Adjustability Acu-Aim™ precision geared hot-aiming achieves 370° rotation, 45° tilt
 • Optimized center lamp beam optics translates lamp forward as it is aimed off nadir, insuring maximum light and low brightness
 • Black aiming mechanism with shield prevents visibility into fixture and preserves dark aperture
 • Shield hinges out of way to facilitate maintenance.

Ballast High Power Factor, electronic solid state ballast with less than 10% THD
 • Features transient and short circuit protection
 • Available in 120V or 277V.

Codes/Labels UL and cUL listed for through-branch wiring, damp locations (wet location with approved trims)
 • Product thermally protected
 • Union made.

Mounting Bracket Rough-in section equipped with vertically adjustable mounting brackets that accept 1/2" conduit, "C" channels (HB-26 or HB-50), linear flat bars (LB-27) or 26" telescoping Real Nail bar hangers (HB-1).

Junction Box Rated for 8 No. 12 AWG 90° C through branch circuit conductors and includes (5) 1/2", (1) 3/4", and (4) Non-metallic sheathed cable knock-outs
 • Push-In electrical connectors for field connections.

Housing/Mounting Frame Black steel plaster frame and housing painted for visually dark interior
 • V-Notch in plaster frame aids fixture alignment during installation
 • Patent Pending Tru-Line™ Adjustment Mechanism featuring +/- 1/2" translation and +/- 45° aperture rotation aids fixture alignment after installation, prior to drywall.

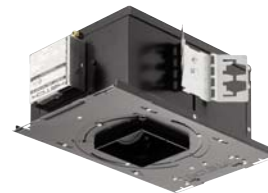
Ceiling Thickness 1/2" - 7/8" ceiling standard
 • For thicker ceilings, order CTA4SQ-125 (7/8"-1 1/4"), CTA4SQ-163 (1 1/4"-1 5/8") or CTA4SQ-200 (1 5/8" - 2").

Project: _____

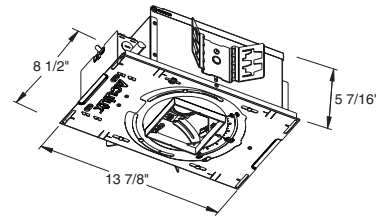
Fixture Type: _____

Location: _____

Contact/Phone: _____



DIMENSIONS



4 1/8" SQUARE CEILING CUTOUT
(4 1/4" SQUARE FOR FLUSH MOUNT)

Ordering Information Example: TC943MSQ-MR16-20E1

Housing	Wattage	Voltage	Options
TC943MSQ-MR16	20 20W 39 39W	E1 120V E2 277V	CP Chicago Plenum

Accessories

Cat. #	Description	Cat. #	Description
T741	Med. Pink Color Filter	T7420	Diffuse Spread Lens
T742	Warm Red Color Filter	T7422	UV Filter Lens
T743	Daylight Blue Color Filter	T7477	Prismatic Lens
T744	Med. Blue Color Filter	T7478	Linear Spread Lens
T745	Med. Amber Color Filter	T7459BL	Hexcell Louver
T746	Med. Green Color Filter	FMASQ4	Flush Mount Adapter
T7401	Red Dichroic Lens	CTA4SQ-125	1 1/4" Thick Ceiling Adapter
T7403	Med. Green Dichroic Lens	CTA4SQ-163	1 5/8" Thick Ceiling Adapter
T7404	Med. Blue Dichroic Lens	CTA4SQ-200	2" Thick Ceiling Adapter
T7405	Yellow Dichroic Lens	HB-1	(2) Real Nail 3 Bar Hangers
T7406	Magenta Dichroic Lens	HB-26	(2) 26" CChannel Bar Hangers
T7411	Blue Green Dichroic Lens	HB-50	(2) 50" CChannel Bar Hangers
T7416	Daylight Blue Correction Lens	LB-27	(2) 27" Linear Bar Hangers

To order, specify catalog number.

RECESSED ADJUSTABLE


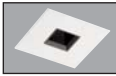
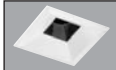
3-1/4" SQUARE APERTURE

Non-IC Rated, 20W or 39W CMH MR16

TC943MSQ

Trim Selection (Self Flanged & Flush Mount)

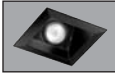
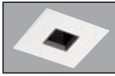
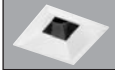
DOWNLIGHT (Self-Flanged Catalog # Shown)

	Cat. No.	Description	Lamp Rating
	4375QBHZ-SF†*	Black Haze Reflector	20W/39W
	4375QW-SF†*	White Reflector	CMH MR16
	4375QHZ-SF†*	Haze Reflector	
	4375QWHZ-SF†*	Wheat Haze Reflector	
	4337SQ-WH**	Black Alzak® Reflector	20W/39W CMH MR16
	4307SQ-WH**	Black Alzak® Reflector	20W/39W CMH MR16

LENSED (Self-Flanged Catalog # Shown)

	4325QBHZ-SF†*	Black Haze Reflector	20W/39W
	4325QW-SF†*	White Haze Reflector	CMH MR16
	4325QHZ-SF†*	Haze Reflector	
	4325QWHZ-SF†*	Wheat Haze Reflector	
	4315QBHZ-SF†*	Black Haze Reflector	20W/39W
	4315QW-SF†*	White Haze Reflector	CMH MR16
	4315QHZ-SF†*	Haze Reflector	
	4315QWHZ-SF†*	Wheat Haze Reflector	
	4332SQ-WH**	Black Alzak® Reflector	20W/39W CMH MR16
	4331SQ-WH**	Black Alzak® Reflector	20W/39W CMH MR16
	4302SQ-WH**	Black Alzak® Reflector	20W/39W CMH MR16
	4301SQ-WH**	Black Alzak® Reflector	20W/39W CMH MR16

ADJUSTABLE ACCENT (Self-Flanged Catalog # Shown)

	Cat. No.	Description	Lamp Rating
	4385QBHZ-SF†*	Black Haze Reflector	20W/39W
	4385QW-SF†*	White Reflector	CMH MR16
	4385QHZ-SF†*	Haze Reflector	
	4385QWHZ-SF†*	Wheat Haze Reflector	
	4335SQ-WH**	Black Alzak® Reflector	20W/39W CMH MR16
	4308SQ-WH**	Black Alzak® Reflector	20W/39W CMH MR16

WALL WASH (Self-Flanged Catalog # Shown)

	4395QBHZ-SF†*	Black Haze Reflector	20W/39W
	4395QW-SF†*	White Reflector	CMH MR16
	4395QHZ-SF†*	Haze Reflector	
	4395QWHZ-SF†*	Wheat Haze Reflector	

Flush Mount: *Replace "-WH" suffix with "-FM". **Add "-FM" to the Catalog #.

Flush Mount trims must be used with FMSQ4 Flush Mount Adapter, ordered separately.

†For self flanged reflector with optional white painted flange, replace "-SF" suffix with "-SFWH".