



RECESSED WALL WASH

3-1/4" LENSED WALL WASH

Non-IC Rated 20W, 39W CMH MR16

TC943M, 439N TRIM

PRODUCT DESCRIPTION

Recessed adjustable metal halide MR16 luminaire with 3 1/4" spread lens wall wash aperture and precision geared hot-aiming. Low profile non-IC housing is for use in non-insulated areas, or where insulation is spaced at least 3" from housing. Supplied with vertically adjustable mounting brackets that accept 1/2" conduit, "C" channel bar hangers, linear bar hangers or telescoping Real Nail bar hangers.

PRODUCT SPECIFICATIONS

Reflector .040" aluminum angle-cut reflector provides 50° lamp and lamp image cut-off • Specular clear kicker reflector directs light toward wall surface • Reflector finishes include White Paint and Clear, Gold, Black, Haze or Wheat Haze Alzak.

Trims Style Trim Ring, Self Flanged and Flush Mount reflectors utilize torsion spring retention for tight, secure fit to ceiling • Trim ring features beveled knife edge for clean ceiling interface • Self Flanged reflectors with polished or optional white painted flange • For flush mount installations in drywall ceilings use the FMA4 flush mount adapter • For flush mount installations in wood, stone, or tile ceilings the FMA4-SC*** must be used (specify ceiling thickness and adapter finish).

Lens Lampholder accommodates up to two (2) 2" captive accessory lenses.

Socket GX10 twist lock socket with quick disconnect for simplified maintenance.

Lamp One 20W or 39W CMH MR16 lamp.

Ballast High Power Factor, electronic solid state ballast with less than 10% THD • Features transient and short circuit protection • Available in 120V or 277V.

Codes/Labels UL and cUL listed for through branch wiring, wet locations • Product thermally protected • Union made.

Mounting Bracket Rough-in section equipped with vertically adjustable mounting brackets that accept 1/2" conduit, "C" channels (HB-26 or HB-50), linear flat bars (LB-27) or 26" telescoping Real Nail bar hangers (HB-1).

Junction Box Rated for 8 No. 12 AWG 90° C through branch circuit conductors and includes (5) 1/2", (1) 3/4", and (4) Non-metallic sheathed cable knock-outs • Push-in electrical connectors for field connections.

Housing/Mounting Frame Black steel plaster frame and housing painted for visually dark interior • V-Notch in plaster frame aids fixture alignment during installation • Adjustment Mechanism featuring +/- 1/2" translation aids fixture alignment after installation, prior to drywall.

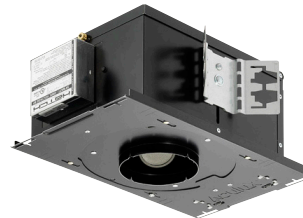
Ceiling Thickness 1/2" - 7/8" ceiling standard • For thicker ceilings, order CTA4N-125 (7/8"-1 1/4"), CTA4N-163 (1 1/4"-1 5/8") or CTA4N-200 (1 5/8"- 2") • CTA4N not required for wood, stone, or tile flush mount applications.

Project: _____

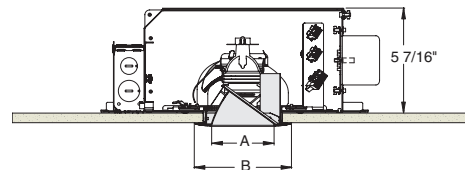
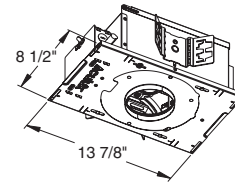
Fixture Type: _____

Location: _____

Contact/Phone: _____



DIMENSIONS



4 1/4" CEILING CUTOUT
(REFER TO INSTRUCTION SHEET FOR
FLUSH MOUNT CEILING CUTOUT)

	A	B
Trim Ring	3 1/4"	5"
Self Flanged	3 3/8"	4 11/16"
Flush Mount	3 3/8"	3 7/8"

RECESSED WALL WASH

3-1/4" LENSED WALL WASH

Non-IC Rated 20W, 39W CMH MR16

TC943M, 439N TRIM

Ordering Information

Housing, trim and accessories each ordered separately

Example: **TC943M-MR16-20E1**

Housing	Wattage	Voltage	Options
TC943M-MR16	20 20W 39 39W	E1 120V E2 277V	CP Chicago Plenum

Example: **439NC-WH**

Trim/Description



Trim Ring ¹	Self Flanged ²	Flush Mount ³	Description
439NB-WH	439NB-SF	439NB-FM	Black Cone
439NC-WH	439NC-SF	439NC-FM	Clear Cone
439NG-WH	439NG-SF	439NG-FM	Gold Cone
439NW-WH	439NW-SF	439NW-FM	White Painted Cone
439NHZ-SC	-	-	Haze Cone
439NHZ-WH	439NHZ-SF	439NHZ-FM	Haze Cone, White Ring
439NWHZ-ABZ	-	-	Wheat Haze Cone
439NWHZ-WH	439NWHZ-SF	439NWHZ-FM	Wheat Haze Cone, White Ring

¹Trim Ring Finish: ABZ - Classic Aged Bronze, SC - Satin Chrome, WH - White.

²For self flanged reflector with optional white painted flange, replace "-SF" suffix with "-SFWH".

³Flush Mount trims must be used with Flush Mount Adapter, ordered separately.

Product specifications subject to change without notice.

Flush Mount Adapters

FMA4	Description
FMA4-SC087-WH	Wood, Stone, Tile, 1/2"-7/8" Thick Ceiling, Adapter, White
FMA4-SC087-BL	Wood, Stone, Tile, 1/2"-7/8" Thick Ceiling, Adapter, Black
FMA4-SC125-WH	Wood, Stone, Tile, 7/8"-1 1/4" Thick Ceiling, Adapter, White
FMA4-SC125-BL	Wood, Stone, Tile, 7/8"-1 1/4" Thick Ceiling, Adapter, Black
FMA4-SC163-WH	Wood, Stone, Tile, 1 1/4"-1 5/8" Thick Ceiling, Adapter, White
FMA4-SC163-BL	Wood, Stone, Tile, 1 1/4"-1 5/8" Thick Ceiling, Adapter, Black

Optical Accessories

Cat. #	Description	Cat. #	Description
T741	Med. Pink Color Filter	T7405	Yellow Dichroic Lens
T742	Warm Red Color Filter	T7406	Magenta Dichroic Lens
T743	Daylight Blue Color Filter	T7411	Blue Green Dichroic Lens
T744	Med. Blue Color Filter	T7416	Daylight Blue Correction Lens
T745	Med. Amber Color Filter	T7420	Diffuse Spread Lens
T746	Med. Green Color Filter	T7422	UV Filter Lens
T7401	Red Dichroic Lens	T7477	Prismatic Lens
T7403	Med. Green Dichroic Lens	T7478	Linear Spread Lens
T7404	Med. Blue Dichroic Lens	T7459BL	Hexcell Louver

Misc. Accessories

CTA4N-125	1 1/4" Thick Ceiling Adapter
CTA4N-163	1 5/8" Thick Ceiling Adapter
CTA4N-200	2" Thick Ceiling Adapter
HB-1	(2) Real Nail 3 Bar Hangers
HB-26	(2) 26" C-Channel Bar Hangers
HB-50	(2) 50" C-Channel Bar Hangers
LB-27	(2) 27" Linear Bar Hangers

To order, specify catalog number.



PHOTOMETRIC REPORT

Catalog Number: TC943M (439NC-WH)

Test Number: PT12090305

Total Luminaire Efficiency: 54.3%

Luminaire Spacing Criteria @ 90°: 0.66

Luminaire: Clear Alzak® Lensed Wall Wash Trim.

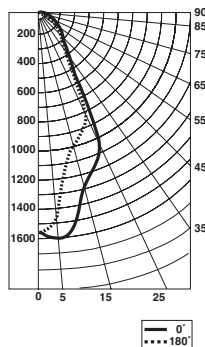
Lamps: One CMH39MR16/930/WFL, rated at 2200 total lumens.

Luminance Data (180° Downlight)

Ang in Deg	Footlamberts	Candela/M ²
45	8342	28582
55	0	0
65	0	0
75	0	0
85	0	0

Zonal Lumen Summary

Zone	Lumens	%Lamp	%Fixture
0-30°	810	36.8	67.8
0-40°	998	45.4	83.5
0-60°	1159	52.7	97.0
0-90°	1195	54.3	100.0
90-180°	0	0.0	0.0
0-180°	1195	54.3	100.0



Candlepower Distribution (Candelas)

Degrees Vertical	0° Wall Wash	180° Downlight
0°	1772	1772
5°	1742	1594
15°	1221	1099
25°	691	593
35°	325	293
45°	193	125
55°	119	0
65°	84	0
75°	30	0
85°	2	0

Footcandles on Wall from Multiple Fixtures

Fixture Distance to Wall Fixture Centers (spacing)	18"						24"					
	18"		24"		18"		24"		18"		24"	
1'	45	39	45	36	27	36	27	23	27	21	17	21
2'	48	44	48	39	33	39	34	34	34	27	25	27
3'	45	45	45	36	31	36	35	34	35	27	25	27
4'	41	41	41	32	30	32	33	35	33	26	25	26
5'	33	33	33	24	25	24	32	32	32	24	24	24
6'	25	25	25	18	19	18	29	28	29	21	21	21
7'	20	20	20	15	15	15	23	23	23	18	18	18
8'	16	17	16	12	12	12	19	20	19	15	15	15
9'	14	14	14	11	11	11	16	17	16	12	12	12

*Multipliers: Gold - 0.9, Black - 0.7, Haze - 0.95

*Note: Multipliers are provided for estimating purposes only.
Use IES photometric files for precise photometric information.

