



RECESSED ADJUSTABLE 3-1/4" BAFFLED APERTURE Non-IC Rated 20W, 39W CMH MR16 TC943M, 435N TRIM

PRODUCT DESCRIPTION

Recessed adjustable metal halide MR16 luminaire with 3/4" angle-cut grooved baffle aperture and precision geared hot-aiming. Low profile non-IC housing is for use in non-insulated areas, or where insulation is spaced at least 3" from housing. Supplied with vertically adjustable hlide mounting brackets that accept 1/2" conduit, "C" channel bar hangers, linear bar hangers or telescoping Real Nail bar hangers.

PRODUCT SPECIFICATIONS

Baffle Angle-cut grooved baffle available in white or black.

Trims Style Utilizes torsion spring retention for tight, secure fit to ceiling • Trim ring features beveled knife edge for clean ceiling interface.

Lens Lampholder accommodates up to two (2) 2" captive accessory lenses.

Socket GX10 twist lock socket with quick disconnect for simplified maintenance.

Lamp One 20W or 39W CMH MR16 lamp.

Adjustability Acu-Aim™ precision geared hot-aiming achieves 370° rotation, 45° tilt • Optimized center lamp beam optics translates lamp forward as it is aimed off nadir, insuring maximum light and low brightness • Black aiming mechanism with shield prevents visibility into fixture and preserves dark aperture • Shield hinges out of way to facilitate maintenance.

Ballast High Power Factor, electronic solid state ballast with less than 10% THD • Features transient and short circuit protection • Available in 120V or 277V.

Codes/Labels UL and cUL listed for through branch wiring, damp locations • Product thermally protected • Union made.

Mounting Bracket Rough-in section equipped with vertically adjustable mounting brackets that accept 1/2" conduit, "C" channels (HB-26 or HB-50), linear flat bars (LB-27) or 26" telescoping Real Nail bar hangers (HB-1).

Junction Box Rated for 8 No. 12 AWG 90° C through branch circuit conductors and includes (5) 1/2", (1) 3/4", and (4) Non-metallic sheathed cable knock-outs • Push-in electrical connectors for field connections.

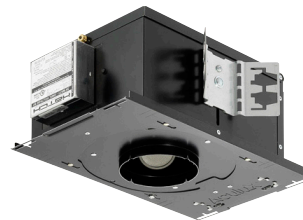
Housing/Mounting Frame Black steel plaster frame and housing painted for visually dark interior • V-Notch in plaster frame aids fixture alignment during installation • Patent pending Tru-Line™ Adjustment Mechanism featuring +/- 1/2" translation aids fixture alignment after installation, prior to drywall.

Project: _____

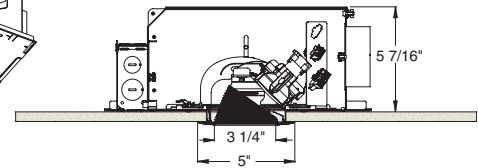
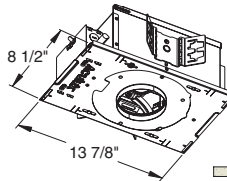
Fixture Type: _____

Location: _____

Contact/Phone: _____



DIMENSIONS



4 1/4" CEILING CUTOUT

Ceiling Thickness 1/2" - 7/8" ceiling standard • For thicker ceilings, order CTA4N-125 (7/8"-1 1/4"), CTA4N-163 (1 1/4"-1 5/8") or CTA4N-200 (1 5/8" - 2").

Ordering Information

Housing, trim and accessories each ordered separately

Example: **TC943M-MR16-20E1**

Housing	Wattage	Voltage	Options
TC943M-MR16	20 20W 39 39W	E1 120V E2 277V	CP Chicago Plenum

Example: **435NB-WH**

Trim/Description

Accessories

Cat. #	Description	Cat. #	Description
1741	Med. Pink Color Filter	17420	Diffuse Spread Lens
1742	Warm Red Color Filter	17422	UV Filter Lens
1743	Daylight Blue Color Filter	17477	Prismatic Lens
1744	Med. Blue Color Filter	17478	Linear Spread Lens
1745	Med. Amber Color Filter	17459BL	Hexcell Louver
1746	Med. Green Color Filter	CTA4N-125	1 1/4" Thick Ceiling Adapter
17401	Red Dichroic Lens	CTA4N-163	1 5/8" Thick Ceiling Adapter
17403	Med. Green Dichroic Lens	CTA4N-200	2" Thick Ceiling Adapter
17404	Med. Blue Dichroic Lens	HB-1	(2) Real Nail 3 Bar Hangers
17405	Yellow Dichroic Lens	HB-26	(2) 26" C-Channel Bar Hangers
17406	Magenta Dichroic Lens	HB-50	(2) 50" C-Channel Bar Hangers
17411	Blue Green Dichroic Lens	LB-27	(2) 27" Linear Bar Hangers
17416	Daylight Blue Correction Lens		

To order, specify catalog number.



Trim Ring	Description
435NB-WH	Black Baffle
435NB-ABZ	Black Baffle
435NB-SC	Black Baffle
435NW-WH	White Baffle, White Ring

Trim Ring Finish: ABZ - Classic Aged Bronze, SC - Satin Chrome, WH - White.
Product specifications subject to change without notice.

RECESSED ADJUSTABLE

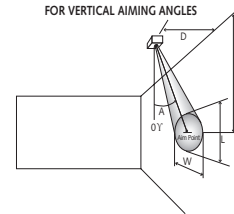
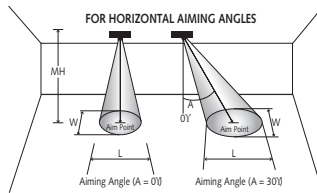
3-1/4" BAFFLED APERTURE



Non-IC Rated, 20W, 39W CMH MR16

TC943M, 435N TRIM

CBCP • Centerbeam candlepower
FC • Footcandles at beam center (aim point)

In vertical aiming applications, aim point (X) is determined by dividing distance from the wall (D) by the tangent of the desired aim angle (A) (0.5774 for 30°, 1.0 for 45°).



Lamp	Beam Type	Beam Spread°	Rated Life	CBCP	0°			30°			30°			45°						
					MH	FC	L	W	FC	L	W	D	FC	X	L	W	FC	X	L	W
20W MR16 Ceramic Metal Halide 	SP	12°	12000	9000	10	90	2.1	2.1	58	2.8	2.4	4	70	6.9	3.5	1.7	199	4.0	1.7	1.2
					12	63	2.5	2.5	41	3.4	2.9	6	31	10.4	5.2	2.5	88	6.0	2.6	1.8
					14	46	2.9	2.9	30	3.9	3.4	8	18	13.9	7.0	3.4	50	8.0	3.4	2.4
					16	35	3.4	3.4	23	4.5	3.9	10	11	17.3	8.7	4.2	32	10.0	4.3	3.0
					18	28	3.8	3.8	18	5.1	4.4	12	8	20.8	10.4	5.0	22	12.0	5.1	3.6
	FL	25°	12000	2900	8	45	3.5	3.5	29	4.8	4.1	2	91	3.5	4.2	1.8	256	2.0	1.9	1.3
					10	29	4.4	4.4	19	6.0	5.1	4	23	6.9	8.3	3.5	64	4.0	3.7	2.5
					12	20	5.3	5.3	13	7.2	6.1	6	10	10.4	12.5	5.3	28	6.0	5.6	3.8
					14	15	6.2	6.2	10	8.4	7.2	8	6	13.9	16.6	7.1	16	8.0	7.5	5.0
	WFL	40°	12000	1500	16	11	7.1	7.1	7	9.6	8.2	10	4	17.3	20.8	8.9	10	10.0	9.3	6.3
					8	23	5.8	5.8	15	8.1	6.7	2	47	3.5	9.7	2.9	133	2.0	3.4	2.1
					10	15	7.3	7.3	10	10.2	8.4	3	21	5.2	14.5	4.4	59	3.0	5.0	3.1
39W MR16 Ceramic Metal Halide 	SP	12°	12000	16000	10	160	2.1	2.1	104	2.8	2.4	4	125	6.9	3.5	1.7	354	4.0	1.7	1.2
					12	111	2.5	2.5	72	3.4	2.9	6	56	10.4	5.2	2.5	157	6.0	2.6	1.8
					14	82	2.9	2.9	53	3.9	3.4	8	31	13.9	7.0	3.4	88	8.0	3.4	2.4
					16	63	3.4	3.4	41	4.5	3.9	10	20	17.3	8.7	4.2	57	10.0	4.3	3.0
					18	49	3.8	3.8	32	5.1	4.4	12	14	20.8	10.4	5.0	39	12.0	5.1	3.6
	FL	25°	12000	5500	8	86	3.5	3.5	56	4.8	4.1	2	172	3.5	4.2	1.8	486	2.0	1.9	1.3
					10	55	4.4	4.4	36	6.0	5.1	4	43	6.9	8.3	3.5	122	4.0	3.7	2.5
					12	38	5.3	5.3	25	7.2	6.1	6	19	10.4	12.5	5.3	54	6.0	5.6	3.8
					14	28	6.2	6.2	18	8.4	7.2	8	11	13.9	16.6	7.1	30	8.0	7.5	5.0
	WFL	40°	12000	3000	16	21	7.1	7.1	14	9.6	8.2	10	7	17.3	20.8	8.9	19	10.0	9.3	6.3
					8	47	5.8	5.8	30	8.1	6.7	2	94	3.5	9.7	2.9	265	2.0	3.4	2.1
					10	30	7.3	7.3	19	10.2	8.4	3	42	5.2	14.5	4.4	118	3.0	5.0	3.1
12	21	8.7	8.7	14	12.2	10.1	4	23	6.9	19.3	5.8	66	4.0	6.7	4.1					
14	15	10.2	10.2	10	14.2	11.8	5	15	8.7	24.2	7.3	42	5.0	8.4	5.1					
16	12	11.6	11.6	8	16.2	13.4	6	10	10.4	**	8.7	29	6.0	10.1	6.2					

The beam spread in degrees and the beam "L" and "W" in the following tables are computed at 50% of centerbeam candlepower and represent areas of "effective illumination."

**Due to steep aiming angle, length of beam extends beyond 25'. Each angle is measured from 0° vertical.

