



RECESSED DOWNLIGHT

3-1/4" LENSED TRIM

Non-IC Rated, 75W MR16

TC943SQ, 432SQ TRIM

PRODUCT DESCRIPTION

Recessed MR16 downlight luminaire with 3 1/4" square aperture die cast reflector and tempered glass to protect lamp against water. Fixture has 50° visual cutoff to lamp and lamp image. Low profile non-IC housing is for use in non-insulated areas, or where insulation is spaced at least 3" from housing. Supplied with vertically adjustable mounting brackets that accept 1/2" conduit, "C" channel bar hangers, linear bar hangers or telescoping Real Nail bar hangers.

PRODUCT SPECIFICATIONS

Reflector Lensed, Die cast, parabolic reflector maintains low glare, tight corners, and 50° lamp and lamp image cut-off • Available in haze, black haze, wheat haze, or white finishes.

Trims Style Self Flanged and Flush Mount reflectors utilize precision wound double torsion springs for tight, secure fit to ceiling • Flange is same finish as reflector unless optional painted white flange is specified • For flush mount installations in drywall ceilings use the FMASQ4 flush mount adapter • For flush mount installations in wood, stone, or tile ceilings the FMASQ4-SC*** must be used (specify ceiling thickness and adapter finish).

Lens Lampholder accommodates up to three (3) 2" captive accessory lenses • Supplied with stippled clear uniformity lens.

Socket Ceramic bi-pin socket with double blade nickel alloy contacts • Quick disconnect for simplified maintenance.

Lamp One 75W MR16 lamp.

Transformer 120V High efficiency (>90%) dual tap magnetic, toroidal transformer has a boost tap to compensate for dimmer losses, improving color temperature and lumen output • Potted to eliminate noise and vibration • High efficiency (>94%), high power factor electronic transformer also available.

Dimming May be dimmed using dimmers specifically designed for low voltage magnetic or electronic transformers; consult factory or dimmer manufacturer for additional information.

Codes/Labels UL and cUL listed for through branch wiring, wet locations • Product thermally protected • Union made.

Mounting Bracket Rough-in section equipped with vertically adjustable mounting brackets that accept 1/2" conduit, "C" channels (HB-26 or HB-50), linear flat bars (LB-27) or 26" telescoping Real Nail bar hangers (HB-1).

Junction Box Rated for 8 No. 12 AWG 90° C through branch circuit conductors and includes (5) 1/2", (1) 3/4", and (4) Non-metallic sheathed cable knock-outs • Push-In electrical connectors for field connections.

Housing/Mounting Frame Black steel plaster frame and housing painted for visually dark interior • V-Notch in plaster frame aids fixture alignment during installation • Patent Pending Tru-Line™ Adjustment Mechanism featuring +/- 1/2" translation and +/- 45° aperture rotation aids fixture alignment after installation, prior to drywall.

Ceiling Thickness 1/2" – 7/8" ceiling standard • For thicker ceilings, order CTA4SQ-125 (7/8"-1 1/4"), CTA4SQ-163 (1 1/4"-1 5/8") or CTA4SQ-200 (1 5/8" – 2") • CTA4SQ not required for wood, stone, or tile flush mount applications.

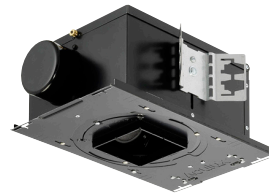


Project: _____

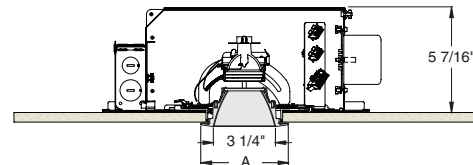
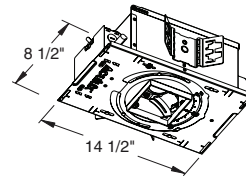
Fixture Type: _____

Location: _____

Contact/Phone: _____



DIMENSIONS



4 1/8" CEILING CUTOUT
(REFER TO INSTRUCTION SHEET FOR
FLUSH MOUNT CEILING CUTOUT)

	A
Self Flanged	4 1/2"
Flush Mount	3 5/8"

RECESSED DOWNLIGHT

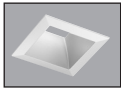
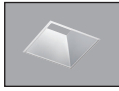
3-1/4" LENSED TRIM

Non-IC Rated, 75W MR16

TC943SQ, 432SQ TRIM

Ordering Information

Housing, trim and accessories each ordered separately

Example: TC943SQ-V			Example: 432SQW-SF		
Housing	Transformer	Options	Trim/Description		
TC943SQ	Blank 120V Magnetic V 277V Magnetic E1 120V Electronic E2 277V Electronic	CP Chicago Plenum			
			Self Flanged ¹	Flush Mount ²	Description
			432SQBHZ-SF	432SQBHZ-FM	Black Haze Reflector
			432SQHZ-SF	432SQHZ-FM	Haze Reflector
			432SQW-SF	432SQW-FM	White Reflector
			432SQWHZ-SF	432SQWHZ-FM	Wheat Haze Reflector

¹For self flanged reflector with optional white painted flange, replace "SF" suffix with "SFWH".

²Flush Mount trims must be used with Flush Mount Adapter, ordered separately.

Product specifications subject to change without notice.

Flush Mount Adapters

FMASQ4	Drywall Ceiling Adapter
FMASQ4-SC100-WH	Wood, Stone, Tile, 1/2"-1" Thick Ceiling, Adapter, White
FMASQ4-SC100-BL	Wood, Stone, Tile, 1/2"-1" Thick Ceiling, Adapter, Black
FMASQ4-SC138-WH	Wood, Stone, Tile, 1"-1 3/8" Thick Ceiling, Adapter, White
FMASQ4-SC138-BL	Wood, Stone, Tile, 1"-1 3/8" Thick Ceiling, Adapter, Black
FMASQ4-SC175-WH	Wood, Stone, Tile, 1 3/8"-1 3/4" Thick Ceiling, Adapter, White
FMASQ4-SC175-BL	Wood, Stone, Tile, 1 3/8"-1 3/4" Thick Ceiling, Adapter, Black

Optical Accessories

Cat. #	Description	Cat. #	Description
T741	Med. Pink Color Filter	T7405	Yellow Dichroic Lens
T742	Warm Red Color Filter	T7406	Magenta Dichroic Lens
T743	Daylight Blue Color Filter	T7411	Blue Green Dichroic Lens
T744	Med. Blue Color Filter	T7416	Daylight Blue Correction Lens
T745	Med. Amber Color Filter	T7420	Diffuse Spread Lens
T746	Med. Green Color Filter	T7422	UV Filter Lens
T7401	Red Dichroic Lens	T7477	Prismatic Lens
T7403	Med. Green Dichroic Lens	T7478	Linear Spread Lens
T7404	Med. Blue Dichroic Lens	T7459BL	Hexcell Louver

Misc. Accessories

CTA45Q-125	1 1/4" Thick Ceiling Adapter
CTA45Q-163	1 5/8" Thick Ceiling Adapter
CTA45Q-200	2" Thick Ceiling Adapter
HB-1	(2) Real Nail 3 Bar Hangers
HB-26	(2) 26" C-Channel Bar Hangers
HB-50	(2) 50" C-Channel Bar Hangers
LB-27	(2) 27" Linear Bar Hangers

To order, specify catalog number.



PHOTOMETRIC REPORT

Catalog Number: TC943SQ (432SQHZ-SF)

Test Number: PT001102602

Total Luminaire Efficiency: 65.3%

Luminaire Spacing Criteria: 0.53

Luminaire: Haze finish, square lensed shower trim.

Lamps: One 50MR16/1R/FL35/C, rated at 1200 total lumens.

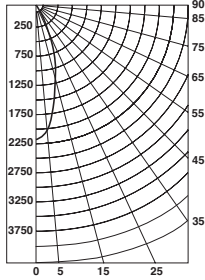
Initial Footcandles

Distance to Illuminated Plane (Feet)	Footcandles Beam Center	Footcandles Beam Edge	Beam Diameter
6'	60.7	26.8	3.5'
7'	44.6	19.7	4.1'
8'	34.1	15.1	4.7'
9'	27.0	11.9	5.3'
10'	21.8	9.6	5.9'
11'	18.0	8.0	6.5'
12'	15.2	6.7	7.0'
13'	12.9	5.7	7.6'
14'	11.1	4.9	8.2'
15'	9.7	4.3	8.8'

AVERAGE INITIAL FOOTCANDLES

Reflectances: 80% Ceiling, 50% Walls, 20% Floors

Luminaire Spacing	Room Cavity Ratio		
	RCR1	RCR3	RCR5
4' x 4'	55	50	45
5' x 5'	35	32	29
6' x 6'	24	22	20
7' x 7'	20	18	16
9' x 8'	16	14	13
9' x 9'	12	11	10
10' x 10'	9	8	7
12' x 12'	6	6	5



Candlepower Distribution (Candelas)

Angle	Candela	Lumens
0°	2184	
5°	2033	194
15°	1183	335
25°	434	201
35°	66	41
45°	12	10
55°	3	3
65°	0	0
75°	0	0
85°	0	0

Luminance Data

Ang in Deg	Footlamberts	Candela/M ²
45	757	2592
55	208	713
65	0	0
75	0	0
85	0	0

Zonal Lumen Summary

Zone	Lumens	%Lamp	%Fixture
0-30°	730	60.8	93.2
0-40°	772	64.3	98.4
0-60°	784	65.3	100.0
0-90°	784	65.3	100.0
90-180°	0	0.0	0.0
0-180°	784	65.3	100.0

COEFFICIENTS OF UTILIZATION - % (Zonal Cavity Method)

Effective Floor Reflectance 20%

PCC	80		70		50		30		10		0							
	PW	70	50	30	10	50	30	10	50	30	10	0						
0	78	78	78	78	76	76	76	76	73	73	73	69	69	69	67	67	67	65
1	75	73	72	71	73	72	71	70	69	68	68	67	66	66	65	64	64	63
2	72	70	67	66	71	68	67	65	66	65	64	65	63	62	63	62	61	60
3	69	66	64	62	68	65	63	61	64	62	60	62	61	59	61	59	58	57
4	67	63	60	58	66	62	60	58	61	59	57	60	58	56	59	57	56	55
5	65	60	57	55	64	60	57	55	59	56	54	58	56	54	57	55	54	53
6	62	58	55	53	62	57	55	52	56	54	52	56	53	52	55	53	51	51
7	60	56	53	50	60	55	52	50	54	52	50	54	51	50	53	51	50	49
8	58	53	50	48	58	53	50	48	52	50	48	52	50	48	51	49	48	47
9	56	51	48	46	56	51	48	46	51	48	46	50	48	46	50	48	46	45
10	55	50	47	45	54	49	47	45	49	46	45	49	46	44	48	46	44	44

PHOTOMETRIC REPORT

Catalog Number: TC943SQ (432SQHZ-SF)

Test Number: PT01102702

Total Luminaire Efficiency: 66.4%

Luminaire Spacing Criteria: 0.64

Luminaire: Haze finish, square lensed shower trim.

Lamps: One Q71MR16C/FL40, rated at 1200 total lumens.

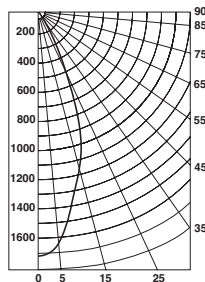
Initial Footcandles

Distance to Illuminated Plane (Feet)	Footcandles Beam Center	Footcandles Beam Edge	Beam Diameter
6'	47.5	19.4	4.6'
7'	34.9	14.2	5.3'
8'	26.7	10.9	6.1'
9'	21.1	8.6	6.8'
10'	17.1	7.0	7.6'
11'	14.1	5.8	8.3'
12'	11.9	4.8	9.1'
13'	10.1	4.1	9.9'
14'	8.7	3.6	10.6'
15'	7.6	3.1	11.4'

AVERAGE INITIAL FOOTCANDLES

Reflectances: 80% Ceiling, 50% Walls, 20% Floors

Luminaire Spacing	Room Cavity Ratio		
	RCR1	RCR3	RCR5
4' x 4'	56	50	45
5' x 5'	36	32	29
6' x 6'	25	22	20
7' x 7'	20	18	16
9' x 8'	16	14	13
9' x 9'	12	11	10
10' x 10'	9	8	7
12' x 12'	6	6	5



Candlepower Distribution (Candelas)

Angle	Candela	Lumens
0°	1709	
5°	1647	157
15°	1154	327
25°	525	243
35°	86	54
45°	16	13
55°	3	2
65°	0	0
75°	0	0
85°	0	0

Luminance Data

Ang in Deg	Footlamberts	Candela/M ²
45	983	3368
55	192	659
65	0	0
75	0	0
85	0	0

Zonal Lumen Summary

Zone	Lumens	%Lamp	%Fixture
0-30°	728	60.6	91.4
0-40°	781	65.1	98.1
0-60°	796	66.4	100.0
0-90°	796	66.4	100.0
90-180°	0	0.0	0.0
0-180°	796	66.4	100.0

COEFFICIENTS OF UTILIZATION - % (Zonal Cavity Method)

Effective Floor Reflectance 20%

PCC	80		70		50		30		10		0							
	PW	70	50	30	10	50	30	10	50	30	10	0						
0	79	79	79	79	77	77	77	77	74	74	74	71	71	71	68	68	68	66
1	76	74	73	72	74	73	72	71	70	69	68	68	67	66	66	65	64	63
2	73	70	68	66	72	69	67	65	67	65	64	65	64	63	63	62	61	60
3	70	67	64	62	69	66	63	61	64	62	60	62	61	59	61	60	58	57
4	67	63	60	58	66	63	60	58	61	59	57	60	58	56	59	57	56	55
5	65	60	57	55	64	60	57	54	59	56	54	57	55	54	57	55	53	52
6	62	57	54	52	61	57	54	52	56	53	51	55	53	51	54	52	51	50
7	60	55	52	49	59	55	51	49	54	51	49	53	51	49	52	50	49	48
8	58	53	49	47	57	52	49	47	51	49	47	51	49	47	50	48	46	46
9	56	50	47	45	55	50	47	45	50	47	45	49	47	45	49	46	45	44
10	54	48	45	43	53	48	45	43	48	45	43	47	45	43	47	45	43	42

