



PRODUCT DESCRIPTION

Recessed adjustable MR16 luminaire with mirrored adjustable trim featuring 15° to 75° hot-aiming. Precision engineered optics reduces aperture brightness and stray light on the ceiling. Low profile non-IC housing is for use in non-insulated areas, or where insulation is spaced at least 3" from housing. Supplied with vertically adjustable mounting brackets that accept 1/2" conduit, "C" channel bar hangers, linear bar hangers, or telescoping Real Nail bar hangers.

PRODUCT SPECIFICATIONS

Optics Die-Cast body features a clear glass mirror for maximum light output and precise beam control • Trims, available in white or black finish, feature a black baffle for low aperture brightness and to reduce stray light on the ceiling.

Trim Style Trims utilize torsion spring retention for tight, secure fit to ceiling • Trim ring features beveled knife edge for clean ceiling interface.

Lens Lampholder accommodates up to three (3) 2" captive accessory lenses • Supplied with stippled clear uniformity lens.

Socket Ceramic bi-pin socket with double blade nickel alloy contacts • Quick disconnect for simplified maintenance.

Lamp One 75W MR16 lamp.

Adjustability Acu-Aim™ precision geared aiming achieves 370° rotation while the trim features 15° to 75° tilt • Lamp aiming lock on trim allows the fixture to be relamped without disturbing the aiming.

Transformer High efficiency (>90%) dual tap magnetic, toroidal transformer has a boost tap to compensate for dimmer losses, improving color temperature and lumen output • Potted to eliminate noise and vibration • High efficiency (>94%), high power factor electronic transformer also available • 120V or 277V available.

Dimming May be dimmed using dimmers specifically designed for low voltage magnetic or electronic transformers; consult factory or dimmer manufacturer for additional information.

Codes/Labels UL and cUL listed for through branch wiring, damp locations • Product thermally protected • Union made.

Mounting Bracket Rough-in section equipped with vertically adjustable mounting brackets that accept 1/2" conduit, "C" channels (HB-26 or HB-50), linear flat bars (LB-27) or 26" telescoping Real Nail bar hangers (HB-1).

Junction Box Rated for 8 No. 12 AWG 90° C through branch circuit conductors and includes (5) 1/2", (1) 3/4", and (4) Non-metallic sheathed cable knock-outs • Push-in electrical connectors for field connections.

Housing/Mounting Frame Black steel plaster frame and housing painted for visually dark interior • V-Notch in plaster frame aids fixture alignment during installation • Patent pending Tru-Line™ Adjustment Mechanism featuring +/- 1/2" translation aids fixture alignment after installation, prior to drywall.

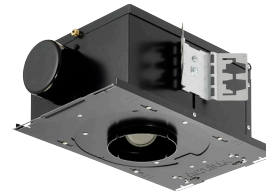
**RECESSED ADJUSTABLE
MIRRORED SUPER ADJUSTABLE**
Non-IC Rated, 75W MR16
TC943N, 4349N TRIM

Project: _____

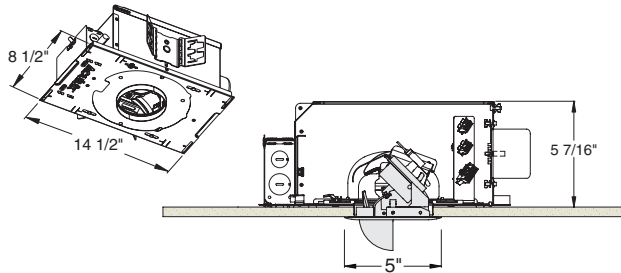
Fixture Type: _____

Location: _____

Contact/Phone: _____



DIMENSIONS



4 1/4" CEILING CUTOUT

Ceiling Thickness 1/2" - 7/8" ceiling standard • For thicker ceilings, order CTA4N-125 (7/8"-1 1/4"), CTA4N-163 (1 1/4"-1 5/8") or CTA4N-200 (1 5/8" - 2").

Ordering Information Housing, trim and accessories each ordered separately

Example: **TC943N-V**

Housing	Transformer	Options
TC943N	Blank 120V Magnetic V 277V Magnetic E1 120V Electronic E2 277V Electronic	CP Chicago Plenum

Example: **4349NB-WH**

Trim/Description



Trim Ring	Description
4349NB-WH	White Trim, Black Baffle
4349NB-BL	Black Trim, Black Baffle

Accessories

Cat. #	Description	Cat. #	Description
T741	Med. Pink Color Filter	T7420	Diffuse Spread Lens
T742	Warm Red Color Filter	T7422	UV Filter Lens
T743	Daylight Blue Color Filter	T7477	Prismatic Lens
T744	Med. Blue Color Filter	T7478	Linear Spread Lens
T745	Med. Amber Color Filter	T7459BL	Hexcell Louver
T746	Med. Green Color Filter	CTA4N-125	1 1/4" Thick Ceiling Adapter
T7401	Red Dichroic Lens	CTA4N-163	1 5/8" Thick Ceiling Adapter
T7403	Med. Green Dichroic Lens	CTA4N-200	2" Thick Ceiling Adapter
T7404	Med. Blue Dichroic Lens	HB-1	(2) Real Nail 3 Bar Hangers
T7405	Yellow Dichroic Lens	HB-26	(2) 26" C-Channel Bar Hangers
T7406	Magenta Dichroic Lens	HB-50	(2) 50" C-Channel Bar Hangers
T7411	Blue Green Dichroic Lens	LB-27	(2) 27" Linear Bar Hangers
T7416	Daylight Blue Correction Lens		

To order, specify catalog number.

Product specifications subject to change without notice.



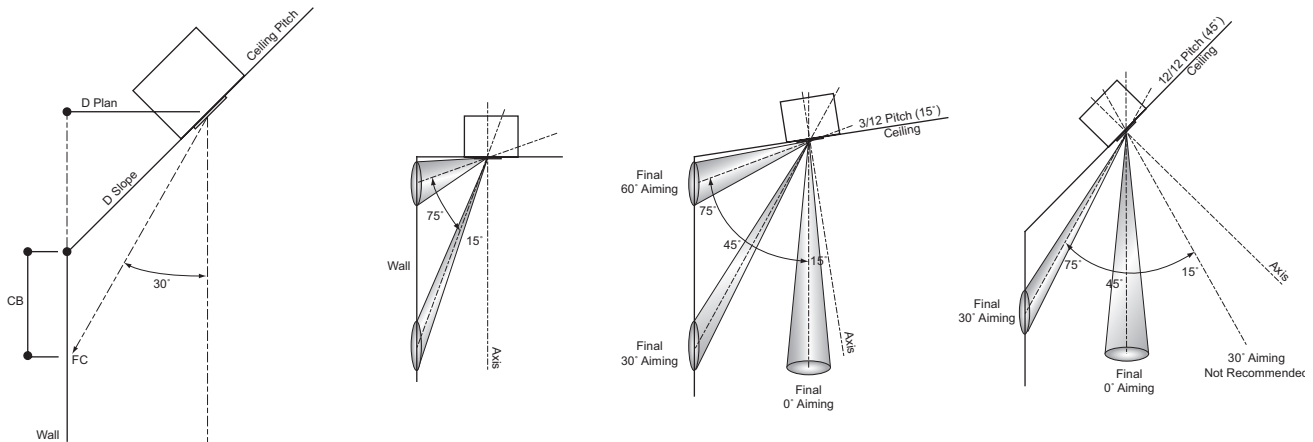
RECESSED ADJUSTABLE MIRRORED SUPER ADJUSTABLE

Non-IC Rated, 75W MR16
TC943N, 4349N TRIM

Pitch:		12/12				12/12				12/12				12/12			
Tilt of Element:		75°				75°				75°				75°			
Lamp:		OS 37MR16/IR/SP10				GE Q42MR16/VNSP				OS 50MR16/IR/SP10				OS 65MR16Q/10/NSP			
Beam Spread:		10° X 10°				9° X 9°				10° X 10°				10° X 10°			
Published CBCP:		13,100				12,500				15,700				14,000			
D Plan	D Slope	FC	L	W	CB	FC	L	W	CB	FC	L	W	CB	FC	L	W	CB
2'0"	2'9"	179	1'9"	1'0"	1'6"	129	1'3"	9"	1'6"	199	1'6"	9"	1'6"	196	1'6"	1'0"	1'6"
2'6"	3'6"	114	2'0"	1'3"	2'0"	83	1'6"	1'0"	2'0"	127	2'0"	1'3"	2'0"	126	2'0"	1'3"	2'0"
3'0"	4'3"	79	2'6"	1'6"	2'3"	57	1'9"	1'3"	2'3"	86	2'3"	1'6"	2'3"	87	2'3"	1'6"	2'3"
4'0"	5'6"	45	3'3"	1'9"	3'0"	32	2'6"	1'6"	3'0"	50	3'0"	1'9"	3'0"	49	2'9"	2'0"	3'0"

Pitch:		9/12				9/12				9/12				9/12			
Tilt of Element:		67°				67°				67°				67°			
Lamp:		OS 37MR16/IR/SP10				GE Q42MR16/VNSP				OS 50MR16/IR/SP10				OS 65MR16Q/10/NSP			
Beam Spread:		10° X 10°				9° X 9°				10° X 10°				10° X 10°			
Published CBCP:		13,100				12,500				15,700				14,000			
D Plan	D Slope	FC	L	W	CB	FC	L	W	CB	FC	L	W	CB	FC	L	W	CB
2'0"	2'6"	193	1'9"	1'0"	2'0"	152	1'3"	9"	2'0"	240	1'6"	1'0"	2'0"	263	1'3"	9"	2'0"
2'6"	3'0"	123	2'0"	1'3"	2'6"	97	1'6"	1'0"	2'6"	154	2'0"	1'3"	2'6"	168	1'9"	1'0"	2'6"
3'0"	3'9"	86	2'6"	1'6"	3'0"	68	2'0"	1'3"	3'0"	107	2'3"	1'6"	3'0"	117	2'0"	1'3"	3'0"
4'0"	5'0"	48	3'3"	1'9"	4'0"	38	2'6"	1'6"	4'0"	60	3'0"	2'0"	4'0"	65	2'9"	1'9"	4'0"

Pitch:		6/12				6/12				6/12				6/12			
Tilt of Element:		57°				57°				57°				57°			
Lamp:		OS 37MR16/IR/SP10				GE Q42MR16/VNSP				OS 50MR16/IR/SP10				OS 65MR16Q/10/NSP			
Beam Spread:		10° X 10°				9° X 9°				10° X 10°				10° X 10°			
Published CBCP:		13,100				12,500				15,700				14,000			
D Plan	D Slope	FC	L	W	CB	FC	L	W	CB	FC	L	W	CB	FC	L	W	CB
2'0"	2'3"	227	1'6"	9"	2'6"	147	1'3"	9"	2'6"	284	1'5"	1'0"	2'6"	312	1'3"	9"	2'6"
2'6"	2'9"	145	2'0"	1'0"	3'0"	94	1'6"	1'0"	3'0"	182	2'0"	1'3"	3'0"	200	1'9"	1'0"	3'0"
3'0"	3'4"	101	2'3"	1'3"	3'9"	66	2'0"	1'3"	3'9"	126	2'3"	1'6"	3'9"	139	2'0"	1'3"	3'9"
4'0"	4'5"	57	3'0"	1'9"	5'0"	37	2'6"	1'6"	5'0"	71	3'0"	2'0"	5'0"	78	2'9"	1'9"	5'0"



Notes & Definitions

The following diagrams represent the aiming of the unit for an effective 30° tilt angle from nadir in ceilings of different pitches; e.g. 75° - 12/12 pitch (or 45°) = 30°

For optimal performance, it is recommended that fixture is used for illuminating vertical surfaces.

The E3SA "Super Adjustable" element is capable of tilting the lamp's center beam from 15° to 75°; 361° in rotation. The spread of the lamp's beam will fill higher than 75° at maximum tilt.

The E3SA includes an LHEX louver for maximum control of glare if used where mirror is in view.

D Plan = Distance in plan view from wall

D Slope = Distance as actually measured along slope of ceiling from corner

FC = Maximum footcandles on wall within effective visual beam (EVB = 50% of max. FC)

L = Length of effective visual beam

W = Width of effective visual beam

CB = Distance down wall from corner to center of beam location

IRIS believes that bare lamp data photometrics vastly overstate the performance of low voltage adjustable accent fixtures.

The "real world photometrics" shown here are from off the shelf lamps in fixtures using clear lens and operated at 12.0 volts. Please see page 64 & 65 of the IRIS catalog for a further discussion and appropriate correction multipliers.

