



# RECESSED ADJUSTABLE 3-1/4" OPEN APERTURE Non-IC Rated, 75W MR16 TC943N, 430N TRIM

## PRODUCT DESCRIPTION

Recessed adjustable MR16 luminaire with 3/4" 20° angle-cut Alzak cone aperture and precision geared hot-aiming. Fixture has 50° visual cutoff to lamp and lamp image. Low profile non-IC use in non-insulated areas, or where insulation is spaced at least 3" from housing. Supplied with vertically adjustable mounting brackets that accept 1/2" conduit, "C" channel bar hangers, linear bar hangers or telescoping Real Nail bar hangers.

## PRODUCT SPECIFICATIONS

**Reflector** .040" aluminum 20° angle-cut reflector in clear, gold, black, haze, or wheat haze Alzak finish provides 50° lamp and lamp image cut-off.

**Trims Style** Trim Ring, Self Flanged and Flush Mount reflectors utilize torsion spring retention for tight, secure fit to ceiling • Trim ring features beveled knife edge for clean ceiling interface • Self Flanged reflectors with polished or optional white painted flange • For flush mount installations in drywall ceilings use the FMA4 flush mount adapter • For flush mount installations in wood, stone, or tile ceilings the FMA4-SC\*\*\* must be used (specify ceiling thickness and adapter finish).

**Lens** Lampholder accommodates up to three (3) 2" captive accessory lenses • Supplied with stippled clear uniformity lens.

**Socket** Ceramic bi-pin socket with double blade nickel alloy contacts • Quick disconnect for simplified maintenance.

**Lamp** One 75W MR16 lamp.

**Adjustability** Acu-Aim™ precision geared hot-aiming achieves 370° rotation, 20° tilt • Optimized center lamp beam optics translates lamp forward as it is aimed off nadir, insuring maximum light and low brightness • Black aiming mechanism with shield prevents visibility into fixture and preserves dark aperture • Shield hinges out of way to facilitate maintenance.

**Transformer** High efficiency (>90%) dual tap magnetic, toroidal transformer has a boost tap to compensate for dimmer losses, improving color temperature and lumen output • Potted to eliminate noise and vibration • High efficiency (>94%), high power factor electronic transformer also available • 120V or 277V available.

**Dimming** May be dimmed using dimmers specifically designed for low voltage magnetic or electronic transformers; consult factory or dimmer manufacturer for additional information.

**Codes/Labels** UL and cUL listed for through branch wiring, damp locations • Product thermally protected • Union made.

**Mounting Bracket** Rough-in section equipped with vertically adjustable mounting brackets that accept 1/2" conduit, "C" channels (HB-26 or HB-50), linear flat bars (LB-27) or 26" telescoping Real Nail bar hangers (HB-1).

**Junction Box** Rated for 8 No. 12 AWG 90° C through branch circuit conductors and includes (5) 1/2", (1) 3/4", and (4) Non-metallic sheathed cable knock-outs • Push-in electrical connectors for field connections.

**Housing/Mounting Frame** Black steel plaster frame and housing painted for visually dark interior • V-Notch in plaster frame aids fixture alignment during installation • Patent pending Tru-Line™ Adjustment Mechanism featuring +/- 1/2" translation aids fixture alignment after installation, prior to drywall.

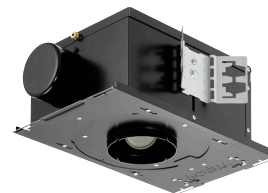
**Ceiling Thickness** 1/2" – 7/8" ceiling standard • For thicker ceilings, order CTA4N-125 (7/8"-1 1/4"), CTA4N-163 (1 1/4"-1 5/8") or CTA4N-200 (1 5/8"- 2") • CTA4N not required for wood, stone, or tile flush mount applications.

Project: \_\_\_\_\_

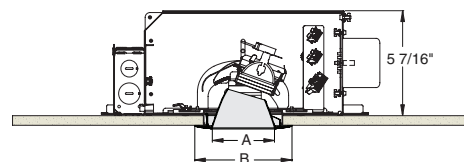
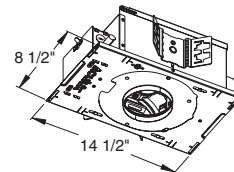
Fixture Type: \_\_\_\_\_

Location: \_\_\_\_\_

Contact/Phone: \_\_\_\_\_



## DIMENSIONS



4 1/4" CEILING CUTOUT  
(REFER TO INSTRUCTION SHEET FOR  
FLUSH MOUNT CEILING CUTOUT)

|              | A      | B      |
|--------------|--------|--------|
| Trim Ring    | 3 1/4" | 5"     |
| Self Flanged | 3 3/8" | 4 5/8" |
| Flush Mount  | 3 3/8" | 3 7/8" |

# RECESSED ADJUSTABLE

## 3-1/4" OPEN APERTURE

### Non-IC Rated, 75W MR16

## TC943N, 430N TRIM



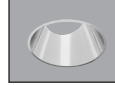
### Ordering Information

Housing, trim and accessories each ordered separately

Example: **TC943N-V**

| Housing       | Transformer  | Options                  |
|---------------|--|--------------------------|
| <b>TC943N</b> | <b>Blank</b> 120V Magnetic<br><b>V</b> 277V Magnetic<br><b>E1</b> 120V Electronic<br><b>E2</b> 277V Electronic | <b>CP</b> Chicago Plenum |

Example: **430NC-WH**

| Trim/Description  |  |   |                             |
|---|--|---|-----------------------------|
|  |  |  |                             |
| Trim Ring <sup>1</sup>  | Self Flanged <sup>2</sup>  | Flush Mount <sup>3</sup>  | Description                 |
| <b>430NB-WH</b>   | <b>430NB-SF</b>  | <b>430NB-FM</b>   | Black Cone                  |
| <b>430NC-WH</b>   | <b>430NC-SF</b>  | <b>430NC-FM</b>   | Clear Cone                  |
| <b>430NG-WH</b>   | <b>430NG-SF</b>  | <b>430NG-FM</b>   | Gold Cone                   |
| <b>430NHZ-SC</b>  | -  | -   | Haze Cone                   |
| <b>430NHZ-WH</b>  | <b>430NHZ-SF</b>   | <b>430NHZ-FM</b>  | Haze Cone, White Ring       |
| <b>430NWHZ-ABZ</b>  | -  | -   | Wheat Haze Cone             |
| <b>430NWHZ-WH</b>   | <b>430NWHZ-SF</b>  | <b>430NWHZ-FM</b>   | Wheat Haze Cone, White Ring |

<sup>1</sup>Trim Ring Finish: ABZ - Classic Aged Bronze, SC - Satin Chrome, WH - White.  
<sup>2</sup>For self flanged reflector with optional white painted flange, replace "-SF" suffix with "-SFWH".  
<sup>3</sup>Flush Mount trims must be used with Flush Mount Adapter, ordered separately.  
 Product specifications subject to change without notice.

### Flush Mount Adapters

| FMA4                 | Description  |
|----------------------|--|
| <b>FMA4-SC087-WH</b> | Wood, Stone, Tile, 1/2"-7/8" Thick Ceiling, Adapter, White     |
| <b>FMA4-SC087-BL</b> | Wood, Stone, Tile, 1/2"-7/8" Thick Ceiling, Adapter, Black     |
| <b>FMA4-SC125-WH</b> | Wood, Stone, Tile, 7/8"-1 1/4" Thick Ceiling, Adapter, White   |
| <b>FMA4-SC125-BL</b> | Wood, Stone, Tile, 7/8"-1 1/4" Thick Ceiling, Adapter, Black   |
| <b>FMA4-SC163-WH</b> | Wood, Stone, Tile, 1 1/4"-1 5/8" Thick Ceiling, Adapter, White |
| <b>FMA4-SC163-BL</b> | Wood, Stone, Tile, 1 1/4"-1 5/8" Thick Ceiling, Adapter, Black |

### Optical Accessories

| Cat. #       | Description                | Cat. #         | Description                   |
|--------------|----------------------------|----------------|-------------------------------|
| <b>T741</b>  | Med. Pink Color Filter     | <b>T7405</b>   | Yellow Dichroic Lens          |
| <b>T742</b>  | Warm Red Color Filter      | <b>T7406</b>   | Magenta Dichroic Lens         |
| <b>T743</b>  | Daylight Blue Color Filter | <b>T7411</b>   | Blue Green Dichroic Lens      |
| <b>T744</b>  | Med. Blue Color Filter     | <b>T7416</b>   | Daylight Blue Correction Lens |
| <b>T745</b>  | Med. Amber Color Filter    | <b>T7420</b>   | Diffuse Spread Lens           |
| <b>T746</b>  | Med. Green Color Filter    | <b>T7422</b>   | UV Filter Lens                |
| <b>T7401</b> | Red Dichroic Lens          | <b>T7477</b>   | Prismatic Lens                |
| <b>T7403</b> | Med. Green Dichroic Lens   | <b>T7478</b>   | Linear Spread Lens            |
| <b>T7404</b> | Med. Blue Dichroic Lens    | <b>T7459BL</b> | Hexcell Louver                |

### Misc. Accessories

|                  |                               |
|------------------|-------------------------------|
| <b>CTA4N-125</b> | 1 1/4" Thick Ceiling Adapter  |
| <b>CTA4N-163</b> | 1 5/8" Thick Ceiling Adapter  |
| <b>CTA4N-200</b> | 2" Thick Ceiling Adapter      |
| <b>HB-1</b>      | (2) Real Nail 3 Bar Hangers   |
| <b>HB-26</b>     | (2) 26" C-Channel Bar Hangers |
| <b>HB-50</b>     | (2) 50" C-Channel Bar Hangers |
| <b>LB-27</b>     | (2) 27" Linear Bar Hangers    |

To order, specify catalog number.



# RECESSED ADJUSTABLE

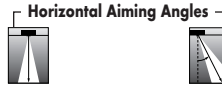
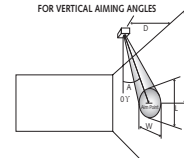
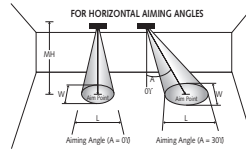
## 3-1/4" OPEN APERTURE

### Non-IC Rated, 75W MR16

## TC943N, 430N TRIM

**CBCP** • Centerbeam candlepower  
**FC** • Footcandles at beam center (aim point)

In vertical aiming applications, aim point (X) is determined by dividing distance from the wall (D) by the tangent of the desired aim angle (A) (0.5774 for 30°, 1.0 for 45°).



| Lamp                       | Beam Type | Beam Spread <sup>o</sup> | Rated Life | CBCP  | 0°  |     | 30° |     |     | 30° |     |    |     |      |      |     |
|----------------------------|-----------|--------------------------|------------|-------|-----|-----|-----|-----|-----|-----|-----|----|-----|------|------|-----|
|                            |           |                          |            |       | MH  | FC  | L   | W   | FC  | L   | W   | D  | FC  | X    | L    | W   |
| 37W MR16 Halogen IR        | NSP       | 10°                      | 5000       | 12500 | 6   | 347 | 1.0 | 1.0 | 226 | 1.4 | 1.2 | 3  | 174 | 5.2  | 2.1  | 1.0 |
|                            |           |                          |            |       | 8   | 195 | 1.4 | 1.4 | 127 | 1.9 | 1.6 | 4  | 98  | 6.9  | 2.9  | 1.4 |
|                            |           |                          |            |       | 10  | 125 | 1.7 | 1.7 | 81  | 2.3 | 2.0 | 5  | 63  | 8.7  | 3.6  | 1.7 |
|                            |           |                          |            |       | 12  | 87  | 2.1 | 2.1 | 56  | 2.8 | 2.4 | 6  | 43  | 10.4 | 4.3  | 2.0 |
|                            | NFL       | 25°                      | 5000       | 4400  | 4   | 275 | 1.8 | 1.8 | 179 | 2.4 | 2.0 | 2  | 138 | 3.5  | 4.2  | 1.8 |
|                            |           |                          |            |       | 6   | 122 | 2.7 | 2.7 | 79  | 3.6 | 3.1 | 3  | 61  | 5.2  | 6.2  | 2.7 |
|                            |           |                          |            |       | 8   | 69  | 3.5 | 3.5 | 45  | 4.8 | 4.1 | 4  | 34  | 6.9  | 8.3  | 3.5 |
|                            | FL        | 35°                      | 5000       | 2200  | 3   | 244 | 1.9 | 1.9 | 159 | 2.6 | 2.2 | 2  | 69  | 3.5  | 7.2  | 2.5 |
|                            |           |                          |            |       | 4   | 138 | 2.5 | 2.5 | 89  | 3.5 | 2.9 | 3  | 31  | 5.2  | 10.8 | 3.8 |
| 42W MR16 Halogen           | VNSP      | 9°                       | 3500       | 12300 | 8   | 192 | 1.3 | 1.3 | 125 | 1.7 | 1.5 | 4  | 96  | 6.9  | 2.6  | 1.3 |
|                            |           |                          |            |       | 10  | 123 | 1.6 | 1.6 | 80  | 2.1 | 1.8 | 5  | 62  | 8.7  | 3.2  | 1.6 |
|                            |           |                          |            |       | 12  | 85  | 1.9 | 1.9 | 55  | 2.5 | 2.2 | 6  | 43  | 10.4 | 3.8  | 1.9 |
|                            |           |                          |            |       | 14  | 63  | 2.2 | 2.2 | 41  | 2.9 | 2.5 | 7  | 31  | 12.1 | 4.5  | 2.2 |
|                            | NSP       | 15°                      | 6000       | 9100  | 6   | 253 | 1.6 | 1.6 | 164 | 2.1 | 1.8 | 3  | 126 | 5.2  | 3.3  | 1.6 |
|                            |           |                          |            |       | 8   | 142 | 2.1 | 2.1 | 92  | 2.8 | 2.4 | 4  | 71  | 6.9  | 4.4  | 2.1 |
|                            |           |                          |            |       | 10  | 91  | 2.6 | 2.6 | 59  | 3.5 | 3.0 | 5  | 46  | 8.7  | 5.6  | 2.6 |
|                            | NFL       | 25°                      | 6000       | 3200  | 4   | 200 | 1.8 | 1.8 | 130 | 2.4 | 2.0 | 2  | 100 | 3.5  | 4.2  | 1.8 |
|                            |           |                          |            |       | 6   | 89  | 2.7 | 2.7 | 58  | 3.6 | 3.1 | 3  | 44  | 5.2  | 6.2  | 2.7 |
| 8                          |           |                          |            |       | 50  | 3.5 | 3.5 | 32  | 4.8 | 4.1 | 4   | 25 | 6.9 | 8.3  | 3.5  |     |
| FL                         | 40°       | 6000                     | 1700       | 3     | 189 | 2.2 | 2.2 | 123 | 3.0 | 2.5 | 2   | 53 | 3.5 | 9.7  | 2.9  |     |
|                            |           |                          |            | 4     | 106 | 2.9 | 2.9 | 69  | 4.1 | 3.4 | 3   | 24 | 5.2 | 14.5 | 4.4  |     |
| 50W MR16 Halogen IR Lensed | SP        | 10°                      | 5000       | 15000 | 6   | 417 | 1.0 | 1.0 | 217 | 1.4 | 1.2 | 3  | 208 | 5.2  | 2.1  | 1.0 |
|                            |           |                          |            |       | 8   | 234 | 1.4 | 1.4 | 152 | 1.9 | 1.6 | 4  | 117 | 6.9  | 2.9  | 1.4 |
|                            |           |                          |            |       | 10  | 150 | 1.7 | 1.7 | 97  | 2.3 | 2.0 | 5  | 75  | 8.7  | 3.6  | 1.7 |
|                            |           |                          |            |       | 12  | 104 | 2.1 | 2.1 | 68  | 2.8 | 2.4 | 6  | 52  | 10.4 | 4.3  | 2.1 |
|                            | NFL       | 25°                      | 5000       | 5700  | 4   | 356 | 1.8 | 1.8 | 231 | 2.1 | 2.0 | 2  | 178 | 3.5  | 4.2  | 1.8 |
|                            |           |                          |            |       | 6   | 158 | 2.7 | 2.7 | 103 | 3.6 | 3.1 | 3  | 79  | 5.2  | 6.2  | 2.7 |
|                            |           |                          |            |       | 8   | 89  | 3.5 | 3.5 | 58  | 4.8 | 4.1 | 4  | 45  | 6.9  | 8.3  | 3.5 |
|                            | FL        | 35°                      | 5000       | 2850  | 3   | 317 | 1.9 | 1.9 | 206 | 2.6 | 2.2 | 2  | 89  | 3.5  | 7.2  | 2.5 |
|                            |           |                          |            |       | 4   | 178 | 2.5 | 2.5 | 116 | 3.5 | 2.9 | 3  | 40  | 5.2  | 10.8 | 3.8 |
| 71W MR16 Halogen           | SP        | 15°                      | 4000       | 11500 | 6   | 319 | 1.6 | 1.6 | 207 | 2.1 | 1.8 | 3  | 160 | 5.2  | 3.3  | 1.6 |
|                            |           |                          |            |       | 8   | 180 | 2.1 | 2.1 | 117 | 2.8 | 2.4 | 4  | 90  | 6.9  | 4.4  | 2.1 |
|                            |           |                          |            |       | 10  | 115 | 2.6 | 2.6 | 75  | 3.5 | 3.0 | 5  | 58  | 8.7  | 5.6  | 2.6 |
|                            |           |                          |            |       | 12  | 80  | 3.2 | 3.2 | 52  | 4.2 | 3.6 | 6  | 40  | 10.4 | 6.7  | 3.2 |
|                            | NFL       | 25°                      | 4000       | 5500  | 4   | 344 | 1.8 | 1.8 | 223 | 2.4 | 2.0 | 2  | 172 | 3.5  | 4.2  | 1.8 |
|                            |           |                          |            |       | 6   | 153 | 2.7 | 2.7 | 99  | 3.6 | 3.1 | 3  | 76  | 5.2  | 6.2  | 2.7 |
|                            |           |                          |            |       | 8   | 86  | 3.5 | 3.5 | 56  | 4.8 | 4.1 | 4  | 43  | 6.9  | 8.3  | 3.5 |
|                            | FL        | 40°                      | 4000       | 2200  | 3   | 244 | 2.2 | 2.2 | 159 | 3.0 | 2.5 | 2  | 69  | 3.5  | 9.7  | 2.9 |
|                            |           |                          |            |       | 4   | 138 | 2.9 | 2.9 | 89  | 4.1 | 3.4 | 3  | 31  | 5.2  | 14.5 | 4.4 |

The beam spread in degrees and the beam "L" and "W" in the following tables are computed at 50% of centerbeam candlepower and represent areas of "effective illumination."

