



**PRODUCT DESCRIPTION**

Recessed downlight MR16 luminaire with 3 1/4" spread lens wall wash aperture and precision geared hot-aiming. Fixture has 50° visual cutoff to lamp and lamp image. Low profile non-IC housing is for use in non-insulated areas, or where insulation is spaced at least 3" from housing. Supplied with vertically adjustable mounting brackets that accept 1/2" conduit, "C" channel bar hangers, linear bar hangers or telescoping Real Nail bar hangers.

**PRODUCT SPECIFICATIONS**

**Reflector** .040" aluminum angle-cut reflector provides 50° lamp and lamp image cut-off • Specular clear kicker reflector directs light toward wall surface • Reflector finishes include White Paint and Clear, Gold, Black, Haze or Wheat Haze Alzak.

**Trims Style** Trim Ring, Self Flanged and Flush Mount reflectors utilize torsion spring retention for tight, secure fit to ceiling • Trim ring features beveled knife edge for clean ceiling interface • Self Flanged reflectors with polished or optional white painted flange • For flush mount installations in drywall ceilings use the FMA4 flush mount adapter • For flush mount installations in wood, stone, or tile ceilings the FMA4-SC\*\*\* must be used (specify ceiling thickness and adapter finish).

**Lens** Lampholder accommodates up to three (3) 2" captive accessory lenses • Supplied with stippled clear uniformity lens.

**Socket** Ceramic bi-pin socket with double blade nickel alloy contacts • Quick disconnect for simplified maintenance.

**Lamp** One 75W MR16 lamp.

**Transformer** High efficiency (>90%) dual tap magnetic, toroidal transformer has a boost tap to compensate for dimmer losses, improving color temperature and lumen output • Potted to eliminate noise and vibration • High efficiency (>94%), high power factor electronic transformer also available • 120V or 277V available.

**Dimming** May be dimmed using dimmers specifically designed for low voltage magnetic or electronic transformers; consult factory or dimmer manufacturer for additional information.

**Codes/Labels** UL and cUL listed for through branch wiring, wet locations • Product thermally protected • Union made.

**Mounting Bracket** Rough-in section equipped with vertically adjustable mounting brackets that accept 1/2" conduit, "C" channels (HB-26 or HB-50), linear flat bars (LB-27) or 26" telescoping Real Nail bar hangers (HB-1).

**Junction Box** Rated for 8 No. 12 AWG 90° C through branch circuit conductors and includes (5) 1/2", (1) 3/4", and (4) Non-metallic sheathed cable knock-outs • Push-in electrical connectors for field connections.

**Housing/Mounting Frame** Black steel plaster frame and housing painted for visually dark interior • V-Notch in plaster frame aids fixture alignment during installation • Patent pending Tru-Line™ Adjustment Mechanism featuring +/- 1/2" translation aids fixture alignment after installation, prior to drywall.

**Ceiling Thickness** 1/2" – 7/8" ceiling standard • For thicker ceilings, order CTA4N-125 (7/8"-1 1/4"), CTA4N-163 (1 1/4"-1 5/8") or CTA4N-200 (1 5/8"– 2") • CTA4N not required for wood, stone, or tile flush mount applications.

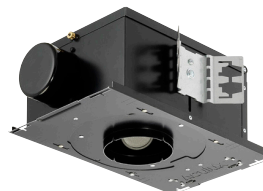
**RECESSED WALL WASH**  
**3-1/4" LENSED WALL WASH**  
 Non-IC Rated, 75W MR16  
**TC943N, 439N TRIM**

Project: \_\_\_\_\_

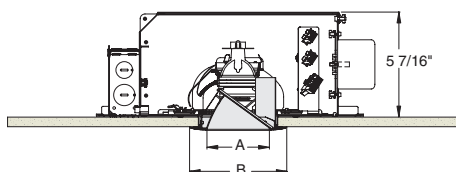
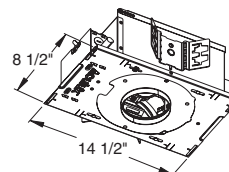
Fixture Type: \_\_\_\_\_

Location: \_\_\_\_\_

Contact/Phone: \_\_\_\_\_



**DIMENSIONS**



**4 1/4" CEILING CUTOUT**  
 (REFER TO INSTRUCTION SHEET FOR  
 FLUSH MOUNT CEILING CUTOUT)

	A	B
Trim Ring	3 1/4"	5"
Self Flanged	3 3/8"	4 5/8"
Flush Mount	3 3/8"	3 7/8"

# RECESSED WALL WASH

## 3-1/4" LENSED WALL WASH

### Non-IC Rated, 75W MR16

## TC943N, 439N TRIM




### Ordering Information

Housing, trim and accessories each ordered separately

Example: **TC943N-V**

Housing	Transformer	Options
<b>TC943N</b>	<b>Blank</b> 120V Magnetic <b>V</b> 277V Magnetic <b>E1</b> 120V Electronic <b>E2</b> 277V Electronic	<b>CP</b> Chicago Plenum

Example: **439NC-WH**

Trim/Description			
			
Trim Ring <sup>1</sup>	Self Flanged <sup>2</sup>	Flush Mount <sup>3</sup>	Description
<b>439NB-WH</b>	<b>439NB-SF</b>	<b>439NB-FM</b>	Black Cone
<b>439NC-WH</b>	<b>439NC-SF</b>	<b>439NC-FM</b>	Clear Cone
<b>439NG-WH</b>	<b>439NG-SF</b>	<b>439NG-FM</b>	Gold Cone
<b>439NW-WH</b>	<b>439NW-SF</b>	<b>439NW-FM</b>	White Painted Cone
<b>439NHZ-SC</b>	-	-	Haze Cone
<b>439NHZ-WH</b>	<b>439NHZ-SF</b>	<b>439NHZ-FM</b>	Haze Cone, White Ring
<b>439NWHZ-ABZ</b>	-	-	Wheat Haze Cone
<b>439NWHZ-WH</b>	<b>439NWHZ-SF</b>	<b>439NWHZ-FM</b>	Wheat Haze Cone, White Ring

<sup>1</sup>Trim Ring Finish: ABZ - Classic Aged Bronze, SC - Satin Chrome, WH - White.

<sup>2</sup>For self flanged reflector with optional white painted flange, replace "SF" suffix with "-SEWH".

<sup>3</sup>Flush Mount trims must be used with Flush Mount Adapter, ordered separately.

Product specifications subject to change without notice.

### Flush Mount Adapters

FMA4	Description
<b>FMA4-SC087-WH</b>	Wood, Stone, Tile, 1/2"-7/8" Thick Ceiling, Adapter, White
<b>FMA4-SC087-BL</b>	Wood, Stone, Tile, 1/2"-7/8" Thick Ceiling, Adapter, Black
<b>FMA4-SC125-WH</b>	Wood, Stone, Tile, 7/8"-1 1/4" Thick Ceiling, Adapter, White
<b>FMA4-SC125-BL</b>	Wood, Stone, Tile, 7/8"-1 1/4" Thick Ceiling, Adapter, Black
<b>FMA4-SC163-WH</b>	Wood, Stone, Tile, 1 1/4"-1 5/8" Thick Ceiling, Adapter, White
<b>FMA4-SC163-BL</b>	Wood, Stone, Tile, 1 1/4"-1 5/8" Thick Ceiling, Adapter, Black

### Optical Accessories

Cat. #	Description	Cat. #	Description
<b>T741</b>	Med. Pink Color Filter	<b>T7405</b>	Yellow Dichroic Lens
<b>T742</b>	Warm Red Color Filter	<b>T7406</b>	Magenta Dichroic Lens
<b>T743</b>	Daylight Blue Color Filter	<b>T7411</b>	Blue Green Dichroic Lens
<b>T744</b>	Med. Blue Color Filter	<b>T7416</b>	Daylight Blue Correction Lens
<b>T745</b>	Med. Amber Color Filter	<b>T7420</b>	Diffuse Spread Lens
<b>T746</b>	Med. Green Color Filter	<b>T7422</b>	UV Filter Lens
<b>T7401</b>	Red Dichroic Lens	<b>T7477</b>	Prismatic Lens
<b>T7403</b>	Med. Green Dichroic Lens	<b>T7478</b>	Linear Spread Lens
<b>T7404</b>	Med. Blue Dichroic Lens	<b>T7459BL</b>	Hexcell Louver

### Misc. Accessories

<b>CTA4N-125</b>	1 1/4" Thick Ceiling Adapter
<b>CTA4N-163</b>	1 5/8" Thick Ceiling Adapter
<b>CTA4N-200</b>	2" Thick Ceiling Adapter
<b>HB-1</b>	(2) Real Nail 3 Bar Hangers
<b>HB-26</b>	(2) 26" C-Channel Bar Hangers
<b>HB-50</b>	(2) 50" C-Channel Bar Hangers
<b>LB-27</b>	(2) 27" Linear Bar Hangers

To order, specify catalog number.



**PHOTOMETRIC REPORT**

Catalog Number: TC43N (439NC-WH)

Test Number: PT03101102

Total Luminaire Efficiency: 61.9%

Luminaire Spacing Criteria @ 90°: 0.65

Luminaire: Clear Alzak® finish, lensed angle cut wall wash trim.

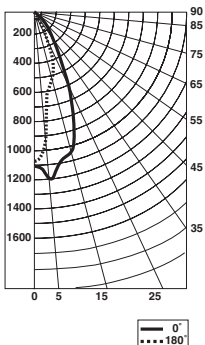
Lamps: One 50MR16/1R/FL35, rated at 1200 total lumens.

**Luminaire Data @ 180° Downlight**

Ang in Deg	Footlamberts	Candela/M <sup>2</sup>
45	2968	10169
55	0	0
65	0	0
75	0	0
85	0	0

**Zonal Lumen Summary**

Zone	Lumens	%Lamp	%Fixture
0-30°	512	42.6	68.9
0-40°	626	52.2	84.3
0-60°	727	60.6	97.9
0-90°	742	61.9	100.0
90-180°	0	0.0	0.0
0-180°	742	61.9	100.0



**Candlepower Distribution (Candelas)**

Degrees Vertical	0° Wall Wash	180° Downlight
0°	1075	1075
5°	1177	924
15°	998	506
25°	606	272
35°	270	112
45°	167	45
55°	77	0
65°	43	0
75°	14	0
85°	0	0

**Footcandles on Wall from Multiple Fixtures**

Fixture Distance to Wall Fixture Centers (spacing)	18"				24"							
	18"		24"		18"		24"					
1'	26	21	26	22	13	22	14	11	14	11	8	11
2'	38	34	38	30	24	30	27	26	27	21	19	21
3'	35	34	35	29	24	29	26	26	26	21	19	21
4'	34	31	34	25	24	25	27	26	27	20	20	20
5'	26	24	26	19	19	19	26	24	26	20	18	20
6'	19	19	19	14	14	14	22	22	22	17	16	17
7'	14	15	14	11	11	11	18	18	18	14	13	14
8'	11	12	11	9	9	9	14	15	14	11	11	11
9'	10	10	10	7	7	7	12	12	12	9	9	9

\*Multipliers: Gold - 0.9, Black - 0.7, Haze - 0.95

\*Note: Multipliers are provided for estimating purposes only.  
Use IES photometric files for precise photometric information.

**PHOTOMETRIC REPORT**

Catalog Number: TC43N (439NC-WH)

Test Number: PT03101103

Total Luminaire Efficiency: 63.4%

Luminaire Spacing Criteria @ 90°: 0.70

Luminaire: Clear Alzak® finish, lensed angle cut wall wash trim.

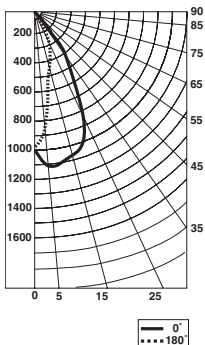
Lamps: One Q71MR16C/FL40, rated at 1200 total lumens.

**Luminaire Data @ 180° Downlight**

Ang in Deg	Footlamberts	Candela/M <sup>2</sup>
45	2326	7968
55	0	0
65	0	0
75	0	0
85	0	0

**Zonal Lumen Summary**

Zone	Lumens	%Lamp	%Fixture
0-30°	508	42.3	66.8
0-40°	648	54.0	85.2
0-60°	749	62.4	98.5
0-90°	761	63.4	100.0
90-180°	0	0.0	0.0
0-180°	761	63.4	100.0



**Candlepower Distribution (Candelas)**

Degrees Vertical	0° Wall Wash	180° Downlight
0°	965	965
5°	1068	865
15°	1038	445
25°	820	264
35°	387	85
45°	230	35
55°	63	0
65°	27	0
75°	12	0
85°	0	0

**Footcandles on Wall from Multiple Fixtures**

Fixture Distance to Wall Fixture Centers (spacing)	18"				24"							
	18"		24"		18"		24"					
1'	20	16	20	17	10	17	9	8	9	8	6	8
2'	49	48	49	39	33	39	30	27	30	25	19	25
3'	49	49	49	40	34	40	38	40	38	29	29	29
4'	38	37	38	29	28	29	37	37	37	28	28	28
5'	28	27	28	21	21	21	31	30	31	23	23	23
6'	20	20	20	15	15	15	25	24	25	19	18	19
7'	15	15	15	11	11	11	19	19	19	15	14	15
8'	12	12	12	9	9	9	15	15	15	12	11	12
9'	10	10	10	7	7	7	12	13	12	9	9	9

\*Multipliers: Gold - 0.9, Black - 0.7, Haze - 0.95

\*Note: Multipliers are provided for estimating purposes only.  
Use IES photometric files for precise photometric information.

