



## PRODUCT DESCRIPTION

Recessed MR16 downlight luminaire with 3 1/4" spread lens wall wash aperture and precision geared hot-aiming. Fixture has 50° visual cutoff to lamp and lamp image. Sealed Air-Loc housing ensures maximum energy savings and controls plenum sound transmission. Low profile non-IC housing is for use in non-insulated areas, or where insulation is spaced at least 3" from housing.

## PRODUCT SPECIFICATIONS

**Reflector** .040" aluminum angle-cut reflector provides 50° lamp and lamp image cut-off • Specular clear kicker reflector directs light toward wall surface • Reflector finishes include White Paint and Clear, Gold, Black, Haze or Wheat Haze Alzak.

**Trims Style** Trim Ring, Self Flanged and Flush Mount reflectors utilize torsion spring retention for tight, secure fit to ceiling • Trim ring features beveled knife edge for clean ceiling interface • Self Flanged reflectors with polished or optional white painted flange • For flush mount installations in drywall ceilings use the FMA4 flush mount adapter • For flush mount installations in wood, stone, or tile ceilings the FMA4-SC\*\*\* must be used (specify ceiling thickness and adapter finish).

**Lens** Lampholder accommodates up to three (3) 2" captive accessory lenses • Supplied with stippled clear uniformity lens.

**Socket** Ceramic bi-pin socket with double blade nickel alloy contacts • Quick disconnect for simplified maintenance.

**Lamp** One 75W MR16 lamp.

**Transformer** 120V High efficiency (>90%) dual tap magnetic, toroidal transformer has a boost tap to compensate for dimmer losses, improving color temperature and lumen output • Potted to eliminate noise and vibration • High efficiency (>94%), high power factor electronic transformer also available.

**Dimming** May be dimmed using dimmers specifically designed for low voltage magnetic or electronic transformers; consult factory or dimmer manufacturer for additional information.

**Codes/Labels** UL and cUL listed for through branch wiring, wet locations • Meets energy code Air Leakage requirements per ASTM E283 • Product thermally protected • Union made.

### Patented (US Patent 8,038,113) Pro-VI™ Bar Hanger System

With locking set screws, permits quick placement of housing within 24" O.C. joists or suspended ceilings • Robust bar eliminates flexing regardless of fixture position • Integral T-bar notch with locking tabs secures housing to suspended ceiling grid • Captive bugle-headed ring shank nail for quick one-step installation • Bar Hanger foot aligns to bottom of construction joist and breaks away for use in suspended ceilings.

**Junction Box** Rated for 8 No. 12 AWG 90° C through branch circuit conductors and includes (5) 1/2", (1) 3/4", and (4) Non-metallic sheathed cable knock-outs • Push-in electrical connectors for field connections.

**Housing/Mounting Frame** Black steel plaster frame and housing painted for visually dark interior • V-Notch in plaster frame aids fixture alignment during installation • Patent pending Tru-Line™ Adjustment Mechanism featuring +/- 1/2" translation aids fixture alignment after installation, prior to drywall.

**Ceiling Thickness** 1/2" – 7/8" ceiling standard • For thicker ceilings, order CTA4N-125 (7/8"-1 1/4"), CTA4N-163 (1 1/4"-1 5/8") or CTA4N-200 (1 5/8"-2") • CTA4N not required for wood, stone, or tile flush mount applications.

# RECESSED WALL WASH

## 3-1/4" LENSED WALL WASH

### Non-IC Rated, 75W MR16

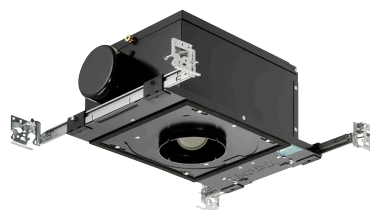
### TC43N, 439N TRIM

Project: \_\_\_\_\_

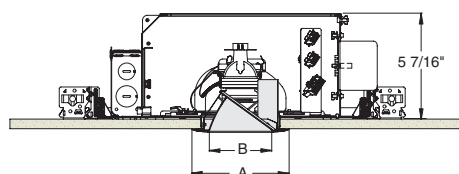
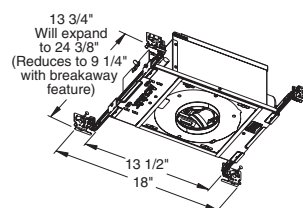
Fixture Type: \_\_\_\_\_

Location: \_\_\_\_\_

Contact/Phone: \_\_\_\_\_



## DIMENSIONS



4 1/4" CEILING CUTOUT  
(REFER TO INSTRUCTION SHEET FOR  
FLUSH MOUNT CEILING CUTOUT)

	A	B
Trim Ring	3 1/4"	5"
Self Flanged	3 3/8"	4 5/8"
Flush Mount	3 3/8"	3 7/8"

# RECESSED WALL WASH

## 3-1/4" LENSED WALL WASH

### Non-IC Rated, 75W MR16

## TC43N, 439N TRIM


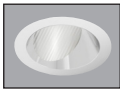

#### Ordering Information

Housing, trim and accessories each ordered separately

Example: **TC43N-E1**

Housing	Transformer	Options
<b>TC43N</b>	<b>Blank E1</b> 120V Magnetic 120V Electronic	<b>CP</b> Chicago Plenum

Example: **439NB-WH**

Trim/Description			
			
Trim Ring <sup>1</sup>	Self Flanged <sup>2</sup>	Flush Mount <sup>3</sup>	Description
<b>439NB-WH</b>	<b>439NB-SF</b>	<b>439NB-FM</b>	Black Haze Reflector
<b>439NC-WH</b>	<b>439NC-SF</b>	<b>439NC-FM</b>	Clear Reflector
<b>439NG-WH</b>	<b>439NG-SF</b>	<b>439NG-FM</b>	Gold Reflector
<b>439NW-WH</b>	<b>439NW-SF</b>	<b>439NW-FM</b>	White Painted Reflector
<b>439NHZ-SC</b>	-	-	Haze Reflector
<b>439NHZ-WH</b>	<b>439NHZ-SF</b>	<b>439NHZ-FM</b>	Haze Reflector, White Trim
<b>439NWHZ-ABZ</b>	-	-	Wheat Haze Reflector
<b>439NWHZ-WH</b>	<b>439NWHZ-SF</b>	<b>439NWHZ-FM</b>	Wheat Haze Reflector, White Trim

<sup>1</sup>Trim Ring Finish: ABZ - Classic Aged Bronze, SC - Satin Chrome, WH - White.

<sup>2</sup>For self flanged reflector with optional white painted flange, replace "SF" suffix with "SFWH".

<sup>3</sup>Flush Mount trims must be used with Flush Mount Adapter, ordered separately.

Product specifications subject to change without notice.

#### Flush Mount Adapters

<b>FMA4</b>	Drywall Ceiling Adapter
<b>FMA4-SC087-WH</b>	Wood, Stone, Tile, 1/2"-7/8" Thick Ceiling, Adapter, White
<b>FMA4-SC087-BL</b>	Wood, Stone, Tile, 1/2"-7/8" Thick Ceiling, Adapter, Black
<b>FMA4-SC125-WH</b>	Wood, Stone, Tile, 7/8"-1 1/4" Thick Ceiling, Adapter, White
<b>FMA4-SC125-BL</b>	Wood, Stone, Tile, 7/8"-1 1/4" Thick Ceiling, Adapter, Black
<b>FMA4-SC163-WH</b>	Wood, Stone, Tile, 1 1/4"-1 5/8" Thick Ceiling, Adapter, White
<b>FMA4-SC163-BL</b>	Wood, Stone, Tile, 1 1/4"-1 5/8" Thick Ceiling, Adapter, Black

#### Optical Accessories

Cat. #	Description	Cat. #	Description
<b>T741</b>	Med. Pink Color Filter	<b>T7405</b>	Yellow Dichroic Lens
<b>T742</b>	Warm Red Color Filter	<b>T7406</b>	Magenta Dichroic Lens
<b>T743</b>	Daylight Blue Color Filter	<b>T7411</b>	Blue Green Dichroic Lens
<b>T744</b>	Med. Blue Color Filter	<b>T7416</b>	Daylight Blue Correction Lens
<b>T745</b>	Med. Amber Color Filter	<b>T7420</b>	Diffuse Spread Lens
<b>T746</b>	Med. Green Color Filter	<b>T7422</b>	UV Filter Lens
<b>T7401</b>	Red Dichroic Lens	<b>T7477</b>	Prismatic Lens
<b>T7403</b>	Med. Green Dichroic Lens	<b>T7478</b>	Linear Spread Lens
<b>T7404</b>	Med. Blue Dichroic Lens	<b>T7459BL</b>	Hexcell Louver

#### Misc. Accessories

<b>CTA4N-125</b>	1 1/4" Thick Ceiling Adapter
<b>CTA4N-163</b>	1 5/8" Thick Ceiling Adapter
<b>CTA4N-200</b>	2" Thick Ceiling Adapter

To order, specify catalog number.



1300 S. Wolf Road • Des Plaines, IL 60018 • Phone (847) 827-9880 • Fax (847) 827-2925  
 220 Chrysler Drive • Brampton, Ontario • Canada L6S 6B6 • Phone (905) 792-7335 • Fax (905) 792-0064  
 Visit us at [www.junolightinggroup.com](http://www.junolightinggroup.com)

Printed in U.S.A. ©2013 Juno Lighting, LLC.

**PHOTOMETRIC REPORT**

Catalog Number: TC43N (439NC-WH)

Test Number: PT03101102

Total Luminaire Efficiency: 61.9%

Luminaire Spacing Criteria @ 90°: 0.65

Luminaire: Clear Alzak® finish, lensed angle cut wall wash trim.

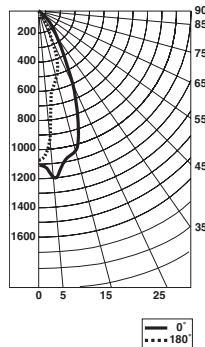
Lamps: One 50MR16/1R/FL35, rated at 1200 total lumens.

**Luminance Data @ 180° Downlight**

Ang in Deg	Footlamberts	Candela/M <sup>2</sup>
45	2968	10169
55	0	0
65	0	0
75	0	0
85	0	0

**Zonal Lumen Summary**

Zone	Lumens	%Lamp	%Fixture
0-30°	512	42.6	68.9
0-40°	626	52.2	84.3
0-60°	727	60.6	97.9
0-90°	742	61.9	100.0
90-180°	0	0.0	0.0
0-180°	742	61.9	100.0

**Candlepower Distribution (Candelas)**

Degrees Vertical	0° Wall Wash	180° Downlight
0°	1075	1075
5°	1177	924
15°	998	506
25°	606	272
35°	270	112
45°	167	45
55°	77	0
65°	43	0
75°	14	0
85°	0	0

**Footcandles on Wall from Multiple Fixtures**

Fixture Distance to Wall Fixture Centers (spacing)	18"				24"			
	18"		24"		18"		24"	
1'	26	21	26	22	13	11	14	11
2'	38	34	38	30	27	26	27	21
3'	35	34	35	29	24	26	26	21
4'	34	31	34	25	24	25	27	20
5'	26	24	26	19	19	19	26	20
6'	19	19	19	14	14	14	22	17
7'	14	15	14	11	11	11	18	14
8'	11	12	11	9	9	9	14	11
9'	10	10	10	7	7	7	12	9

\*Multipliers: Gold - 0.9, Black - 0.7, Haze - 0.95

\*Note: Multipliers are provided for estimating purposes only.

Use IES photometric files for precise photometric information.

**PHOTOMETRIC REPORT**

Catalog Number: TC43N (439NC-WH)

Test Number: PT03101103

Total Luminaire Efficiency: 63.4%

Luminaire Spacing Criteria @ 90°: 0.70

Luminaire: Clear Alzak® finish, lensed angle cut wall wash trim.

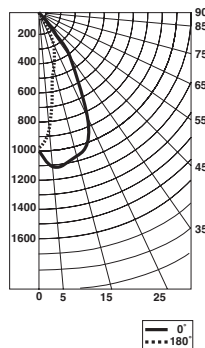
Lamps: One Q71MR16C/FL40, rated at 1200 total lumens.

**Luminance Data @ 180° Downlight**

Ang in Deg	Footlamberts	Candela/M <sup>2</sup>
45	2326	7968
55	0	0
65	0	0
75	0	0
85	0	0

**Zonal Lumen Summary**

Zone	Lumens	%Lamp	%Fixture
0-30°	508	42.3	66.8
0-40°	648	54.0	85.2
0-60°	749	62.4	98.5
0-90°	761	63.4	100.0
90-180°	0	0.0	0.0
0-180°	761	63.4	100.0

**Candlepower Distribution (Candelas)**

Degrees Vertical	0° Wall Wash	180° Downlight
0°	965	965
5°	1068	865
15°	1038	445
25°	820	264
35°	387	85
45°	230	35
55°	63	0
65°	27	0
75°	12	0
85°	0	0

**Footcandles on Wall from Multiple Fixtures**

Fixture Distance to Wall Fixture Centers (spacing)	18"				24"			
	18"		24"		18"		24"	
1'	20	16	20	17	10	8	9	8
2'	49	48	49	39	33	30	27	25
3'	49	49	49	40	34	40	38	29
4'	38	37	38	29	28	29	37	28
5'	28	27	28	21	21	21	31	23
6'	20	20	20	15	15	15	25	19
7'	15	15	15	11	11	11	19	15
8'	12	12	12	9	9	9	15	12
9'	10	10	10	7	7	7	12	9

\*Multipliers: Gold - 0.9, Black - 0.7, Haze - 0.95

\*Note: Multipliers are provided for estimating purposes only.

Use IES photometric files for precise photometric information.