



LED RECESSED DOWNLIGHT

3-1/4" BAFFLED APERTURE



Non-IC Rated, 1000 LUMEN

TC49L-434N, TC949L-434N

PRODUCT DESCRIPTION

Recessed downlight 20W LED luminaire with 3-1/4" angle cut baffled aperture produces up to 1000 fixture lumens (depending on trim) and approximates the performance of a 75W MR16 lamp. Fixture has 50° visual cutoff and features precision geared hot-aiming. Sealed Air-Loc® housing ensures maximum energy savings and controls plenum sound transmission. Low profile Non-IC rated housing for use in non-insulated areas or where insulation is spaced at least 3" from housing.

PRODUCT SPECIFICATIONS

LED Light Engine Consistent fixture to fixture color consistency within 3-step MacAdam ellipse • 2700K, 3000K, 3500K, or 4000K color temperatures are available with 85 CRI typical • 3000K also available with 93 CRI typical and R9 >80.

Modular Optics Available with 12° Spot, 24° Narrow Flood, or 35° Flood field interchangeable optics • 50° distribution is available when AF3-50DEG accessory lens is used with 12° Spot optic • Patent pending auto-adjusting optic holder maximizes luminaire efficiency by maintaining optimal LED optic position • Accommodates up to three (3) additional beam control lenses and/or filters.

Baffle Grooved deep aluminum baffle available in white or black.

Trims Style Utilizes torsion spring retention for tight, secure fit to ceiling • Trim ring features beveled knife edge for clean ceiling interface.

LED Driver Choice of four drivers to accommodate voltages from 120-277 volts AC • Dedicated 120V (-1) driver is dimmable with most incandescent, magnetic low voltage, and electronic low voltage dimmers • Universal Voltage (-U) driver is dimmable with most 0-10V protocol dimmers • Lutron Hi-Lume® A Series 3-wire (-L) driver is dimmable with 3-wire fluorescent controls and compatible with EcoSystem® • Lutron Hi-Lume® A Series 2-wire (-D) driver is dimmable with 2-wire forward phase dimmers containing a neutral wire • For a list of compatible dimmers, refer to [ACLXLED-DIM](#) • Power Factor > 0.9 • Field replaceable from below or above ceiling.

Life Rated for 50,000 hrs at 70% lumen maintenance.

Warranty 5 years from date of purchase on LED components • Standard Juno Lighting Group product guarantee terms and conditions apply.

Codes/Labels UL and cUL listed for through branch wiring, damp locations • Meets energy code Air Leakage requirements per ASTM E283 • ENERGY STAR® Qualified with select trims • Union made.

Mounting TC49L features Patented (US Patent 8,038,113) Pro-VI™ Bar Hanger System with locking set screws, permitting quick placement of housing within 24" O.C. joists or suspended ceilings • Robust bar eliminates flexing regardless of fixture position • Integral T-bar notch with locking tabs secures housing to suspended ceiling grid • Captive bugle-headed ring shank nail for quick one-step installation • Bar Hanger foot aligns to bottom of construction joist and breaks away for use in suspended ceilings.

TC949L is equipped with vertically adjustable mounting brackets that accept 1/2" conduit, "C" channels (HB-26 or HB-50), linear flat bars (LB-27) or 26" telescoping Real Nail bar hangers (HB-1).

Junction Box Rated for 8 No. 12 AWG 90° C through branch circuit conductors and includes (6) 1/2", (1) 3/4", and (4) Non-metallic sheathed cable knock-outs • Push-in electrical connectors for field connections.

Housing/Mounting Frame Black steel plaster frame and housing painted for visually dark interior • V-Notch in plaster frame and Patented (US Patent 8,277,090) Tru-Line™ Platform featuring +/- 1/2" translation aids fixture alignment after installation, prior to drywall.

Ceiling Thickness 1/2" - 7/8" ceiling standard • For thicker ceilings, order CTA4N-125 (7/8"-1 1/4"), CTA4N-163 (1 1/4"-1 5/8") or CTA4N-200 (1 5/8" - 2").

Project: _____

Fixture Type: _____

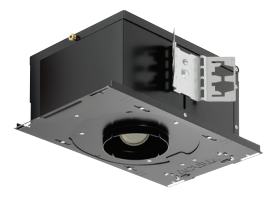
Location: _____

Contact/Phone: _____

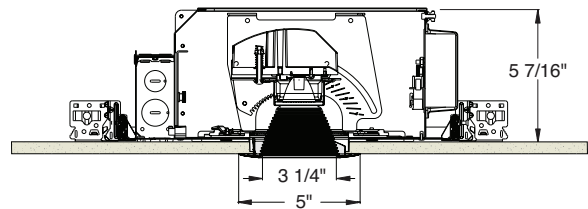
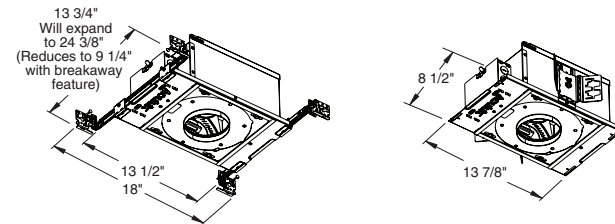
TC49L



TC949L



DIMENSIONS



4 1/4" CEILING CUTOUT

ELECTRICAL DATA

Driver Option	Dedicated 120V (-1)	Universal Voltage (-U)		Lutron 3-wire (-L)		Lutron 2-wire (-D)
Voltage	120	120	277	120	277	120
Input Power	18.7	20.6	22.1	19.7	21.1	20.0
Input Current	0.16	0.17	0.08	0.16	0.08	0.17
Frequency	50/60Hz	50/60Hz		50/60Hz		50/60Hz
Power Factor	0.98	0.99	0.90	0.99	0.94	0.98

LED RECESSED DOWNLIGHT

3-1/4" BAFFLED APERTURE

Non-IC Rated, 1000 LUMEN

TC49L-434N, TC949L-434N

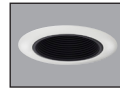
Ordering Information Housing, trim and accessories each ordered separately

Example: **TC49L-830-N-U**

Housings	CRI/Color Temperature	Beam Optics	Drivers	Options
TC49L	827 2700K, 85CRI	S 12° Spot	1 120V, Forward & Reverse Phase Dimming	CP Chicago Plenum
TC949L	830 3000K, 85CRI	N 24° Narrow Flood		
	835 3500K, 85CRI	F 35° Flood	U 120-277V, 0-10V Dimming	
	840 4000K, 85CRI		L 120-277V, Lutron Hi-Lume 3-wire Dimming, Ecosystem Compatible	
	930* 3000K, 93CRI		D 120V, Lutron Hi-Lume 2-wire Dimming	

Example: **434NB-WH**

Trim/Description



Trim Ring	Description
434NB-WH*	Black Baffle, White Ring
434NB-ABZ*	Black Baffle, Aged Bronze Ring
434NB-SC*	Black Baffle, Satin Chrome Ring
434NW-WH	White Baffle, White Ring

Trim Ring Finish: ABZ - Classic Aged Bronze, SC - Satin Chrome, WH - White.

*Not ENERGY STAR® Qualified.

Product specifications subject to change without notice.

Optical Accessories

Cat. #	Description	Cat. #	Description
TIR-1-SP	12° Spot Optic	T7403	Med. Green Dichroic Lens
TIR-1-NFL	24° Narrow Flood Optic	T7404	Med. Blue Dichroic Lens
TIR-1-FL	35° Flood Optic	T7405	Yellow Dichroic Lens
AF3-50DEG	50° Optic Film (Use with 12° Optic)	T7406	Magenta Dichroic Lens
T741	Med. Pink Color Filter	T7411	Blue Green Dichroic Lens
T742	Warm Red Color Filter	T7416	Daylight Blue Correction Lens
T743	Daylight Blue Color Filter	T7420	Diffuse Spread Lens
T744	Med. Blue Color Filter	T7422	UV Filter Lens
T745	Med. Amber Color Filter	T7477	Prismatic Lens
T746	Med. Green Color Filter	T7478	Linear Spread Lens
T7401	Red Dichroic Lens	T7459BL	Hexcell Louver

Misc. Accessories

Cat. #	Description
CTA4N-125	1 1/4" Thick Ceiling Adapter
CTA4N-163	1 5/8" Thick Ceiling Adapter
CTA4N-200	2" Thick Ceiling Adapter
HB-1	(2) Real Nail 3 Bar Hangers
HB-26	(2) 26" C-Channel Bar Hangers
HB-50	(2) 50" C-Channel Bar Hangers
LB-27	(2) 27" Linear Bar Hangers
EMI-20	20W Emergency Lighting Inverter

To order, specify catalog number.



LED RECESSED DOWNLIGHT

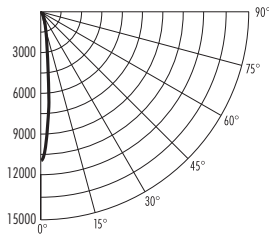
3-1/4" BAFFLED APERTURE

Non-IC Rated, 1000 LUMEN

TC49L-434N, TC949L-434N

PHOTOMETRIC REPORT

Test Report #: PT05121501
 Catalog No: TC49L-830-S-U
 with 434NW-WH Trim
 Luminaire Spacing Criterion: 0.24
 Luminaire LPW: 43.8



CANDLEPOWER DISTRIBUTION (Candelas)

Degrees Vertical	0°
0	11902
5	7156
15	532
25	55
35	16
45	6
55	4
65	0
75	0
85	0
90	0

AVERAGE INITIAL FOOTCANDLES

Multiple Units (Square Array, 60'x60' room)
 Ceiling 80% Wall 50% Floor 20%

Spacing	RCR1	RCR3	RCR5
4.0'	62	59	56
5.0'	40	38	36
6.0'	28	26	25
7.0'	22	21	20
8.0'	18	17	16
9.0'	14	13	12
10.0'	10	9	9

INITIAL FOOTCANDLES (One Unit, 20.0W, 11.8° Beam)

Distance to Illuminated Plane (Feet)	Footcandles Beam Center	Beam Diameter
6	330.6	1.2'
8	186.0	1.7'
10	119.0	2.1'
12	82.7	2.5'

ZONAL LUMEN SUMMARY

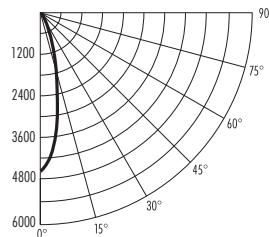
Zone	Lumens	%Fixture
0-30°	857	97.8
0-40°	868	99.0
0-60°	876	99.9
0-90°	877	100.0

LUMINANCE (Average cd/m²)

Degrees	Average Luminance
45	1487
55	1375
65	0
75	0
85	0

PHOTOMETRIC REPORT

Test Report #: PT05121606
 Catalog No: TC49L-830-N-U
 with 434NW-WH Trim
 Luminaire Spacing Criterion: 0.4
 Luminaire LPW: 45.0



CANDLEPOWER DISTRIBUTION (Candelas)

Degrees Vertical	0°
0	4705
5	4196
15	1404
25	169
35	21
45	6
55	4
65	1
75	0
85	0
90	0

AVERAGE INITIAL FOOTCANDLES

Multiple Units (Square Array, 60'x60' room)
 Ceiling 80% Wall 50% Floor 20%

Spacing	RCR1	RCR3	RCR5
4.0'	63	58	55
5.0'	41	37	35
6.0'	28	26	24
7.0'	23	21	20
8.0'	18	17	16
9.0'	14	13	12
10.0'	10	9	9

INITIAL FOOTCANDLES (One Unit, 20.0W, 24.0° Beam)

Distance to Illuminated Plane (Feet)	Footcandles Beam Center	Beam Diameter
6	130.7	2.6'
8	73.5	3.4'
10	47.1	4.3'
12	32.7	5.1'

ZONAL LUMEN SUMMARY

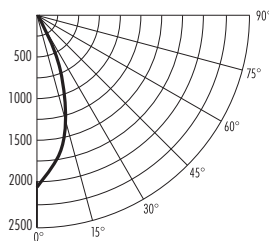
Zone	Lumens	%Fixture
0-30°	870	96.8
0-40°	889	98.9
0-60°	897	99.8
0-90°	899	100.0

LUMINANCE (Average cd/m²)

Degrees	Average Luminance
45	1281
55	1184
65	536
75	0
85	0

PHOTOMETRIC REPORT

Test Report #: PT05121705
 Catalog No: TC49L-830-F-U
 with 434NW-WH Trim
 Luminaire Spacing Criterion: 0.65
 Luminaire LPW: 47.1



CANDLEPOWER DISTRIBUTION (Candelas)

Degrees Vertical	0°
0	2023
5	1926
15	1441
25	647
35	62
45	6
55	4
65	3
75	0
85	0
90	0

AVERAGE INITIAL FOOTCANDLES

Multiple Units (Square Array, 60'x60' room)
 Ceiling 80% Wall 50% Floor 20%

Spacing	RCR1	RCR3	RCR5
4.0'	66	59	54
5.0'	42	38	34
6.0'	29	26	24
7.0'	24	21	19
8.0'	19	17	15
9.0'	14	13	12
10.0'	11	9	9

INITIAL FOOTCANDLES (One Unit, 20.0W, 40.5° Beam)

Distance to Illuminated Plane (Feet)	Footcandles Beam Center	Beam Diameter
4	126.4	3.0'
6	56.2	4.4'
8	31.6	5.9'
10	20.2	7.4'

ZONAL LUMEN SUMMARY

Zone	Lumens	%Fixture
0-30°	866	92.0
0-40°	928	98.7
0-60°	939	99.8
0-90°	941	100.0

LUMINANCE (Average cd/m²)

Degrees	Average Luminance
45	1281
55	1184
65	1072
75	0
85	0

Fixtures tested to IES recommended standard for solid state lighting per LM-79-08. Photometric performance on a single unit represents a baseline of performance for the fixture. Results may vary in the field.

Multipliers: 827 - 0.92
 930 - 0.92
 835 - 1.01
 840 - 1.02



1300 S. Wolf Road • Des Plaines, IL 60018 • Phone (847) 827-9880 • Fax (847) 827-2925
 220 Chrysler Drive • Brampton, Ontario • Canada L6S 6B6 • Phone (905) 792-7335 • Fax (905) 792-0064
 Visit us at www.junolightinggroup.com