

ACULUX 3 1/4" RECESSED LED REMODEL HOUSING INSTALLATION INSTRUCTIONS

WARNING: For your safety, read and understand instructions completely before starting installation. Before wiring to power supply, turn off electricity at fuse or circuit breaker box.

NOTE: Aculux recessed fixtures are designed to meet the latest NEC requirements and are listed in full compliance with the relevant UL standards. Before attempting installation of any recessed lighting fixture, check your local electrical building code. This code sets the wiring and installation requirements for your locality and should be understood before starting your work. Use of non-Aculux trims voids warranty.

TYPE TC for Non-Insulated Ceilings

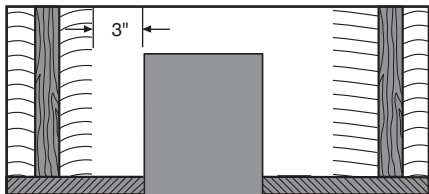


Fig. 1

Aculux "TC" fixtures (type non-IC) are designed for installations where the housing and J-Box will not come into contact with insulation*. Insulation and combustible materials must be spaced at least 3" away from the housing and J-Box.

*In Canada, when insulation is present, Type IC fixtures must be used.

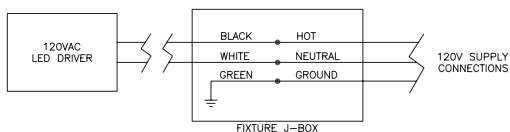
Dimming Compatibility and Wiring

Only use dimmers compatible with the electronic LED driver. Contact JLG Product Services or refer to www.junolightinggroup.com/Aculux-Gen2-LEDDimmerCompatibility.pdf for a list of Juno Lighting Group recommended dimmer model numbers.

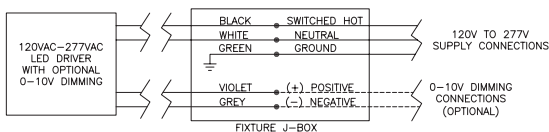
TC43LR-XXX-X-1: 120VAC input housings.

Dimmable with the use of most incandescent, magnetic low voltage, or electronic low voltage dimmers (Note: electronic low voltage dimmers require a neutral wire connection at the dimmer.)

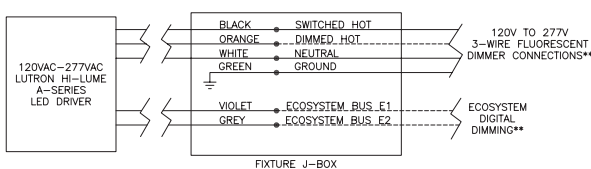
TC43LR-XXX-X-D: 120VAC input housings with Lutron® Hi-Lume® A-Series driver for use with Lutron® approved forward phase controls. (Note: These controls require a neutral wire connection at the dimmer.)



TC43LR-XXX-X-U: Universal input voltage (120VAC thru 277VAC) housings. Optional dimming with the use of most 0-10V dimmers.



TC43LR-XXX-X-L: Universal input voltage (120VAC thru 277VAC) housings with Lutron® Hi-Lume® A-Series driver for use with Lutron® approved 3-wire fluorescent dimmers or Ecosystem digital controls.



**NOTE: CHOOSE EITHER 3-WIRE FLUORESCENT OR ECOSYSTEM DIMMING (ONE OF THESE DIMMING OPTIONS IS REQUIRED). LEAVE ORANGE WIRE OR VIOLET/GRAY WIRES CAPPED ACCORDINGLY.

Installation Steps

Aculux LED remodel fixtures are compatible with ceilings made from various materials with a maximum thickness of 2". The fixtures are designed to fit in ceiling cavities with a minimum height of 5-1/2" and a minimum width of 6". Power supply connections to the fixture must be flexible and extend at least 6" past the finished ceiling surface.

1. Determine desired location for fixture, and cut an accurate 4-3/8" diameter hole. (Note: A 4-3/8" hole saw is recommended to achieve the best results. Oversized holes will not allow the fixture to correctly seat against the finished ceiling.)
2. Bring the flexible power supply through the hole, and make connections as outlined in the "Electrical Connection Instructions" section of this sheet.
3. Two cables are secured to sides of plaster frame. Be sure these cables are fed through slots in the sides of housing as shown in figure 2. Insert the housing through the hole in ceiling, junction box side in first.
4. Place plaster frame on upper surface of ceiling, and align the four tabs with ceiling hole. Grasp connected cables with one hand and press housing through plaster frame opening with other hand as shown in figure 3.
5. When the housing flange is seated tightly against the ceiling, remove sticker from joined cables. Unhook, and tuck excess into slots from which they originated as shown in figure 4.

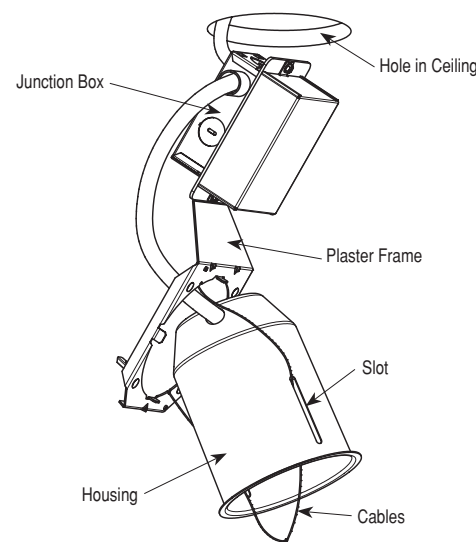


Fig. 2

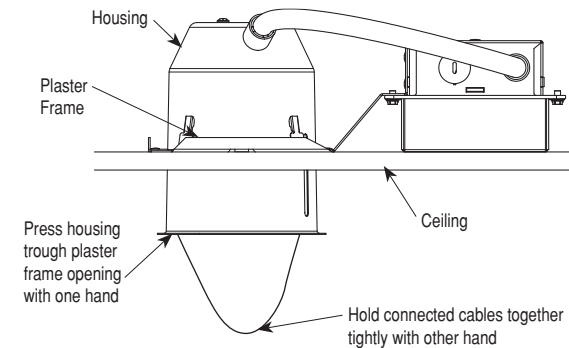


Fig. 3

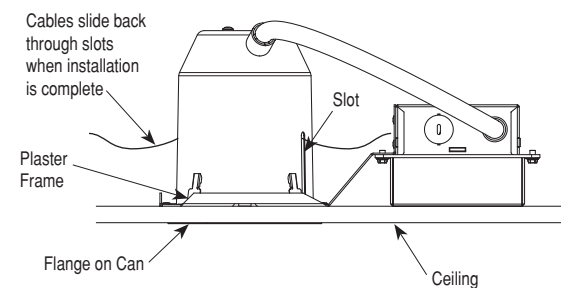


Fig. 4

Electrical Connection Instructions

Aculux LED remodel fixtures contain an integral junction box pre-wired with UL Listed push-in style wire connectors for connection to the branch circuit supply and ground conductors. These push-in wire connectors allow up to two 12AWG or 14AWG solid copper wires to be connected to each fixture lead and ground.

1. Route branch circuit supply and ground according to your local electrical code through the ceiling cutout. (Note: A flexible supply with conductors rated at least 90°C is required.)
2. Remove the junction box cover from the fixture, and attach the electrical service as follows:
 - a. Flexible metal conduit: Remove appropriate round knockout(s) and connect flexible conduit to junction box with proper fittings (supplied by others).
 - b. 12/2 or 14/2 non-metallic sheathed cable (type NM-B): Remove appropriate knock-out(s) from top of junction box and insert cable, pushing it past the cable grip (Additional connectors are not required).
 - c. 12/3 or 14/3 non-metallic sheathed cable (type NM-B): Remove appropriate round knockout(s) and connect cable to junction box with proper fittings (supplied by others).
3. Strip 3/8" insulation from the branch-circuit supply and ground wires, and insert into the corresponding push-in wire connector as shown in the corresponding wiring diagram.
4. Place all wiring and connections in junction box and replace cover.

ACULUX 3 1/4" RECESSED LED REMODEL HOUSING INSTALLATION INSTRUCTIONS

Precision Aiming

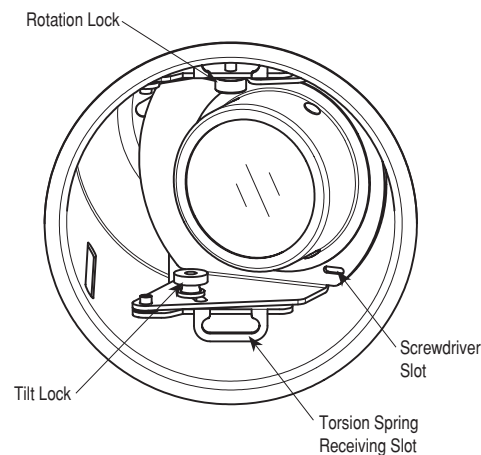
Aculux LED remodel housings feature lockable 370° rotation and 35° tilt. **To adjust aiming angle:**

1. Using a standard flat-blade screwdriver or your hand, rotate and/or tilt the adjustment mechanism until the desired aiming position is achieved (see fig. 5).
2. Tighten the tilt and rotation locks to preserve position.

Installing Finishing Trims

Aculux trims contain high-grade constant tension wire-form springs that keep the trims flush to the finished ceiling, improving flatness and eliminating possible light leak. To install the finishing trims into the housings:

1. Compress springs and insert into the corresponding slots, which are located about 1-1/4" deep in the housing. (see fig. 5)
2. Push trim upwards, until the springs pull trim tight to the ceiling.



BOTTOM VIEW

Fig. 5

Lens and Optic Installation and Replacement

Aculux LED remodel housings contain a patent-pending lens holder that accepts up to (2) standard 2" light control or color control accessories without sacrificing performance or optimum light position.

To install lens (refer to fig. 6):

1. Twist to unlock outer lens holder (A) and remove.
2. Place lenses (B) into outer lens holder.
3. Line up the springs of lens holder (C) with cutouts (D) in housing. Press upward until seated and twist to lock into place.

Aculux LED housings are shipped with an optic which provides the beam spread specified at the time of purchase. However, this optic can be replaced if a different beam spread is desired.

To replace optic (refer to fig. 6):

1. Remove the outer lens holder (A) as described in Step 1 above.
2. Unscrew threaded bezel (E) from inner optic housing (F) and remove optic (G).
3. Insert new optic into inner optic housing.
4. Reinstall threaded bezel onto inner optic housing.
5. Replace outer lens holder with any accessory lenses as described in Step 3 above.

LED Replacement

The LED can be removed from the housing to change color temperature or be replaced. Before servicing, disconnect or switch off electrical supply to fixture. Failure to do so can result in electrical shock and/or injury.

To Remove LED (refer to fig. 6):

1. Remove lens holder (A) and optional lenses (B), threaded bezel (E), and optic (G) as described in Lens and Optic Installation and Replacement section.
2. Loosen and remove screws (J) that secure LED connector (K).
3. Remove LED (L).

To Install LED (refer to fig. 6):

1. Position connector frame (M) on heat sink. (Note: alignment of connector frame to heat sink is controlled by small posts on the back of connector frame.)
2. Position LED (L) and thermal interface material (N) into connector frame (M) with notched corners aligned with angled corner of connector frame.
3. Secure with connector (K) and screws (J).
4. Reinstall optic (G), bezel (E), and lens holder (A) with any optional lenses.

Accessing Electrical Connections & Driver

Accessing the junction box and LED driver requires removal of the fixture from the ceiling. To remove the fixture:

1. Pull down on housing of fixture until it is completely released from springs on plaster frame.
2. Bring plaster frame assembly through ceiling cutout as shown in figure 2.
3. Open junction box to access LED driver and wiring by lifting the cover retention spring.

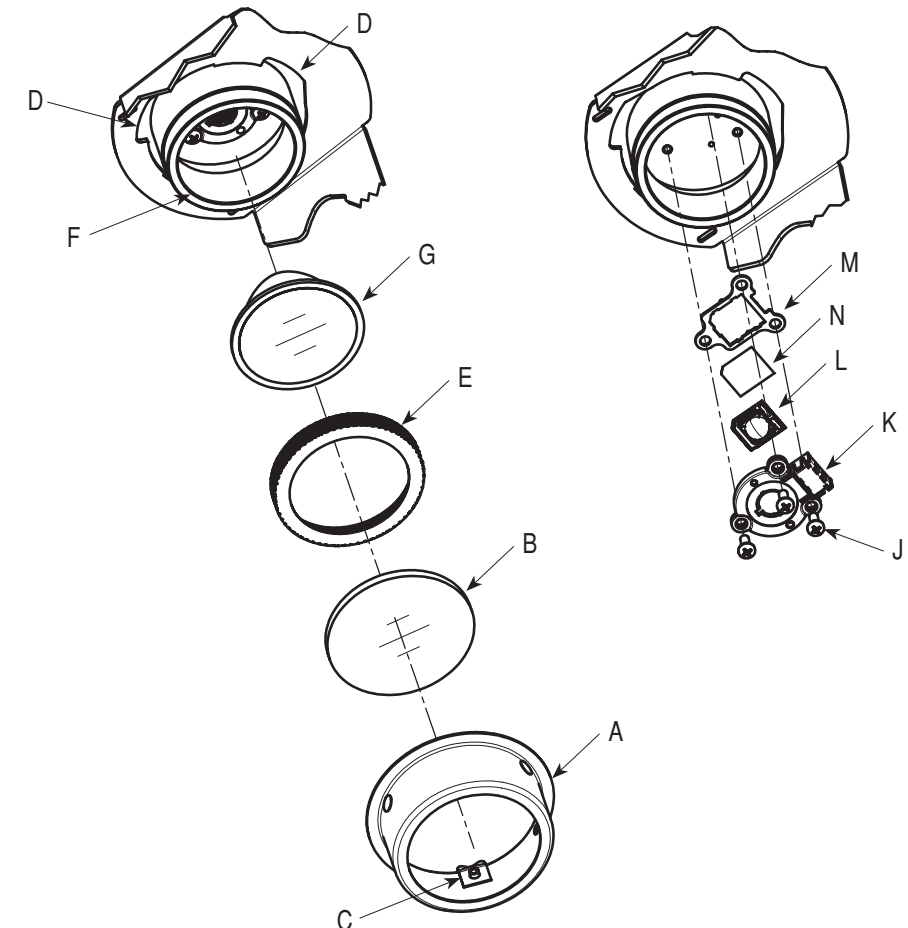


Fig. 6

WARRANTY

Juno Lighting Group provides five year limited warranty on LED components from date of purchase. Juno Lighting Group's obligation is expressly limited to repair or replacement, without charge, at Juno Lighting Group's factory after prior written return authorization has been granted. This warranty shall not apply to products which have been altered or repaired outside of Juno Lighting Group's factory. This warranty is in lieu of all other warranties, expressed or implied, and without limiting the generality of the foregoing phrase, excludes any implied warranty of merchantability. Also, there are no warranties which extend beyond the description of the product on the company's literature setting forth terms of sale.