

PRODUCT DESCRIPTION

Recessed lensed wall wash 20W LED luminaire produces up to 750 fixture lumens exceeding the performance of a 75W MR16 halogen lamp. Fixture has 50° visual cutoff and features precision geared hot-aiming. Sealed Air-Loc® housing ensures maximum energy savings and controls plenum sound transmission. IC rated housing for use in insulated or non-insulated areas.

PRODUCT SPECIFICATIONS

LED Light Engine Consistent fixture to fixture color consistency within 3-step MacAdam ellipse • 2700K, 3000K, 3500K, or 4000K color temperatures are available with 85 CRI typical • 3000K also available with 93 CRI typical and R9 >80.

Modular Optics Available with 12° Spot, 24° Narrow Flood, or 35° Flood field interchangeable optics • Patent pending auto-adjusting optic holder maximizes luminaire efficiency by maintaining optimal LED optic position • Accommodates up to three (3) additional beam control lenses and/or filters.

Reflector .040" aluminum angle-cut reflector provides 50° lamp and lamp image cut-off • Specular clear kicker reflector directs light toward wall surface • Reflector finishes include White Paint and Clear, Gold, Black, Haze or Wheat Haze Alzak.

Trims Style Trim Ring, Self Flanged and Flush Mount reflectors utilize torsion spring retention for tight, secure fit to ceiling • Trim ring features beveled knife edge for clean ceiling interface • Self Flanged reflectors with polished or optional white painted flange • For flush mount installations in drywall ceilings use the FMA4 flush mount adapter • For flush mount installations in wood, stone, or tile ceilings the FMA4-SC*** must be used (specify ceiling thickness and adapter finish).

LED Driver Choice of four drivers to accommodate voltages from 120-277 volts AC • Dedicated 120V (-I) driver is dimmable with most incandescent, magnetic low voltage, and electronic low voltage dimmers • Universal Voltage (-U) driver is dimmable with most 0-10V protocol dimmers • Lutron Hi-Lume® A Series 3-wire (-L) driver is dimmable with 3-wire fluorescent controls and compatible with EcoSystem® • Lutron Hi-Lume® A Series 2-wire (-D) driver is dimmable with 2-wire forward phase dimmers containing a neutral wire • For a list of compatible dimmers, refer to [ACLXLED-DIM](#) • Power Factor > 0.9 • Field replaceable from below or above ceiling.

Life Rated for 50,000 hrs at 70% lumen maintenance.

Warranty 5 years from date of purchase on LED components • Standard Juno Lighting Group product guarantee terms and conditions apply.

Codes/Labels UL and cUL listed for through branch wiring, wet locations • Meets energy code Air Leakage requirements per ASTM E283 • Union made.

Mounting Features Patented (US Patent 8,038,113) Pro-VI™ Bar Hanger System with locking set screws, permitting quick placement of housing within 24" O.C. joists or suspended ceilings • Robust bar eliminates flexing regardless of fixture position • Integral T-bar notch with locking tabs secures housing to suspended ceiling grid • Captive bugle-headed ring shank nail for quick one-step installation • Bar Hanger foot aligns to bottom of construction joist and breaks away for use in suspended ceilings.

Junction Box Rated for 4 No. 12 AWG 90° C through branch circuit conductors and includes (6) ½", (1) ¾", and (4) Non-metallic sheathed cable knock-outs • Push-in electrical connectors for field connections.

Housing/Mounting Frame Black steel plaster frame and housing painted for visually dark interior • V-Notch in plaster frame and Patented (US Patent 8,277,090) Tru-Line™ Platform featuring +/- ½" translation aids fixture alignment during installation, prior to drywall.

Ceiling Thickness 1/2" – 7/8" ceiling standard • For thicker ceilings, order CTA4N-125 (7/8"-1 1/4"), CTA4N-163 (1 1/4"-1 5/8") or CTA4N-200 (1 5/8"-2") • CTA4N not required for wood, stone, or tile flush mount applications.

LED RECESSED WALL WASH

3-1/4" LENSED WALL WASH



IC Rated, 1000 LUMEN

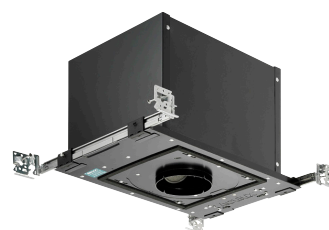
IC49L-439N

Project: _____

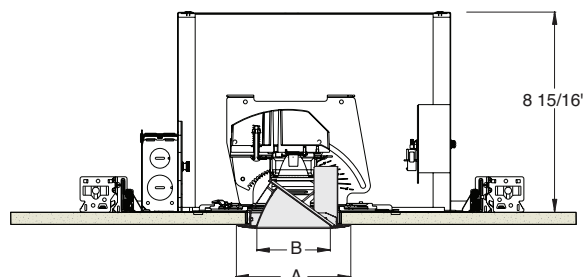
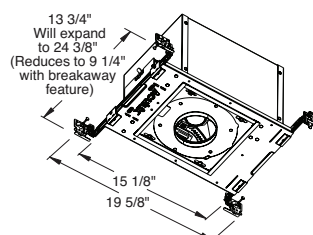
Fixture Type: _____

Location: _____

Contact/Phone: _____



DIMENSIONS



4 1/4" CEILING CUTOUT
(REFER TO INSTRUCTION SHEET FOR
FLUSH MOUNT CEILING CUTOUT)

	A	B
Trim Ring	3 1/4"	5"
Self Flanged	3 3/8"	4 5/8"
Flush Mount	3 3/8"	3 7/8"

ELECTRICAL DATA

Driver Option	Dedicated 120V (-I)	Universal Voltage (-U)	Lutron 3-wire (-L)	Lutron 2-wire (-D)
Voltage	120	120 277	120 277	120
Input Power	18.7	20.6 22.1	19.7 21.1	20.0
Input Current	0.16	0.17 0.08	0.16 0.08	0.17
Frequency	50/60Hz	50/60Hz	50/60Hz	50/60Hz
Power Factor	0.98	0.99 0.90	0.99 0.94	0.98

LED RECESSED WALL WASH

3-1/4" LENSED WALL WASH

IC Rated, 1000 LUMEN

IC49L-439N


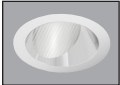
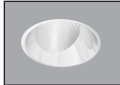
Ordering Information

Housing, trim and accessories each ordered separately

Example: **IC49L-830-N-U**

Housings	CRI/Color Temperature	Beam Optics	Drivers
IC49L	827 2700K, 85CRI	S 12° Spot	I 120V, Forward & Reverse Phase Dimming
	830 3000K, 85CRI	N 24° Narrow Flood	
	835 3500K, 85CRI	F 35° Flood	U 120-277V, 0-10V Dimming
	840 4000K, 85CRI		L 120-277V, Lutron Hi-Lume 3-wire Dimming, Ecosystem Compatible
	930 3000K, 93CRI		D 120V, Lutron Hi-Lume 2-wire Dimming

Example: **439NC-WH**

Trim/Description			
			
Trim Ring ¹	Self Flanged ²	Flush Mount ³	Description
439NB-WH	439NB-SF	439NB-FM	Black Haze Reflector
439NC-WH	439NC-SF	439NC-FM	Clear Reflector
439NG-WH	439NG-SF	439NG-FM	Gold Reflector
439NW-WH	439NW-SF	439NW-FM	White Painted Reflector
439NHZ-SC	-	-	Haze Reflector
439NHZ-WH	439NHZ-SF	439NHZ-FM	Haze Reflector, White Ring
439NWHZ-ABZ	-	-	Wheat Haze Reflector
439NWHZ-WH	439NWHZ-SF	439NWHZ-FM	Wheat Haze Reflector, White Ring

¹Trim Ring Finish: ABZ - Classic Aged Bronze, SC - Satin Chrome, WH - White.²For self flanged reflector with optional white painted flange, replace "SF" suffix with "SF~~WH~~".³Flush Mount trims must be used with Flush Mount Adapter, ordered separately.

Product specifications subject to change without notice.

Flush Mount Adapters

Cat. #	Description
FMA4	Drywall Ceiling Adapter
FMA4-SC087-WH	Wood, Stone, Tile, 1/2"-7/8" Thick Ceiling, Adapter, White
FMA4-SC087-BL	Wood, Stone, Tile, 1/2"-7/8" Thick Ceiling, Adapter, Black
FMA4-SC125-WH	Wood, Stone, Tile, 7/8"-1 1/4" Thick Ceiling, Adapter, White
FMA4-SC125-BL	Wood, Stone, Tile, 7/8"-1 1/4" Thick Ceiling, Adapter, Black
FMA4-SC163-WH	Wood, Stone, Tile, 1 1/4"-1 5/8" Thick Ceiling, Adapter, White
FMA4-SC163-BL	Wood, Stone, Tile, 1 1/4"-1 5/8" Thick Ceiling, Adapter, Black

Optical Accessories

Cat. #	Description	Cat. #	Description
TIR-1-SP	12° Spot Optic	T7403	Med. Green Dichroic Lens
TIR-1-NFL	24° Narrow Flood Optic	T7404	Med. Blue Dichroic Lens
TIR-1-FL	35° Flood Optic	T7405	Yellow Dichroic Lens
AF3-50DEG	50° Optic Film (Use with 12° Optic)	T7406	Magenta Dichroic Lens
T741	Med. Pink Color Filter	T7411	Blue Green Dichroic Lens
T742	Warm Red Color Filter	T7416	Daylight Blue Correction Lens
T743	Daylight Blue Color Filter	T7420	Diffuse Spread Lens
T744	Med. Blue Color Filter	T7422	UV Filter Lens
T745	Med. Amber Color Filter	T7477	Prismatic Lens
T746	Med. Green Color Filter	T7478	Linear Spread Lens
T7401	Red Dichroic Lens	T7459BL	Hexcell Louver

Misc. Accessories

Cat. #	Description
CTA4N-125	1 1/4" Thick Ceiling Adapter
CTA4N-163	1 5/8" Thick Ceiling Adapter
CTA4N-200	2" Thick Ceiling Adapter
HB-1	(2) Real Nail 3 Bar Hangers
HB-26	(2) 26" C-Channel Bar Hangers
HB-50	(2) 50" C-Channel Bar Hangers
LB-27	(2) 27" Linear Bar Hangers
EMI-20	20W Emergency Lighting Inverter

To order, specify catalog number.



1300 S. Wolf Road • Des Plaines, IL 60018 • Phone (847) 827-9880 • Fax (847) 827-2925
 220 Chrysler Drive • Brampton, Ontario • Canada L6S 6B6 • Phone (905) 792-7335 • Fax (905) 792-0064
 Visit us at www.junolightinggroup.com

Printed in U.S.A. ©2014 Juno Lighting, LLC.

LED RECESSED WALL WASH

3-1/4" LENSED WALL WASH

IC Rated, 1000 LUMEN

IC49L-439N

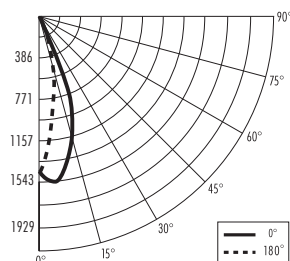
PHOTOMETRIC REPORT

Test Report #: PT06120401

Catalog No: IC49L-830-N-U
with 439NC-WH Trim

Luminaire Spacing Criterion @ 90°: 0.60

Luminaire: 3-1/4" IC LED Downlight with Clear
Alzak®, Lensed Angle Cut Wall Wash Trim



CANDLEPOWER DISTRIBUTION (Candelas)

Degrees Vertical	0° Wall Wash	180° Downlight
0	1433	1433
5	1543	1080
10	1444	770
15	1225	537
20	911	364
25	603	244
30	398	162
35	241	106
40	125	62
45	71	27
50	41	3
55	25	0
60	16	0
65	11	0
70	10	0
75	7	0
80	0	0
85	0	0
90	0	0

ZONAL LUMEN SUMMARY

Zone	Lumens	%Fixture
0 - 30°	571	75.6
0 - 40°	692	91.6
0 - 60°	751	99.4
0 - 90°	756	100.0
90 - 180°	0	0.0
0 - 180°	756	100.0

LUMINANCE (Average cd/m²)

Degrees	Average 180° Downlight Luminance
45	7166
55	0
65	0
75	0
85	0

FOOTCANDLES ON WALL FROM MULTIPLE FIXTURES

Fixture Distance to Wall		18"			24"		
Fixture Centers (spacing)		18"			24"		
DISTANCE FROM CEILING	1'	10	8	10	8	6	8
	2'	28	25	28	22	17	22
	3'	37	37	37	29	28	29
	4'	35	35	35	28	26	28
	5'	28	28	28	22	22	22
	6'	21	21	21	17	17	17
	7'	15	15	15	12	12	12
	8'	12	12	12	10	10	10
	9'	10	10	10	8	8	8

Multipliers: 827 - 0.92
930 - 0.92
835 - 1.01
840 - 1.02