

PRODUCT DESCRIPTION

Recessed downlight 20W LED luminaire with 3 1/4" open cone reflector produces up to 1000 fixture lumens exceeding the performance of a 75W MR16 halogen lamp. Fixture has 50° visual cutoff and features precision geared hot-aiming. Sealed Air-Loc® housing ensures maximum energy savings and controls plenum sound transmission. IC rated housing for use in insulated or non-insulated areas.

PRODUCT SPECIFICATIONS

LED Light Engine Consistent fixture to fixture color consistency within 3-step MacAdam ellipse • 2700K, 3000K, 3500K, or 4000K color temperatures are available with 85 CRI typical • 3000K also available with 93 CRI typical and R9 >80.

Modular Optics Available with 12° Spot, 24° Narrow Flood, or 35° Flood field interchangeable optics • 50° distribution is available when AF3-50DEG accessory lens is used with 12° Spot optic • Patent pending auto-adjusting optic holder maximizes luminaire efficiency by maintaining optimal LED optic position • Accommodates up to three (3) additional beam control lenses and/or filters.

Reflector .040" aluminum parabolic reflector in clear, gold, black, haze, or wheat haze Alzak finish provides 50° lamp and lamp image cut-off.

Trims Style Trim Ring, Self Flanged and Flush Mount reflectors utilize torsion spring retention for tight, secure fit to ceiling • Trim ring features beveled knife edge for clean ceiling interface • Self Flanged reflectors with polished or optional white painted flange • For flush mount installations in drywall ceilings use the FMA4 flush mount adapter • For flush mount installations in wood, stone, or tile ceilings the FMA4-SC*** must be used (specify ceiling thickness and adapter finish).

LED Driver Choice of four drivers to accommodate voltages from 120-277 volts AC • Dedicated 120V (-I) driver is dimmable with most incandescent, magnetic low voltage, and electronic low voltage dimmers • Universal Voltage (-U) driver is dimmable with most 0-10V protocol dimmers • Lutron Hi-Lume® A Series 3-wire (-L) driver is dimmable with 3-wire fluorescent controls and compatible with EcoSystem® • Lutron Hi-Lume® A Series 2-wire (-D) driver is dimmable with 2-wire forward phase dimmers containing a neutral wire • For a list of compatible dimmers, refer to [ACLXLED-DIM](#) • Power Factor > 0.9 • Field replaceable from below or above ceiling.

Life Rated for 50,000 hrs at 70% lumen maintenance.

Warranty 5 years from date of purchase on LED components • Standard Juno Lighting Group product guarantee terms and conditions apply.

Codes/Labels UL and cUL listed for through branch wiring, damp locations • Meets energy code Air Leakage requirements per ASTM E283 • ENERGY STAR® Qualified with select trims • Union made.

Mounting Features Patented (US Patent 8,038,113) Pro-VI™ Bar Hanger System with locking set screws, permitting quick placement of housing within 24" O.C. joists or suspended ceilings • Robust bar eliminates flexing regardless of fixture position • Integral T-bar notch with locking tabs secures housing to suspended ceiling grid • Captive bugle-headed ring shank nail for quick one-step installation • Bar Hanger foot aligns to bottom of construction joist and breaks away for use in suspended ceilings.

Junction Box Rated for 4 No. 12 AWG 90° C through branch circuit conductors and includes (6) 1/2", (1) 3/4", and (4) Non-metallic sheathed cable knock-outs • Push-in electrical connectors for field connections.

Housing/Mounting Frame Black steel plaster frame and housing painted for visually dark interior • V-Notch in plaster frame and Patented (US Patent 8,277,090) Tru-Line™ Platform featuring +/- 1/2" translation aids fixture alignment after installation, prior to drywall.

Ceiling Thickness 1/2" – 7/8" ceiling standard • For thicker ceilings, order CTA4N-125 (7/8"-1 1/4"), CTA4N-163 (1 1/4"-1 5/8") or CTA4N-200 (1 5/8"-2") • CTA4N not required for wood, stone, or tile flush mount applications.

LED RECESSED DOWNLIGHT

3-1/4" OPEN APERTURE



IC Rated, 1000 LUMEN

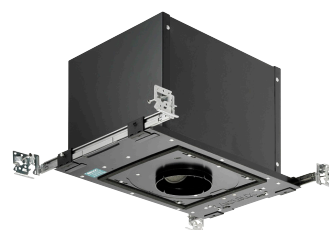
IC49L-437N

Project: _____

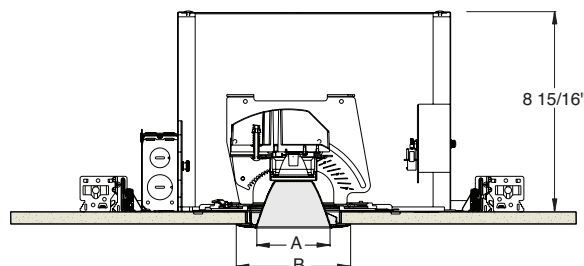
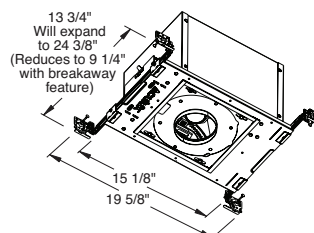
Fixture Type: _____

Location: _____

Contact/Phone: _____



DIMENSIONS



4 1/4" CEILING CUTOUT
(REFER TO INSTRUCTION SHEET FOR
FLUSH MOUNT CEILING CUTOUT)

	A	B
Trim Ring	3 1/4"	5"
Self Flanged	3 3/8"	4 5/8"
Flush Mount	3 3/8"	3 7/8"

ELECTRICAL DATA

Driver Option	Dedicated 120V (-I)	Universal Voltage (-U)	Lutron 3-wire (-L)	Lutron 2-wire (-D)
Voltage	120	120 277	120 277	120
Input Power	18.7	20.6 22.1	19.7 21.1	20.0
Input Current	0.16	0.17 0.08	0.16 0.08	0.17
Frequency	50/60Hz	50/60Hz	50/60Hz	50/60Hz
Power Factor	0.98	0.99 0.90	0.99 0.94	0.98

LED RECESSED DOWNLIGHT

3-1/4" OPEN APERTURE

IC Rated, 1000 LUMEN

IC49L-437N




Ordering Information

Housing, trim and accessories each ordered separately

Example: **IC49L-830-N-U**

Housings	CRI/Color Temperature	Beam Optics	Drivers
IC49L	827 2700K, 85CRI	S 12° Spot	I 120V, Forward & Reverse Phase Dimming
	830 3000K, 85CRI	N 24° Narrow Flood	
	835 3500K, 85CRI	F 35° Flood	U 120-277V, 0-10V Dimming
	840 4000K, 85CRI		L 120-277V, Lutron Hi-Lume 3-wire Dimming, Ecosystem Compatible
	930* 3000K, 93CRI		D 120V, Lutron Hi-Lume 2-wire Dimming

Example: **437NC-WH**

Trim/Description			
			
Trim Ring ¹	Self Flanged ²	Flush Mount ³	Description
437NB-WH*	437NB-SF*	437NB-FM*	Black Cone, White Ring
437NB-ABZ*	-	-	Black Cone
437NB-SC*	-	-	Black Cone
437NC-WH	437NC-SF	437NC-FM	Clear Cone
437NG-WH	437NG-SF	437NG-FM	Gold Cone
437NHZ-SC	-	-	Haze Cone
437NHZ-WH	437NHZ-SF	437NHZ-FM	Haze Cone, White Ring
437NWHZ-ABZ	-	-	Wheat Haze Cone
437NWHZ-WH	437NWHZ-SF	437NWHZ-FM	Wheat Haze Cone, White Ring

¹Trim Ring Finish: ABZ - Classic Aged Bronze, SC - Satin Chrome, WH - White.²For self flanged reflector with optional white painted flange, replace "SF" suffix with "SF_{FWH}".³Flush Mount trims must be used with Flush Mount Adapter, ordered separately.

*Not ENERGY STAR® Qualified.

Product specifications subject to change without notice.

Flush Mount Adapters

Cat. #	Description
FMA4	Drywall Ceiling Adapter
FMA4-SC087-WH	Wood, Stone, Tile, 1/2"-7/8" Thick Ceiling, Adapter, White
FMA4-SC087-BL	Wood, Stone, Tile, 1/2"-7/8" Thick Ceiling, Adapter, Black
FMA4-SC125-WH	Wood, Stone, Tile, 7/8"-1 1/4" Thick Ceiling, Adapter, White
FMA4-SC125-BL	Wood, Stone, Tile, 7/8"-1 1/4" Thick Ceiling, Adapter, Black
FMA4-SC163-WH	Wood, Stone, Tile, 1 1/4"-1 5/8" Thick Ceiling, Adapter, White
FMA4-SC163-BL	Wood, Stone, Tile, 1 1/4"-1 5/8" Thick Ceiling, Adapter, Black

Optical Accessories

Cat. #	Description	Cat. #	Description
TIR-1-SP	12° Spot Optic	T7403	Med. Green Dichroic Lens
TIR-1-NFL	24° Narrow Flood Optic	T7404	Med. Blue Dichroic Lens
TIR-1-FL	35° Flood Optic	T7405	Yellow Dichroic Lens
AF3-50DEG	50° Optic Film (Use with 12° Optic)	T7406	Magenta Dichroic Lens
T741	Med. Pink Color Filter	T7411	Blue Green Dichroic Lens
T742	Warm Red Color Filter	T7416	Daylight Blue Correction Lens
T743	Daylight Blue Color Filter	T7420	Diffuse Spread Lens
T744	Med. Blue Color Filter	T7422	UV Filter Lens
T745	Med. Amber Color Filter	T7477	Prismatic Lens
T746	Med. Green Color Filter	T7478	Linear Spread Lens
T7401	Red Dichroic Lens	T7459BL	Hexcell Louver

Misc. Accessories

Cat. #	Description
CTA4N-125	1 1/4" Thick Ceiling Adapter
CTA4N-163	1 5/8" Thick Ceiling Adapter
CTA4N-200	2" Thick Ceiling Adapter
HB-1	(2) Real Nail 3 Bar Hangers
HB-26	(2) 26" C-Channel Bar Hangers
HB-50	(2) 50" C-Channel Bar Hangers
LB-27	(2) 27" Linear Bar Hangers
EMI-20	20W Emergency Lighting Inverter

To order, specify catalog number.



1300 S. Wolf Road • Des Plaines, IL 60018 • Phone (847) 827-9880 • Fax (847) 827-2925
 220 Chrysler Drive • Brampton, Ontario • Canada L6S 6B6 • Phone (905) 792-7335 • Fax (905) 792-0064
 Visit us at www.junolightinggroup.com

Printed in U.S.A. ©2014 Juno Lighting, LLC.

LED RECESSED DOWNLIGHT

3-1/4" OPEN APERTURE

IC Rated, 1000 LUMEN

IC49L-437N

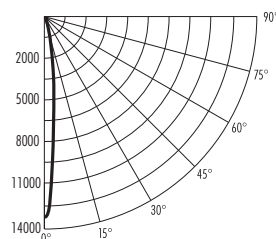
PHOTOMETRIC REPORT

Test Report #: PT05121401

Catalog No: IC49L-830-S-U
with 437NC-WH Trim

Luminaire Spacing Criterion: 0.22

Luminaire LPW: 44.0



CANDLEPOWER DISTRIBUTION (Candelas)

Degrees Vertical	0°
0	13334
5	7436
15	558
25	57
35	15
45	0
55	0
65	0
75	0
85	0
90	0

AVERAGE INITIAL FOOTCANDLES

Multiple Units (Square Array, 60'x60' room)

Ceiling 80% Wall 50% Floor 20%

Spacing	RCR1	RCR3	RCR5
4.0'	63	59	56
5.0'	40	38	36
6.0'	28	26	25
7.0'	23	21	20
8.0'	18	17	16
9.0'	14	13	12
10.0'	10	9	9

ZONAL LUMEN SUMMARY

Zone	Lumens	%Fixture
0-30°	870	98.9
0-40°	879	100.0
0-60°	880	100.0
0-90°	880	100.0

INITIAL FOOTCANDLES

(One Unit, 20.0W, 11.3° Beam)

Distance to Illuminated Plane (Feet)	Footcandles Beam Center	Beam Diameter
6	370.4	1.2'
8	208.3	1.6'
10	133.3	2.0'
12	92.6	2.4'

LUMINANCE (Average cd/m²)

Degrees	Average Luminance
45	0
55	0
65	0
75	0
85	0

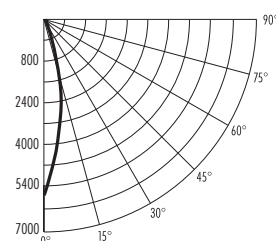
PHOTOMETRIC REPORT

Test Report #: PT05121605

Catalog No: IC49L-830-N-U
with 437NC-WH Trim

Luminaire Spacing Criterion: 0.34

Luminaire LPW: 46.1



CANDLEPOWER DISTRIBUTION (Candelas)

Degrees Vertical	0°
0	5864
5	4363
15	1424
25	170
35	20
45	0
55	0
65	0
75	0
85	0
90	0

AVERAGE INITIAL FOOTCANDLES

Multiple Units (Square Array, 60'x60' room)

Ceiling 80% Wall 50% Floor 20%

Spacing	RCR1	RCR3	RCR5
4.0'	65	60	56
5.0'	42	39	36
6.0'	29	27	25
7.0'	23	22	20
8.0'	19	17	16
9.0'	14	13	12
10.0'	10	10	9

ZONAL LUMEN SUMMARY

Zone	Lumens	%Fixture
0-30°	902	97.9
0-40°	920	99.9
0-60°	921	100.0
0-90°	921	100.0

INITIAL FOOTCANDLES

(One Unit, 20.0W, 21.0° Beam)

Distance to Illuminated Plane (Feet)	Footcandles Beam Center	Beam Diameter
6	162.9	2.2'
8	91.6	3.0'
10	58.6	3.7'
12	40.7	4.4'

LUMINANCE (Average cd/m²)

Degrees	Average Luminance
45	0
55	0
65	0
75	0
85	0

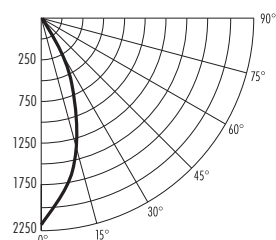
PHOTOMETRIC REPORT

Test Report #: PT05121703

Catalog No: IC49L-830-F-U
with 437NHZ-WH Trim

Luminaire Spacing Criterion: 0.62

Luminaire LPW: 47.8



CANDLEPOWER DISTRIBUTION (Candelas)

Degrees Vertical	0°
0	2212
5	1985
15	1477
25	657
35	65
45	0
55	0
65	0
75	0
85	0
90	0

AVERAGE INITIAL FOOTCANDLES

Multiple Units (Square Array, 60'x60' room)

Ceiling 80% Wall 50% Floor 20%

Spacing	RCR1	RCR3	RCR5
4.0'	67	60	54
5.0'	43	39	35
6.0'	30	27	24
7.0'	24	22	20
8.0'	19	17	15
9.0'	15	13	12
10.0'	11	10	9

ZONAL LUMEN SUMMARY

Zone	Lumens	%Fixture
0-30°	887	92.9
0-40°	951	99.7
0-60°	955	100.0
0-90°	955	100.0

INITIAL FOOTCANDLES

(One Unit, 20.0W, 37.7° Beam)

Distance to Illuminated Plane (Feet)	Footcandles Beam Center	Beam Diameter
4	61.4	4.1'
6	34.6	5.5'
8	22.1	6.8'
10	15.4	8.2'

LUMINANCE (Average cd/m²)

Degrees	Average Luminance
45	0
55	0
65	0
75	0
85	0

Fixtures tested to IES recommended standard for solid state lighting per LM-79-08. Photometric performance on a single unit represents a baseline of performance for the fixture. Results may vary in the field.

Multipliers:
827 - 0.92
930 - 0.92
835 - 1.01
840 - 1.02



1300 S. Wolf Road • Des Plaines, IL 60018 • Phone (847) 827-9880 • Fax (847) 827-2925
220 Chrysler Drive • Brampton, Ontario • Canada L6S 6B6 • Phone (905) 792-7335 • Fax (905) 792-0064
Visit us at www.junolightinggroup.com

Printed in U.S.A. ©2014 Juno Lighting, LLC.