



LED RECESSED DOWNLIGHT

1-1/4" SQUARE LENSED
PINHOLE APERTURE



IC Rated, 700 LUMEN

IC43LSQ-4332SQ, IC943LSQ-4332SQ

PRODUCT DESCRIPTION

Recessed downlight 13W LED luminaire with 1-1/4" square lensed pinhole produces up to 500 fixture lumens and approximates the performance of a 50W MR16 lamp. Fixture has 50° visual cutoff and features precision geared hot-aiming. Sealed Air-Loc® housing ensures maximum energy savings and controls plenum sound transmission. Low profile IC rated housing for use in insulated or non-insulated areas.

PRODUCT SPECIFICATIONS

LED Light Engine Consistent fixture to fixture color consistency within 3-step MacAdam ellipse • 2700K, 3000K, 3500K, or 4000K color temperatures are available with 85 CRI typical • 3000K also available with 93 CRI typical and R9 >80.

Modular Optics Available with 12° Spot, 24° Narrow Flood, or 35° Flood field interchangeable optics • 50° distribution is available when AF3-50DEG accessory lens is used with 12° Spot optic • Patent pending auto-adjusting optic holder maximizes luminaire efficiency by maintaining optimal LED optic position • Accommodates up to three (3) additional beam control lenses and/or filters.

Reflector .040" aluminum parabolic reflector in black Alzak finish shields lighting interior.

Trims Style Die cast Self Flanged and Flush Mount trims utilize precision wound double torsion springs for tight, secure fit to ceiling • Features solite glass lens on aperture • For flush mount installations in drywall ceilings use the FMASQ4 flush mount adapter • For flush mount installations in wood, stone, or tile ceilings the FMASQ4-SC*** must be used (specify ceiling thickness and adapter finish).

LED Driver Choice of four drivers to accommodate voltages from 120-277 volts AC • Dedicated 120V (-1) driver is dimmable with most incandescent, magnetic low voltage, and electronic low voltage dimmers • Universal Voltage (-U) driver is dimmable with most 0-10V protocol dimmers • Lutron Hi-Lume® A Series 3-wire (-L) driver is dimmable with 3-wire fluorescent controls and compatible with EcoSystem® • Lutron Hi-Lume® A Series 2-wire (-D) driver is dimmable with 2-wire forward phase dimmers containing a neutral wire • For a list of compatible dimmers, refer to ACLXLED-DIM • Power Factor > 0.9 • Field replaceable from below or above ceiling.

Life Rated for 50,000 hrs at 70% lumen maintenance.

Warranty 5 years from date of purchase on LED components • Standard Juno Lighting Group product guarantee terms and conditions apply.

Codes/Labels UL and cUL listed for through branch wiring, wet locations • Meets energy code Air Leakage requirements per ASTM E283 • Union made.

Mounting IC43LSQ features Patented (US Patent 8,038,113) Pro-V™ Bar Hanger System with locking set screws, permitting quick placement of housing within 24" O.C. joists or suspended ceilings • Robust bar eliminates flexing regardless of fixture position • Integral T-bar notch with locking tabs secures housing to suspended ceiling grid • Captive bugle-headed ring shank nail for quick one-step installation • Bar Hanger foot aligns to bottom of construction joist and breaks away for use in suspended ceilings.

IC943LSQ is equipped with vertically adjustable mounting brackets that accept 1/2" conduit, "C" channels (HB-26 or HB-50), linear flat bars (LB-27) or 26" telescoping Real Nail bar hangers (HB-1).

Junction Box Rated for 4 No. 12 AWG 90° C through branch circuit conductors and includes (6) 1/2", (1) 3/4", and (4) Non-metallic sheathed cable knock-outs • Push-in electrical connectors for field connections.

Housing/Mounting Frame Black steel plaster frame and housing painted for visually dark interior • V-Notch in plaster frame and Patented (US Patent 8,277,090) Tru-Line™ Platform featuring +/- 1/2" translation and +/- 45° aperture rotation aids fixture alignment during installation.

Ceiling Thickness 1/2" - 7/8" ceiling standard • For thicker ceilings, order CTA4SQ-125 (7/8"-1 1/4"), CTA4SQ-163 (1 1/4"-1 5/8") or CTA4SQ-200 (1 5/8" - 2") • CTA4SQ not required for wood, stone, or tile flush mount applications.

Project: _____

Fixture Type: _____

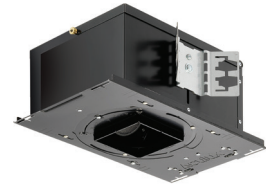
Location: _____

Contact/Phone: _____

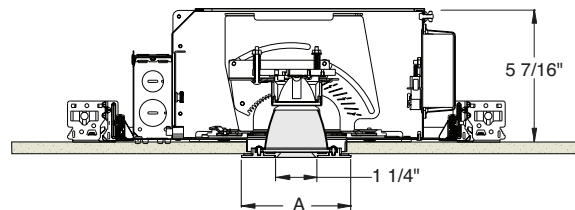
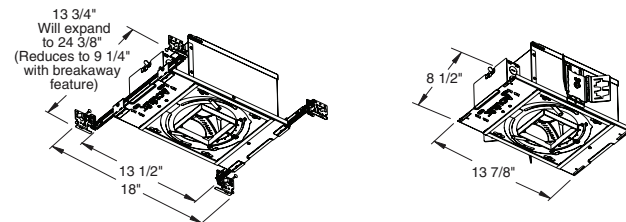
IC43LSQ



IC943LSQ



DIMENSIONS



4 1/8" CEILING CUTOUT
(REFER TO INSTRUCTION SHEET FOR
FLUSH MOUNT CEILING CUTOUT)

	A
Self Flanged	4 1/2"
Flush Mount	3 5/8"

ELECTRICAL DATA

Driver Option	Dedicated 120V (-1)	Universal Voltage (-U)		Lutron 3-wire (-L)	Lutron 2-wire (-D)
Voltage	120	120	277	120 277	120
Input Power	12.8	13.7	14.1	12.6 13.6	13.5
Input Current	0.10	0.11	0.05	0.10 0.05	0.11
Frequency	50/60Hz	50/60Hz		50/60Hz	50/60Hz
Power Factor	0.99	0.99	0.90	0.99 0.94	0.98

LED RECESSED DOWNLIGHT

1-1/4" SQUARE LENSED PINHOLE APERTURE
IC Rated, 700 LUMEN

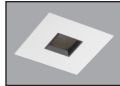

IC43LSQ-4332SQ, IC943LSQ-4332SQ

Ordering Information Housing, trim and accessories each ordered separately

Example: **IC43LSQ-835-F-1**

Housings	CRI/Color Temperature	Beam Optics	Drivers	Options
IC43LSQ	827 2700K, 85CRI	S 12° Spot	I 120V, Forward & Reverse Phase Dimming	CP Chicago Plenum
IC943LSQ	830 3000K, 85CRI	N 24° Narrow Flood		
	835 3500K, 85CRI	F 35° Flood	U 120-277V, 0-10V Dimming	
	840 4000K, 85CRI		L 120-277V, Lutron Hi-Lume 3-wire Dimming, Ecosystem Compatible	
	930 3000K, 93CRI		D 120V, Lutron Hi-Lume 2-wire Dimming	

Example: **4332SQ-WH**

Trim/Description		
		
Self Flanged	Flush Mount¹	Description
4332SQ-WH	4332SQ-WH-FM	White Trim
4332SQ-BL	4332SQ-BL-FM	Black Trim

¹Flush Mount trims must be used with Flush Mount Adapter, ordered separately.
Product specifications subject to change without notice.

Flush Mount Adapters

Cat. #	Description
FMASQ4	Drywall Ceiling Adapter
FMASQ4-SC100-WH	Wood, Stone, Tile, 1/2"-1" Thick Ceiling, Adapter, White
FMASQ4-SC100-BL	Wood, Stone, Tile, 1/2"-1" Thick Ceiling, Adapter, Black
FMASQ4-SC138-WH	Wood, Stone, Tile, 1"-1 3/8" Thick Ceiling, Adapter, White
FMASQ4-SC138-BL	Wood, Stone, Tile, 1"-1 3/8" Thick Ceiling, Adapter, Black
FMASQ4-SC175-WH	Wood, Stone, Tile, 1 3/8"-1 3/4" Thick Ceiling, Adapter, White
FMASQ4-SC175-BL	Wood, Stone, Tile, 1 3/8"-1 3/4" Thick Ceiling, Adapter, Black

Optical Accessories

Cat. #	Description	Cat. #	Description
TIR-1-SP	12° Spot Optic	T7403	Med. Green Dichroic Lens
TIR-1-NFL	24° Narrow Flood Optic	T7404	Med. Blue Dichroic Lens
TIR-1-FL	35° Flood Optic	T7405	Yellow Dichroic Lens
AF3-50DEG	50° Optic Film (Use with 12° Optic)	T7406	Magenta Dichroic Lens
T741	Med. Pink Color Filter	T7411	Blue Green Dichroic Lens
T742	Warm Red Color Filter	T7416	Daylight Blue Correction Lens
T743	Daylight Blue Color Filter	T7420	Diffuse Spread Lens
T744	Med. Blue Color Filter	T7422	UV Filter Lens
T745	Med. Amber Color Filter	T7477	Prismatic Lens
T746	Med. Green Color Filter	T7478	Linear Spread Lens
T7401	Red Dichroic Lens	T7459BL	Hexcell Louver

Misc. Accessories

Cat. #	Description
CTA45Q-125	1 1/4" Thick Ceiling Adapter
CTA45Q-163	1 5/8" Thick Ceiling Adapter
CTA45Q-200	2" Thick Ceiling Adapter
HB-1	(2) Real Nail 3 Bar Hangers
HB-26	(2) 26" C-Channel Bar Hangers
HB-50	(2) 50" C-Channel Bar Hangers
LB-27	(2) 27" Linear Bar Hangers
EMI-20	20W Emergency Lighting Inverter

To order, specify catalog number.



LED RECESSED DOWNLIGHT

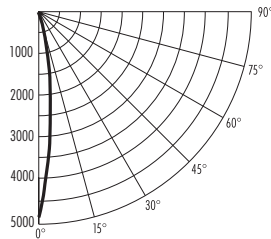
1-1/4" SQUARE LENSED PINHOLE APERTURE

IC Rated, 700 LUMEN

IC43LSQ-4332SQ, IC943LSQ-4332SQ

PHOTOMETRIC REPORT

Test Report #: PTO5122402
 Catalog No: IC43LSQ-830-S-1
 with 4332SQ-WH Trim
 Luminaire Spacing Criterion: 0.29
 Luminaire LPW: 38.2



CANDLEPOWER DISTRIBUTION (Candelas)

Degrees Vertical	0°
0	4885
5	3443
15	502
25	35
35	3
45	0
55	0
65	0
75	0
85	0
90	0
Multipliers:	827 - 0.92 930 - 0.92 835 - 1.01 840 - 1.02

AVERAGE INITIAL FOOTCANDLES

Multiple Units (Square Array, 60'x60' room)
 Ceiling 80% Wall 50% Floor 20%

Spacing	RCR1	RCR3	RCR5
4.0'	35	32	31
5.0'	22	21	20
6.0'	15	14	14
7.0'	13	12	11
8.0'	10	9	9
9.0'	8	7	7
10.0'	6	5	5

ZONAL LUMEN SUMMARY

Zone	Lumens	%Fixture
0 - 30°	487	99.7
0 - 40°	489	100.0
0 - 60°	489	100.0
0 - 90°	489	100.0

INITIAL FOOTCANDLES (One Unit, 12.8W, 14.7° Beam)

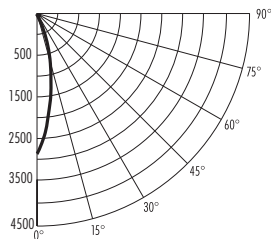
Distance to Illuminated Plane (Feet)	Footcandles Beam Center	Beam Diameter
6	135.7	1.6'
8	76.3	2.1'
10	48.9	2.6'
12	33.9	3.1'

LUMINANCE (Average cd/m²)

Degrees	Average Luminance
45	0
55	0
65	0
75	0
85	0

PHOTOMETRIC REPORT

Test Report #: PTO5122407
 Catalog No: IC43LSQ-830-N-1
 with 4332SQ-WH Trim
 Luminaire Spacing Criterion: 0.37
 Luminaire LPW: 37.4



CANDLEPOWER DISTRIBUTION (Candelas)

Degrees Vertical	0°
0	2884
5	2472
15	745
25	70
35	5
45	0
55	0
65	0
75	0
85	0
90	0
Multipliers:	827 - 0.92 930 - 0.92 835 - 1.01 840 - 1.02

AVERAGE INITIAL FOOTCANDLES

Multiple Units (Square Array, 60'x60' room)
 Ceiling 80% Wall 50% Floor 20%

Spacing	RCR1	RCR3	RCR5
4.0'	34	32	30
5.0'	22	20	19
6.0'	15	14	13
7.0'	12	11	11
8.0'	10	9	8
9.0'	7	7	6
10.0'	5	5	5

ZONAL LUMEN SUMMARY

Zone	Lumens	%Fixture
0 - 30°	480	99.3
0 - 40°	483	100.0
0 - 60°	483	100.0
0 - 90°	483	100.0

INITIAL FOOTCANDLES (One Unit, 12.9W, 21.8° Beam)

Distance to Illuminated Plane (Feet)	Footcandles Beam Center	Beam Diameter
6	80.1	2.3'
8	45.1	3.1'
10	28.8	3.8'
12	20.0	4.6'

LUMINANCE (Average cd/m²)

Degrees	Average Luminance
45	0
55	0
65	0
75	0
85	0

Fixtures tested to IES recommended standard for solid state lighting per LM-79-08. Photometric performance on a single unit represents a baseline of performance for the fixture. Results may vary in the field.

