



LED RECESSED DOWNLIGHT

3-1/4" LENSED REFLECTOR

IC Rated, 700 LUMEN



IC43LSQ-432SQ, IC943LSQ-432SQ

PRODUCT DESCRIPTION

Recessed downlight 13W LED luminaire with 3-1/4" square lensed downlight reflector produces up to 650 fixture lumens and approximates the performance of a 50W MR16 lamp. Fixture has 50° visual cutoff and features precision geared hot-aiming. Sealed Air-Loc® housing ensures maximum energy savings and controls plenum sound transmission. Low profile IC rated housing for use in insulated or non-insulated areas.

PRODUCT SPECIFICATIONS

LED Light Engine Consistent fixture to fixture color consistency within 3-step MacAdam ellipse • 2700K, 3000K, 3500K, or 4000K color temperatures are available with 85 CRI typical • 3000K also available with 93 CRI typical and R9 >80.

Modular Optics Available with 12° Spot, 24° Narrow Flood, or 35° Flood field interchangeable optics • 50° distribution is available when AF3-50DEG accessory lens is used with 12° Spot optic • Patent pending auto-adjusting optic holder maximizes luminaire efficiency by maintaining optimal LED optic position • Accommodates up to three (3) additional beam control lenses and/or filters.

Reflector Lensed, Die cast, parabolic reflector maintains low glare, tight corners, and 50° lamp and lamp image cut-off • Available in haze, black haze, wheat haze, or white finishes.

Trims Style Self Flanged and Flush Mount reflectors utilize precision wound double torsion springs for tight, secure fit to ceiling • Flange is same finish as reflector unless optional painted white flange is specified • For flush mount installations in drywall ceilings use the FMSQ4 flush mount adapter • For flush mount installations in wood, stone, or tile ceilings the FMSQ4-SC*** must be used (specify ceiling thickness and adapter finish).

LED Driver Choice of four drivers to accommodate voltages from 120-277 volts AC • Dedicated 120V (-1) driver is dimmable with most incandescent, magnetic low voltage, and electronic low voltage dimmers • Universal Voltage (-U) driver is dimmable with most 0-10V protocol dimmers • Lutron Hi-Lume® A Series 3-wire (-L) driver is dimmable with 3-wire fluorescent controls and compatible with EcoSystem® • Lutron Hi-Lume® A Series 2-wire (-D) driver is dimmable with 2-wire forward phase dimmers containing a neutral wire • For a list of compatible dimmers, refer to [ACLXLED-DIM](#) • Power Factor > 0.9 • Field replaceable from below or above ceiling.

Life Rated for 50,000 hrs at 70% lumen maintenance.

Warranty 5 years from date of purchase on LED components • Standard Juno Lighting Group product guarantee terms and conditions apply.

Codes/Labels UL and cUL listed for through branch wiring, wet locations • Meets energy code Air Leakage requirements per ASTM E283 • Union made.

Mounting IC43LSQ features Patented (US Patent 8,038,113) Pro-VI™ Bar Hanger System with locking set screws, permitting quick placement of housing within 24" O.C. joists or suspended ceilings • Robust bar eliminates flexing regardless of fixture position • Integral T-bar notch with locking tabs secures housing to suspended ceiling grid • Captive bugle-headed ring shank nail for quick one-step installation • Bar Hanger foot aligns to bottom of construction joist and breaks away for use in suspended ceilings.

IC943LSQ is equipped with vertically adjustable mounting brackets that accept 1/2" conduit, "C" channels (HB-26 or HB-50), linear flat bars (LB-27) or 26" telescoping Real Nail bar hangers (HB-1).

Junction Box Rated for 4 No. 12 AWG 90° C through branch circuit conductors and includes (6) 1/2", (1) 3/4", and (4) Non-metallic sheathed cable knock-outs • Push-in electrical connectors for field connections.

Housing/Mounting Frame Black steel plaster frame and housing painted for visually dark interior • V-Notch in plaster frame and Patented (US Patent 8,277,090) Tru-Line™ Platform featuring +/- 1/2" translation and +/- 45° aperture rotation aids fixture alignment during installation.

Ceiling Thickness 1/2" - 7/8" ceiling standard • For thicker ceilings, order CTA4SQ-125 (7/8"-1 1/4"), CTA4SQ-163 (1 1/4"-1 5/8") or CTA4SQ-200 (1 5/8" - 2") • CTA4SQ not required for wood, stone, or tile flush mount applications.

Project: _____

Fixture Type: _____

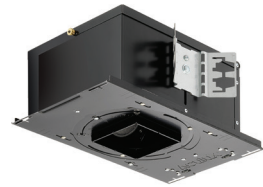
Location: _____

Contact/Phone: _____

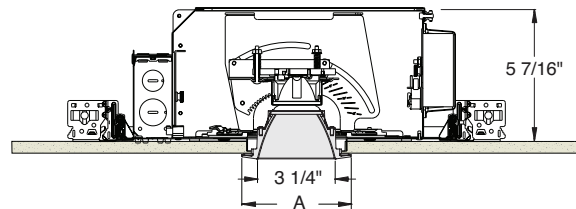
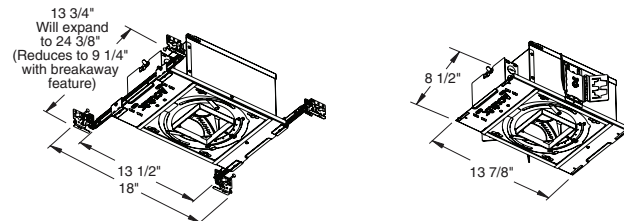
IC43LSQ



IC943LSQ



DIMENSIONS



4 1/8" CEILING CUTOUT
(REFER TO INSTRUCTION SHEET FOR
FLUSH MOUNT CEILING CUTOUT)

	A
Self Flanged	4 1/2"
Flush Mount	3 5/8"

ELECTRICAL DATA

Driver Option	Dedicated 120V (-1)	Universal Voltage (-U)		Lutron 3-wire (-L)	Lutron 2-wire (-D)
Voltage	120	120	277	120	277
Input Power	12.8	13.7	14.1	12.6	13.6
Input Current	0.10	0.11	0.05	0.10	0.05
Frequency	50/60Hz	50/60Hz		50/60Hz	50/60Hz
Power Factor	0.99	0.99	0.90	0.99	0.94

LED RECESSED DOWNLIGHT

3-1/4" LENSED REFLECTOR

IC Rated, 700 LUMEN

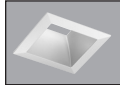

IC43LSQ-432SQ, IC943LSQ-432SQ

Ordering Information Housing, trim and accessories each ordered separately

Example: **IC43LSQ-835-F-1**

Housings	CRI/Color Temperature	Beam Optics	Drivers	Options
IC43LSQ	827 2700K, 85CRI	S 12° Spot	I 120V, Forward & Reverse Phase Dimming	CP Chicago Plenum
IC943LSQ	830 3000K, 85CRI	N 24° Narrow Flood		
	835 3500K, 85CRI	F 35° Flood	U 120-277V, 0-10V Dimming	
	840 4000K, 85CRI		L 120-277V, Lutron Hi-Lume 3-wire Dimming, Ecosystem Compatible	
	930 3000K, 93CRI		D 120V, Lutron Hi-Lume 2-wire Dimming	

Example: **432SQW-SF**

Trim/Description		
		
Self Flanged ¹	Flush Mount ²	Description
432SQBHZ-SF	432SQBHZ-FM	Black Haze Reflector
432SQHZ-SF	432SQHZ-FM	Haze Reflector
432SQW-SF	432SQW-FM	White Reflector
432SQWHZ-SF	432SQWHZ-FM	Wheat Haze Reflector

¹For self flanged reflector with optional white painted flange, replace "-SF" suffix with "-SFWH".

²Flush Mount trims must be used with Flush Mount Adapter, ordered separately.

Product specifications subject to change without notice.

Flush Mount Adapters

Cat. #	Description
FMASQ4	Drywall Ceiling Adapter
FMASQ4-SC100-WH	Wood, Stone, Tile, 1/2"-1" Thick Ceiling, Adapter, White
FMASQ4-SC100-BL	Wood, Stone, Tile, 1/2"-1" Thick Ceiling, Adapter, Black
FMASQ4-SC138-WH	Wood, Stone, Tile, 1"-1 3/8" Thick Ceiling, Adapter, White
FMASQ4-SC138-BL	Wood, Stone, Tile, 1"-1 3/8" Thick Ceiling, Adapter, Black
FMASQ4-SC175-WH	Wood, Stone, Tile, 1 3/8"-1 3/4" Thick Ceiling, Adapter, White
FMASQ4-SC175-BL	Wood, Stone, Tile, 1 3/8"-1 3/4" Thick Ceiling, Adapter, Black

Optical Accessories

Cat. #	Description	Cat. #	Description
TIR-1-SP	12° Spot Optic	T7403	Med. Green Dichroic Lens
TIR-1-NFL	24° Narrow Flood Optic	T7404	Med. Blue Dichroic Lens
TIR-1-FL	35° Flood Optic	T7405	Yellow Dichroic Lens
AF3-50DEG	50° Optic Film (Use with 12° Optic)	T7406	Magenta Dichroic Lens
T741	Med. Pink Color Filter	T7411	Blue Green Dichroic Lens
T742	Warm Red Color Filter	T7416	Daylight Blue Correction Lens
T743	Daylight Blue Color Filter	T7420	Diffuse Spread Lens
T744	Med. Blue Color Filter	T7422	UV Filter Lens
T745	Med. Amber Color Filter	T7477	Prismatic Lens
T746	Med. Green Color Filter	T7478	Linear Spread Lens
T7401	Red Dichroic Lens	T7459BL	Hexcell Louver

Misc. Accessories

Cat. #	Description
CTA45Q-125	1 1/4" Thick Ceiling Adapter
CTA45Q-163	1 5/8" Thick Ceiling Adapter
CTA45Q-200	2" Thick Ceiling Adapter
HB-1	(2) Real Nail 3 Bar Hangers
HB-26	(2) 26" C-Channel Bar Hangers
HB-50	(2) 50" C-Channel Bar Hangers
LB-27	(2) 27" Linear Bar Hangers
EMI-20	20W Emergency Lighting Inverter

To order, specify catalog number.



LED RECESSED DOWNLIGHT

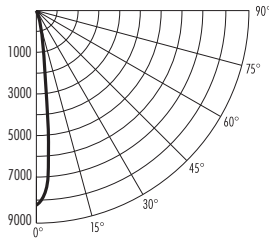
3-1/4" LENSED REFLECTOR

IC Rated, 700 LUMEN

IC43LSQ-432SQ, IC943LSQ-432SQ

PHOTOMETRIC REPORT

Test Report #: PT07102703
 Catalog No: IC43LSQ830-S-1
 with 432SQHZ-SF Trim
 Luminaire Spacing Criterion: 0.24
 Luminaire LPW: 47.7



CANDLEPOWER DISTRIBUTION (Candelas)

Degrees Vertical	0°
0	8223
5	4966
15	378
25	43
35	15
45	0
55	0
65	0
75	0
85	0
90	0
Multipliers:	827 - 0.92 930 - 0.92 835 - 1.01 840 - 1.02

AVERAGE INITIAL FOOTCANDLES

Multiple Units (Square Array, 60'x60' room)
 Ceiling 80% Wall 50% Floor 20%

Spacing	RCR1	RCR3	RCR5
4.0'	44	41	39
5.0'	28	26	25
6.0'	19	18	17
7.0'	16	15	14
8.0'	12	12	11
9.0'	9	9	8
10.0'	7	7	6

INITIAL FOOTCANDLES (One Unit, 12.9W, 24.1° Beam)

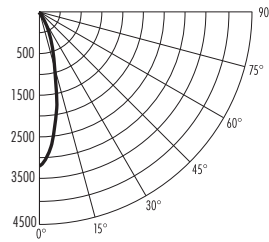
Distance to Illuminated Plane (Feet)	Footcandles Beam Center	Beam Diameter
6	228.4	1.3'
8	128.5	1.7'
10	82.2	2.1'
12	57.1	2.5'

LUMINANCE (Average cd/m²)

Degrees	Average Luminance
45	0
55	0
65	0
75	0
85	0

PHOTOMETRIC REPORT

Test Report #: PT07102602
 Catalog No: IC43LSQ830-N-1
 with 432SQHZ-SF Trim
 Luminaire Spacing Criterion: 0.40
 Luminaire LPW: 47.8



CANDLEPOWER DISTRIBUTION (Candelas)

Degrees Vertical	0°
0	3202
5	2860
15	971
25	120
35	22
45	0
55	0
65	0
75	0
85	0
90	0
Multipliers:	827 - 0.92 930 - 0.92 835 - 1.01 840 - 1.02

AVERAGE INITIAL FOOTCANDLES

Multiple Units (Square Array, 60'x60' room)
 Ceiling 80% Wall 50% Floor 20%

Spacing	RCR1	RCR3	RCR5
4.0'	44	40	37
5.0'	28	26	24
6.0'	19	18	17
7.0'	16	14	13
8.0'	12	11	11
9.0'	9	9	8
10.0'	7	6	6

INITIAL FOOTCANDLES (One Unit, 12.8W, 12.0° Beam)

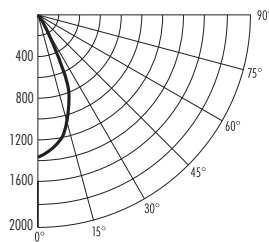
Distance to Illuminated Plane (Feet)	Footcandles Beam Center	Beam Diameter
6	89.0	2.6'
8	50.1	3.4'
10	32.0	4.3'
12	22.2	5.1'

LUMINANCE (Average cd/m²)

Degrees	Average Luminance
45	0
55	0
65	0
75	0
85	0

PHOTOMETRIC REPORT

Test Report #: PT09101602
 Catalog No: IC43LSQ-830-F-1
 with 432SQHZ-SF Trim
 Luminaire Spacing Criterion: 0.65
 Luminaire LPW: 49.9



CANDLEPOWER DISTRIBUTION (Candelas)

Degrees Vertical	0°
0	1352
5	1304
15	985
25	442
35	51
45	4
55	0
65	0
75	0
85	0
90	0
Multipliers:	827 - 0.92 930 - 0.92 835 - 1.01 840 - 1.02

AVERAGE INITIAL FOOTCANDLES

Multiple Units (Square Array, 60'x60' room)
 Ceiling 80% Wall 50% Floor 20%

Spacing	RCR1	RCR3	RCR5
4.0'	45	40	37
5.0'	29	26	23
6.0'	20	18	16
7.0'	16	14	13
8.0'	13	11	10
9.0'	10	9	8
10.0'	7	6	6

INITIAL FOOTCANDLES (One Unit, 12.9W, 41.1° Beam)

Distance to Illuminated Plane (Feet)	Footcandles Beam Center	Beam Diameter
6	37.6	4.5'
8	21.1	6.0'
10	13.5	7.5'
12	9.4	9.0'

LUMINANCE (Average cd/m²)

Degrees	Average Luminance
45	868
55	0
65	0
75	0
85	0

Fixtures tested to IES recommended standard for solid state lighting per LM-79-08. Photometric performance on a single unit represents a baseline of performance for the fixture. Results may vary in the field.



1300 S. Wolf Road • Des Plaines, IL 60018 • Phone (847) 827-9880 • Fax (847) 827-2925
 220 Chrysler Drive • Brampton, Ontario • Canada L6S 6B6 • Phone (905) 792-7335 • Fax (905) 792-0064
 Visit us at www.junolightinggroup.com