



# LED RECESSED DOWNLIGHT

1-3/4" SQUARE REGRESSED  
PINHOLE APERTURE

IC Rated, 700 LUMEN

**IC43LSQ-4307SQ, IC943LSQ-4307SQ**

## PRODUCT DESCRIPTION

Recessed downlight 13W LED luminaire with 1-3/4" square regressed pinhole aperture produces up to 650 fixture lumens and approximates the performance of a 50W MR16 lamp. Fixture has 50° visual cutoff and features precision geared hot-aiming. Sealed Air-Loc® housing ensures maximum energy savings and controls plenum sound transmission. Low profile IC rated housing for use in insulated or non-insulated areas.

## PRODUCT SPECIFICATIONS

**LED Light Engine** Consistent fixture to fixture color consistency within 3-step MacAdam ellipse • 2700K, 3000K, 3500K, or 4000K color temperatures are available with 85 CRI typical • 3000K also available with 93 CRI typical and R9 >80.

**Modular Optics** Available with 12° Spot, 24° Narrow Flood, or 35° Flood field interchangeable optics • 50° distribution is available when AF3-50DEG accessory lens is used with 12° Spot optic • Patent pending auto-adjusting optic holder maximizes luminaire efficiency by maintaining optimal LED optic position • Accommodates up to three (3) additional beam control lenses and/or filters.

**Reflector** .040" aluminum parabolic reflector in black Alzak finish shields housing interior.

**Trims Style** Die cast Self Flanged and Flush Mount trims utilize precision wound double torsion springs for tight, secure fit to ceiling • Flush Mount trim creates a truly trimless aperture • For flush mount installations in drywall ceilings use the FMASQ4 flush mount adapter • For flush mount installations in wood, stone, or tile ceilings the FMASQ4-SC\*\*\* must be used (specify ceiling thickness and adapter finish).

**LED Driver** Choice of four drivers to accommodate voltages from 120-277 volts AC • Dedicated 120V (-I) driver is dimmable with most incandescent, magnetic low voltage, and electronic low voltage dimmers • Universal Voltage (-U) driver is dimmable with most 0-10V protocol dimmers • Lutron Hi-Lume® A Series 3-wire (-L) driver is dimmable with 3-wire fluorescent controls and compatible with EcoSystem® • Lutron Hi-Lume® A Series 2-wire (-D) driver is dimmable with 2-wire forward phase dimmers containing a neutral wire • For a list of compatible dimmers, refer to [ACLXLED-DIM](#) • Power Factor > 0.9 • Field replaceable from below or above ceiling.

**Life** Rated for 50,000 hrs at 70% lumen maintenance.

**Warranty** 5 years from date of purchase on LED components • Standard Juno Lighting Group product guarantee terms and conditions apply.

**Codes/Labels** UL and cUL listed for through branch wiring, damp locations • Meets energy code Air Leakage requirements per ASTM E283 • Union made.

**Mounting** IC43LSQ features Patented (US Patent 8,038,113) Pro-VI™ Bar Hanger System with locking set screws, permitting quick placement of housing within 24" O.C. joists or suspended ceilings • Robust bar eliminates flexing regardless of fixture position • Integral T-bar notch with locking tabs secures housing to suspended ceiling grid • Captive bugle-headed ring shank nail for quick one-step installation • Bar Hanger foot aligns to bottom of construction joist and breaks away for use in suspended ceilings.

IC943LSQ is equipped with vertically adjustable mounting brackets that accept 1/2" conduit, "C" channels (HB-26 or HB-50), linear flat bars (LB-27) or 26" telescoping Real Nail bar hangers (HB-1).

**Junction Box** Rated for 4 No. 12 AWG 90° C through branch circuit conductors and includes (6) 1/2", (1) 3/4", and (4) Non-metallic sheathed cable knock-outs • Push-in electrical connectors for field connections.

**Housing/Mounting Frame** Black steel plaster frame and housing painted for visually dark interior • V-Notch in plaster frame and Patented (US Patent 8,277,090) Tru-Line™ Platform featuring +/- 1/2" translation and +/- 45° aperture rotation aids fixture alignment during installation.

**Ceiling Thickness** 1/2" - 7/8" ceiling standard • For thicker ceilings, order CTA4SQ-125 (7/8"-1 1/4"), CTA4SQ-163 (1 1/4"-1 5/8") or CTA4SQ-200 (1 5/8" - 2") • CTA4SQ not required for wood, stone, or tile flush mount applications.

Project: \_\_\_\_\_

Fixture Type: \_\_\_\_\_

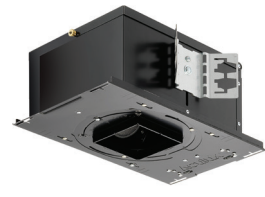
Location: \_\_\_\_\_

Contact/Phone: \_\_\_\_\_

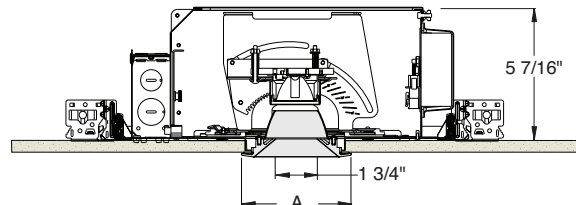
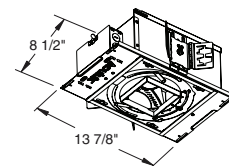
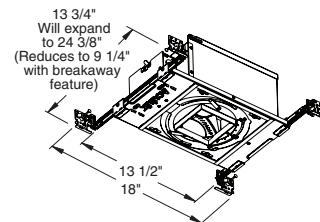
IC43LSQ



IC943LSQ



## DIMENSIONS



4 1/8" CEILING CUTOUT  
(REFER TO INSTRUCTION SHEET FOR  
FLUSH MOUNT CEILING CUTOUT)

	A
Self Flanged	4 1/2"
Flush Mount	3 5/8"

## ELECTRICAL DATA

Driver Option	Dedicated 120V (-I)	Universal Voltage (-U)		Lutron 3-wire (-L)		Lutron 2-wire (-D)
Voltage	120	120	277	120	277	120
Input Power	12.8	13.7	14.1	12.6	13.6	13.5
Input Current	0.10	0.11	0.05	0.10	0.05	0.11
Frequency	50/60Hz	50/60Hz		50/60Hz		50/60Hz
Power Factor	0.99	0.99	0.90	0.99	0.94	0.98

# LED RECESSED DOWNLIGHT

1-3/4" SQUARE REGRESSED PINHOLE APERTURE

IC Rated, 700 LUMEN

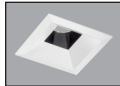

**IC43LSQ-4307SQ, IC943LSQ-4307SQ**

**Ordering Information** Housing, trim and accessories each ordered separately

Example: **IC43LSQ-835-F-1**

Housings	CRI/Color Temperature	Beam Optics	Drivers	Options
<b>IC43LSQ</b>	<b>827</b> 2700K, 85CRI	<b>S</b> 12° Spot	<b>I</b> 120V, Forward & Reverse Phase Dimming	<b>CP</b> Chicago Plenum
<b>IC943LSQ</b>	<b>830</b> 3000K, 85CRI	<b>N</b> 24° Narrow Flood		
	<b>835</b> 3500K, 85CRI	<b>F</b> 35° Flood	<b>U</b> 120-277V, 0-10V Dimming	
	<b>840</b> 4000K, 85CRI		<b>L</b> 120-277V, Lutron Hi-Lume 3-wire Dimming, Ecosystem Compatible	
	<b>930</b> 3000K, 93CRI		<b>D</b> 120V, Lutron Hi-Lume 2-wire Dimming	

Example: **4307SQ-WH**

Trim/Description		
		
<b>Self Flanged</b>	<b>Flush Mount<sup>1</sup></b>	<b>Description</b>
<b>4307SQ-WH</b>	<b>4307SQ-WH-FM</b>	White Trim
<b>4307SQ-BL</b>	<b>4307SQ-BL-FM</b>	Black Trim

<sup>1</sup>Flush Mount trims must be used with Flush Mount Adapter, ordered separately.  
Product specifications subject to change without notice.

**Flush Mount Adapters**

Cat. #	Description
<b>FMASQ4</b>	Drywall Ceiling Adapter
<b>FMASQ4-SC100-WH</b>	Wood, Stone, Tile, 1/2"-1" Thick Ceiling, Adapter, White
<b>FMASQ4-SC100-BL</b>	Wood, Stone, Tile, 1/2"-1" Thick Ceiling, Adapter, Black
<b>FMASQ4-SC138-WH</b>	Wood, Stone, Tile, 1"-1 3/8" Thick Ceiling, Adapter, White
<b>FMASQ4-SC138-BL</b>	Wood, Stone, Tile, 1"-1 3/8" Thick Ceiling, Adapter, Black
<b>FMASQ4-SC175-WH</b>	Wood, Stone, Tile, 1 3/8"-1 3/4" Thick Ceiling, Adapter, White
<b>FMASQ4-SC175-BL</b>	Wood, Stone, Tile, 1 3/8"-1 3/4" Thick Ceiling, Adapter, Black

**Optical Accessories**

Cat. #	Description	Cat. #	Description
<b>TIR-1-SP</b>	12° Spot Optic	<b>T7403</b>	Med. Green Dichroic Lens
<b>TIR-1-NFL</b>	24° Narrow Flood Optic	<b>T7404</b>	Med. Blue Dichroic Lens
<b>TIR-1-FL</b>	35° Flood Optic	<b>T7405</b>	Yellow Dichroic Lens
<b>AF3-50DEG</b>	50° Optic Film (Use with 12° Optic)	<b>T7406</b>	Magenta Dichroic Lens
<b>T741</b>	Med. Pink Color Filter	<b>T7411</b>	Blue Green Dichroic Lens
<b>T742</b>	Warm Red Color Filter	<b>T7416</b>	Daylight Blue Correction Lens
<b>T743</b>	Daylight Blue Color Filter	<b>T7420</b>	Diffuse Spread Lens
<b>T744</b>	Med. Blue Color Filter	<b>T7422</b>	UV Filter Lens
<b>T745</b>	Med. Amber Color Filter	<b>T7477</b>	Prismatic Lens
<b>T746</b>	Med. Green Color Filter	<b>T7478</b>	Linear Spread Lens
<b>T7401</b>	Red Dichroic Lens	<b>T7459BL</b>	Hexcell Louver

**Misc. Accessories**

Cat. #	Description
<b>CTA45Q-125</b>	1 1/4" Thick Ceiling Adapter
<b>CTA45Q-163</b>	1 5/8" Thick Ceiling Adapter
<b>CTA45Q-200</b>	2" Thick Ceiling Adapter
<b>HB-1</b>	(2) Real Nail 3 Bar Hangers
<b>HB-26</b>	(2) 26" C-Channel Bar Hangers
<b>HB-50</b>	(2) 50" C-Channel Bar Hangers
<b>LB-27</b>	(2) 27" Linear Bar Hangers
<b>EMI-20</b>	20W Emergency Lighting Inverter

To order, specify catalog number.



# LED RECESSED DOWNLIGHT

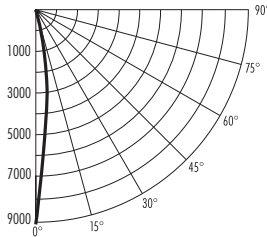
## 1-3/4" SQUARE REGRESSED PINHOLE APERTURE

IC Rated, 700 LUMEN

### IC43LSQ-4307SQ, IC943LSQ-4307SQ

**PHOTOMETRIC REPORT**

Test Report #: PT05122401  
 Catalog No: IC43LSQ-830-S-1  
 with 4307SQ-WH Trim  
 Luminaire Spacing Criterion: 0.24  
 Luminaire LPW: 50.9



**CANDLEPOWER DISTRIBUTION (Candelas)**

Degrees	0°
Vertical	0°
0	9086
5	5469
15	399
25	30
35	5
45	0
55	0
65	0
75	0
85	0
90	0
Multipliers:	827 - 0.92
	930 - 0.92
	835 - 1.01
	840 - 1.02

**AVERAGE INITIAL FOOTCANDLES**

Multiple Units (Square Array, 60'x60' room)  
 Ceiling 80% Wall 50% Floor 20%

Spacing	RCR1	RCR3	RCR5
4.0'	46	44	42
5.0'	30	28	27
6.0'	21	19	19
7.0'	17	16	15
8.0'	13	12	12
9.0'	10	9	9
10.0'	7	7	7

**INITIAL FOOTCANDLES (One Unit, 12.8W, 12.0° Beam)**

Distance to Illuminated Plane (Feet)	Footcandles Beam Center	Beam Diameter
6	252.4	1.3'
8	142.0	1.7'
10	90.9	2.1'
12	63.1	2.5'

**ZONAL LUMEN SUMMARY**

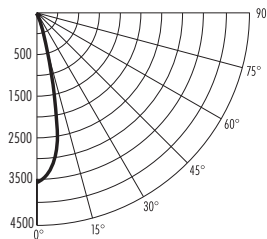
Zone	Lumens	%Fixture
0 - 30°	649	99.5
0 - 40°	652	100.0
0 - 60°	652	100.0
0 - 90°	652	100.0

**LUMINANCE (Average cd/m<sup>2</sup>)**

Degrees	Average Luminance
45	0
55	0
65	0
75	0
85	0

**PHOTOMETRIC REPORT**

Test Report #: PT05122406  
 Catalog No: IC43LSQ-830-N-1  
 with 4307SQ-WH Trim  
 Luminaire Spacing Criterion: 0.4  
 Luminaire LPW: 50.1



**CANDLEPOWER DISTRIBUTION (Candelas)**

Degrees	0°
Vertical	0°
0	3533
5	3140
15	1045
25	83
35	10
45	0
55	0
65	0
75	0
85	0
90	0
Multipliers:	827 - 0.92
	930 - 0.92
	835 - 1.01
	840 - 1.02

**AVERAGE INITIAL FOOTCANDLES**

Multiple Units (Square Array, 60'x60' room)  
 Ceiling 80% Wall 50% Floor 20%

Spacing	RCR1	RCR3	RCR5
4.0'	45	42	39
5.0'	29	27	25
6.0'	20	19	17
7.0'	16	15	14
8.0'	13	12	11
9.0'	10	9	9
10.0'	7	7	6

**INITIAL FOOTCANDLES (One Unit, 12.8W, 23.9° Beam)**

Distance to Illuminated Plane (Feet)	Footcandles Beam Center	Beam Diameter
6	98.1	2.5'
8	55.2	3.4'
10	35.3	4.2'
12	24.5	5.1'

**ZONAL LUMEN SUMMARY**

Zone	Lumens	%Fixture
0 - 30°	634	99.0
0 - 40°	641	100.0
0 - 60°	641	100.0
0 - 90°	641	100.0

**LUMINANCE (Average cd/m<sup>2</sup>)**

Degrees	Average Luminance
45	0
55	0
65	0
75	0
85	0

Fixtures tested to IES recommended standard for solid state lighting per LM-79-08. Photometric performance on a single unit represents a baseline of performance for the fixture. Results may vary in the field.

