



LED RECESSED DOWNLIGHT

3-1/4" BAFFLED APERTURE

IC Rated, 700 LUMEN

IC43L-434N, IC943L-434N



PRODUCT DESCRIPTION

Recessed downlight 13W LED luminaire with 3 1/4" baffled aperture produces up to 700 fixture lumens and approximates the performance of a 50W MR16 lamp. Fixture has 50° visual cutoff and features precision geared hot-aiming. Sealed Air-Loc® housing ensures maximum energy savings and controls plenum sound transmission. Low profile IC rated housing for use in insulated or non-insulated areas.

PRODUCT SPECIFICATIONS

LED Light Engine Consistent fixture to fixture color consistency within 3-step MacAdam ellipse • 2700K, 3000K, 3500K, or 4000K color temperatures are available with 85 CRI typical • 3000K also available with 93 CRI typical and R9 >80.

Modular Optics Available with 12° Spot, 24° Narrow Flood, or 35° Flood field interchangeable optics • 50° distribution is available when AF3-50DEG accessory lens is used with 12° Spot optic • Patent pending auto-adjusting optic holder maximizes luminaire efficiency by maintaining optimal LED optic position • Accommodates up to three (3) additional beam control lenses and/or filters.

Baffle Grooved deep aluminum baffle available in white or black.

Trims Style Utilizes torsion spring retention for tight, secure fit to ceiling • Trim ring features beveled knife edge for clean ceiling interface.

LED Driver Choice of four drivers to accommodate voltages from 120-277 volts AC • Dedicated 120V (-I) driver is dimmable with most incandescent, magnetic low voltage, and electronic low voltage dimmers • Universal Voltage (-U) driver is dimmable with most 0-10V protocol dimmers • Lutron Hi-Lume® A Series 3-wire (-L) driver is dimmable with 3-wire fluorescent controls and compatible with EcoSystem® • Lutron Hi-Lume® A Series 2-wire (-D) driver is dimmable with 2-wire forward phase dimmers containing a neutral wire • For a list of compatible dimmers, refer to [ACLXLED-DIM](#) • Power Factor > 0.9 • Field replaceable from below or above ceiling.

Life Rated for 50,000 hrs at 70% lumen maintenance.

Warranty 5 years from date of purchase on LED components • Standard Juno Lighting Group product guarantee terms and conditions apply.

Codes/Labels UL and cUL listed for through branch wiring, damp locations • Meets energy code Air Leakage requirements per ASTM E283 • ENERGY STAR® Qualified • 90CRI is certified to high efficacy requirements of California T24 with select trims • Union made.

Mounting IC43L features Patented (US Patent 8,038,113) Pro-VI™ Bar Hanger System with locking set screws, permitting quick placement of housing within 24" O.C. joists or suspended ceilings • Robust bar eliminates flexing regardless of fixture position • Integral T-bar notch with locking tabs secures housing to suspended ceiling grid • Captive bugle-headed ring shank nail for quick one-step installation • Bar Hanger foot aligns to bottom of construction joist and breaks away for use in suspended ceilings.

IC943L is equipped with vertically adjustable mounting brackets that accept 1/2" conduit, "C" channels (HB-26 or HB-50), linear flat bars (LB-27) or 26" telescoping Real Nail bar hangers (HB-1).

Junction Box Rated for 4 No. 12 AWG 90° C through branch circuit conductors and includes (6) 1/2", (1) 3/4", and (4) Non-metallic sheathed cable knock-outs • Push-in electrical connectors for field connections.

Housing/Mounting Frame Black steel plaster frame and housing painted for visually dark interior • V-Notch in plaster frame and Patented (US Patent 8,277,090) Tru-Line™ Platform featuring +/- 1/2" translation aids fixture alignment after installation, prior to drywall.

Ceiling Thickness 1/2" – 7/8" ceiling standard • For thicker ceilings, order CTA4N-125 (7/8"-1 1/4"), CTA4N-163 (1 1/4"-1 5/8") or CTA4N-200 (1 5/8" – 2").

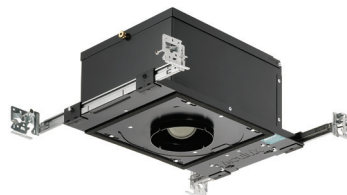
Project: _____

Fixture Type: _____

Location: _____

Contact/Phone: _____

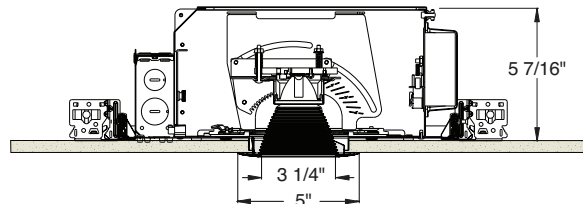
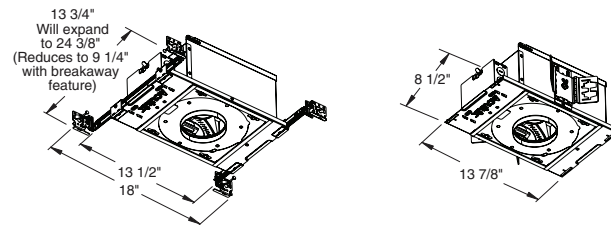
IC43L



IC943L



DIMENSIONS



4 1/4" CEILING CUTOUT

ELECTRICAL DATA

Driver Option	Dedicated 120V (-I)	Universal Voltage (-U)		Lutron 3-wire (-L)		Lutron 2-wire (-D)
Voltage	120	120	277	120	277	120
Input Power	12.8	13.7	14.1	12.6	13.6	13.5
Input Current	0.10	0.11	0.05	0.10	0.05	0.11
Frequency	50/60Hz	50/60Hz		50/60Hz		50/60Hz
Power Factor	0.99	0.99	0.90	0.99	0.94	0.98

LED RECESSED DOWNLIGHT

3-1/4" BAFFLED APERTURE

IC Rated, 700 LUMEN

IC43L-434N, IC943L-434N

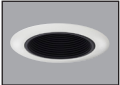
Ordering Information Housing, trim and accessories each ordered separately

Example: **IC43L-830-N-1**

Housings	CRI/Color Temperature	Beam Optics	Drivers	Options
IC43L	827† 2700K, 85CRI	S 12° Spot	I 120V, Forward & Reverse Phase Dimming	CP Chicago Plenum
IC943L	830† 3000K, 85CRI	N 24° Narrow Flood		
	835† 3500K, 85CRI	F 35° Flood	U 120-277V, 0-10V Dimming	
	840† 4000K, 85CRI		L 120-277V, Lutron Hi-Lume 3-wire Dimming, Ecosystem Compatible	
	930 3000K, 93CRI			
			D 120V, Lutron Hi-Lume 2-wire Dimming	

†Not T24 certified.

Example: **434NB-WH**

Trim/Description	
	
Trim Ring	Description
434NB-WH*	Black Baffle, White Ring
434NB-ABZ*	Black Baffle, Aged Bronze Ring
434NB-SC*	Black Baffle, Satin Chrome Ring
434NW-WH	White Baffle, White Ring

Trim Ring Finish: ABZ - Classic Aged Bronze, SC - Satin Chrome, WH - White.
 *Not T24 or ENERGY STAR® Qualified.
 Product specifications subject to change without notice.

Optical Accessories

Cat. #	Description	Cat. #	Description
TIR-1-SP	12° Spot Optic	T7403	Med. Green Dichroic Lens
TIR-1-NFL	24° Narrow Flood Optic	T7404	Med. Blue Dichroic Lens
TIR-1-FL	35° Flood Optic	T7405	Yellow Dichroic Lens
AF3-50DEG	50° Optic Film (Use with 12° Optic)	T7406	Magenta Dichroic Lens
T741	Med. Pink Color Filter	T7411	Blue Green Dichroic Lens
T742	Warm Red Color Filter	T7416	Daylight Blue Correction Lens
T743	Daylight Blue Color Filter	T7420	Diffuse Spread Lens
T744	Med. Blue Color Filter	T7422	UV Filter Lens
T745	Med. Amber Color Filter	T7477	Prismatic Lens
T746	Med. Green Color Filter	T7478	Linear Spread Lens
T7401	Red Dichroic Lens	T7459BL	Hexcell Louver

Misc. Accessories

Cat. #	Description
CTA4N-125	1 1/4" Thick Ceiling Adapter
CTA4N-163	1 5/8" Thick Ceiling Adapter
CTA4N-200	2" Thick Ceiling Adapter
HB-1	(2) Real Nail 3 Bar Hangers
HB-26	(2) 26" C-Channel Bar Hangers
HB-50	(2) 50" C-Channel Bar Hangers
LB-27	(2) 27" Linear Bar Hangers
EMI-20	20W Emergency Lighting Inverter

To order, specify catalog number.



LED RECESSED DOWNLIGHT

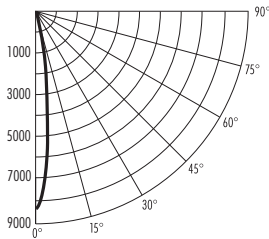
3-1/4" BAFFLED APERTURE

IC Rated, 700 LUMEN

IC43L-434N, IC943L-434N

PHOTOMETRIC REPORT

Test Report #: PT05121501
 Catalog No: IC43L-830-S-1
 with 434NW-WH Trim
 Luminaire Spacing Criterion: 0.24
 Luminaire LPW: 48.8



CANDLEPOWER DISTRIBUTION (Candelas)

Degrees Vertical	0°
0	8865
5	5329
15	395
25	41
35	12
45	4
55	3
65	0
75	0
85	0
90	0

AVERAGE INITIAL FOOTCANDLES

Multiple Units (Square Array, 60'x60' room)
 Ceiling 80% Wall 50% Floor 20%

Spacing	RCR1	RCR3	RCR5
4.0'	45	42	40
5.0'	29	27	26
6.0'	20	19	18
7.0'	16	15	14
8.0'	13	12	11
9.0'	10	9	9
10.0'	7	7	6

ZONAL LUMEN SUMMARY

Zone	Lumens	%Fixture
0-30°	616	97.8
0-40°	625	99.1
0-60°	630	100.0
0-90°	630	100.0

INITIAL FOOTCANDLES (One Unit, 12.9W, 11.9° Beam)

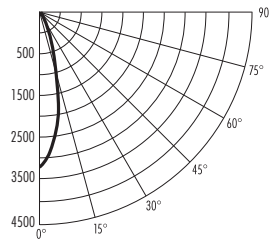
Distance to Illuminated Plane (Feet)	Footcandles Beam Center	Beam Diameter
6	246.2	1.2'
8	138.5	1.7'
10	88.6	2.1'
12	61.5	2.5'

LUMINANCE (Average cd/m²)

Degrees	Average Luminance
45	1107
55	1024
65	0
75	0
85	0

PHOTOMETRIC REPORT

Test Report #: PT05121606
 Catalog No: IC43L-830-N-1
 with 434NW-WH Trim
 Luminaire Spacing Criterion: 0.4
 Luminaire LPW: 51.9



CANDLEPOWER DISTRIBUTION (Candelas)

Degrees Vertical	0°
0	3504
5	3125
15	1046
25	126
35	16
45	4
55	3
65	1
75	0
85	0
90	0

AVERAGE INITIAL FOOTCANDLES

Multiple Units (Square Array, 60'x60' room)
 Ceiling 80% Wall 50% Floor 20%

Spacing	RCR1	RCR3	RCR5
4.0'	47	43	41
5.0'	30	28	26
6.0'	21	19	18
7.0'	17	16	15
8.0'	13	12	12
9.0'	10	9	9
10.0'	8	7	6

ZONAL LUMEN SUMMARY

Zone	Lumens	%Fixture
0-30°	648	96.8
0-40°	662	99.0
0-60°	668	99.8
0-90°	669	100.0

INITIAL FOOTCANDLES (One Unit, 12.9W, 24.0° Beam)

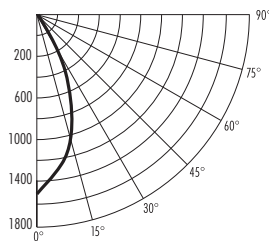
Distance to Illuminated Plane (Feet)	Footcandles Beam Center	Beam Diameter
6	97.3	2.5'
8	54.8	3.4'
10	35.0	4.2'
12	24.3	5.1'

LUMINANCE (Average cd/m²)

Degrees	Average Luminance
45	954
55	882
65	399
75	0
85	0

PHOTOMETRIC REPORT

Test Report #: PT05121705
 Catalog No: IC43L-830-F-1
 with 434NW-WH Trim
 Luminaire Spacing Criterion: 0.65
 Luminaire LPW: 54.7



CANDLEPOWER DISTRIBUTION (Candelas)

Degrees Vertical	0°
0	1507
5	1434
15	1073
25	482
35	46
45	4
55	3
65	2
75	0
85	0
90	0

AVERAGE INITIAL FOOTCANDLES

Multiple Units (Square Array, 60'x60' room)
 Ceiling 80% Wall 50% Floor 20%

Spacing	RCR1	RCR3	RCR5
4.0'	49	44	40
5.0'	31	28	25
6.0'	22	19	18
7.0'	18	16	14
8.0'	14	12	11
9.0'	11	10	9
10.0'	8	7	6

ZONAL LUMEN SUMMARY

Zone	Lumens	%Fixture
0-30°	645	92.0
0-40°	691	98.7
0-60°	699	99.7
0-90°	700	100.0

INITIAL FOOTCANDLES (One Unit, 12.8W, 40.5° Beam)

Distance to Illuminated Plane (Feet)	Footcandles Beam Center	Beam Diameter
4	41.9	4.4'
6	23.5	5.9'
8	15.1	7.4'
10	10.5	8.9'

LUMINANCE (Average cd/m²)

Degrees	Average Luminance
45	954
55	882
65	798
75	0
85	0

Fixtures tested to IES recommended standard for solid state lighting per LM-79-08. Photometric performance on a single unit represents a baseline of performance for the fixture. Results may vary in the field.

Multipliers: 827 - 0.92
 930 - 0.92
 835 - 1.01
 840 - 1.02



1300 S. Wolf Road • Des Plaines, IL 60018 • Phone (847) 827-9880 • Fax (847) 827-2925
 220 Chrysler Drive • Brampton, Ontario • Canada L6S 6B6 • Phone (905) 792-7335 • Fax (905) 792-0064
 Visit us at www.junolightinggroup.com