



# LED RECESSED DOWNLIGHT

3-1/4" LENSED  
DOWNLIGHT CONE

IC Rated, 700 LUMEN



**IC43L-432N, IC943L-432N**

## PRODUCT DESCRIPTION

Recessed downlight 13W LED luminaire with 3 1/4" lensed downlight aperture produces up to 650 fixture lumens and approximates the performance of a 50W MR16 lamp. Fixture has 50° visual cutoff and features precision geared hot-aiming. Sealed Air-Loc® housing ensures maximum energy savings and controls plenum sound transmission. Low profile IC rated housing for use in insulated or non-insulated areas.

## PRODUCT SPECIFICATIONS

**LED Light Engine** Consistent fixture to fixture color consistency within 3-step MacAdam ellipse • 2700K, 3000K, 3500K, or 4000K color temperatures are available with 85 CRI typical • 3000K also available with 93 CRI typical and R9 >80.

**Modular Optics** Available with 12° Spot, 24° Narrow Flood, or 35° Flood field interchangeable optics • 50° distribution is available when AF3-50DEG accessory lens is used with 12° Spot optic • Patent pending auto-adjusting optic holder maximizes luminaire efficiency by maintaining optimal LED optic position • Accommodates up to three (3) additional beam control lenses and/or filters.

**Reflector** .040" aluminum parabolic reflector in clear, gold, black, haze, or wheat haze Alzak finish provides 50° lamp and lamp image cut-off.

**Trims Style** Trim Ring, Self Flanged and Flush Mount reflectors utilize torsion spring retention for tight, secure fit to ceiling • Trim ring features beveled knife edge for clean ceiling interface • Self Flanged reflectors with polished or optional white painted flange • For flush mount installations in drywall ceilings use the FMA4 flush mount adapter • For flush mount installations in wood, stone, or tile ceilings the FMA4-SC\*\*\* must be used (specify ceiling thickness and adapter finish).

**LED Driver** Choice of four drivers to accommodate voltages from 120-277 volts AC • Dedicated 120V (-1) driver is dimmable with most incandescent, magnetic low voltage, and electronic low voltage dimmers • Universal Voltage (-U) driver is dimmable with most 0-10V protocol dimmers • Lutron Hi-Lume® A Series 3-wire (-L) driver is dimmable with 3-wire fluorescent controls and compatible with EcoSystem® • Lutron Hi-Lume® A Series 2-wire (-D) driver is dimmable with 2-wire forward phase dimmers containing a neutral wire • For a list of compatible dimmers, refer to [ACLXLED-DIM](#) • Power Factor > 0.9 • Field replaceable from below or above ceiling.

**Life** Rated for 50,000 hrs at 70% lumen maintenance.

**Warranty** 5 years from date of purchase on LED components • Standard Juno Lighting Group product guarantee terms and conditions apply.

**Codes/Labels** UL and cUL listed for through branch wiring, wet locations • Meets energy code Air Leakage requirements per ASTM E283 • Union made.

**Mounting** IC43L features Patented (US Patent 8,038,113) Pro-VI™ Bar Hanger System with locking set screws, permitting quick placement of housing within 24" O.C. joists or suspended ceilings • Robust bar eliminates flexing regardless of fixture position • Integral T-bar notch with locking tabs secures housing to suspended ceiling grid • Captive bugle-headed ring shank nail for quick one-step installation • Bar Hanger foot aligns to bottom of construction joist and breaks away for use in suspended ceilings.

IC943L is equipped with vertically adjustable mounting brackets that accept 1/2" conduit, "C" channels (HB-26 or HB-50), linear flat bars (LB-27) or 26" telescoping Real Nail bar hangers (HB-1).

**Junction Box** Rated for 4 No. 12 AWG 90° C through branch circuit conductors and includes (6) 1/2", (1) 3/4", and (4) Non-metallic sheathed cable knock-outs • Push-in electrical connectors for field connections.

**Housing/Mounting Frame** Black steel plaster frame and housing painted for visually dark interior • V-Notch in plaster frame and Patented (US Patent 8,277,090) Tru-Line™ Platform featuring +/- 1/2" translation aids fixture alignment after installation, prior to drywall.

**Ceiling Thickness** 1/2" - 7/8" ceiling standard • For thicker ceilings, order CTA4N-125 (7/8"-1 1/4"), CTA4N-163 (1 1/4"-1 5/8") or CTA4N-200 (1 5/8"-2") • CTA4N not required for wood, stone, or tile flush mount applications.

Project: \_\_\_\_\_

Fixture Type: \_\_\_\_\_

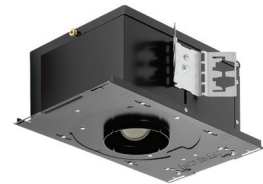
Location: \_\_\_\_\_

Contact/Phone: \_\_\_\_\_

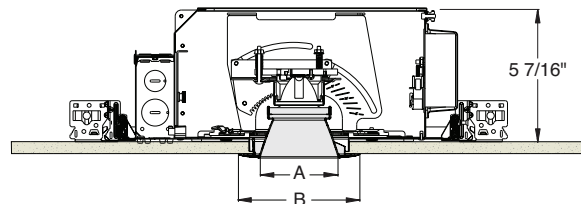
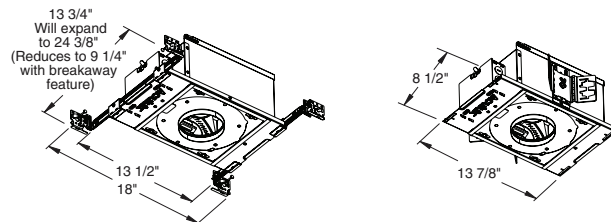
IC43L



IC943L



## DIMENSIONS



4 1/4" CEILING CUTOUT  
(REFER TO INSTRUCTION SHEET FOR  
FLUSH MOUNT CEILING CUTOUT)

	A	B
Trim Ring	3 1/4"	5"
Self Flanged	3 3/8"	4 5/8"
Flush Mount	3 3/8"	3 7/8"

## ELECTRICAL DATA

Driver Option	Dedicated 120V (-1)	Universal Voltage (-U)		Lutron 3-wire (-L)	Lutron 2-wire (-D)
Voltage	120	120	277	120	277
Input Power	12.8	13.7	14.1	12.6	13.6
Input Current	0.10	0.11	0.05	0.10	0.05
Frequency	50/60Hz	50/60Hz		50/60Hz	50/60Hz
Power Factor	0.99	0.99	0.90	0.99	0.94

# LED RECESSED DOWNLIGHT

## 3-1/4" LENSED DOWNLIGHT CONE

IC Rated, 700 LUMEN




### IC43L-432N, IC943L-432N

**Ordering Information** Housing, trim and accessories each ordered separately

Example: **IC43L-830-N-1**

Housings	CRI/Color Temperature	Beam Optics	Drivers	Options
<b>IC43L</b>	<b>827</b> 2700K, 85CRI	<b>S</b> 12° Spot	<b>I</b> 120V, Forward & Reverse Phase Dimming	<b>CP</b> Chicago Plenum
<b>IC943L</b>	<b>830</b> 3000K, 85CRI	<b>N</b> 24° Narrow Flood		
	<b>835</b> 3500K, 85CRI	<b>F</b> 35° Flood	<b>U</b> 120-277V, 0-10V Dimming	
	<b>840</b> 4000K, 85CRI		<b>L</b> 120-277V, Lutron Hi-Lume 3-wire Dimming, Ecosystem Compatible	
	<b>930</b> 3000K, 93CRI		<b>D</b> 120V, Lutron Hi-Lume 2-wire Dimming	

Example: **432NC-WH**

Trim/Description			
Trim Ring <sup>1</sup>	Self Flanged <sup>2</sup>	Flush Mount <sup>3</sup>	Description
			
<b>432NB-WH</b>	<b>432NB-SF</b>	<b>432NB-FM</b>	Black Cone
<b>432NC-WH</b>	<b>432NC-SF</b>	<b>432NC-FM</b>	Clear Cone
<b>432NG-WH</b>	<b>432NG-SF</b>	<b>432NG-FM</b>	Gold Cone
<b>432NHZ-SC</b>	-	-	Haze Cone
<b>432NHZ-WH</b>	<b>432NHZ-SF</b>	<b>432NHZ-FM</b>	Haze Cone, White Ring
<b>432NWHZ-ABZ</b>	-	-	Wheat Haze Cone
<b>432NWHZ-WH</b>	<b>432NWHZ-SF</b>	<b>432NWHZ-FM</b>	Wheat Haze Cone, White Ring

<sup>1</sup>Trim Ring Finish: ABZ - Classic Aged Bronze, SC - Satin Chrome, WH - White.  
<sup>2</sup>For self flanged reflector with optional white painted flange, replace "-SF" suffix with "-SFWH".  
<sup>3</sup>Flush Mount trims must be used with Flush Mount Adapter, ordered separately.  
 Product specifications subject to change without notice.

**Flush Mount Adapters**

Cat. #	Description
<b>FMA4</b>	Drywall Ceiling Adapter
<b>FMA4-SC087-WH</b>	Wood, Stone, Tile, 1/2"-7/8" Thick Ceiling, Adapter, White
<b>FMA4-SC087-BL</b>	Wood, Stone, Tile, 1/2"-7/8" Thick Ceiling, Adapter, Black
<b>FMA4-SC125-WH</b>	Wood, Stone, Tile, 7/8"-1 1/4" Thick Ceiling, Adapter, White
<b>FMA4-SC125-BL</b>	Wood, Stone, Tile, 7/8"-1 1/4" Thick Ceiling, Adapter, Black
<b>FMA4-SC163-WH</b>	Wood, Stone, Tile, 1 1/4"-1 5/8" Thick Ceiling, Adapter, White
<b>FMA4-SC163-BL</b>	Wood, Stone, Tile, 1 1/4"-1 5/8" Thick Ceiling, Adapter, Black

**Optical Accessories**

Cat. #	Description	Cat. #	Description
<b>TIR-1-SP</b>	12° Spot Optic	<b>T7403</b>	Med. Green Dichroic Lens
<b>TIR-1-NFL</b>	24° Narrow Flood Optic	<b>T7404</b>	Med. Blue Dichroic Lens
<b>TIR-1-FL</b>	35° Flood Optic	<b>T7405</b>	Yellow Dichroic Lens
<b>AF3-50DEG</b>	50° Optic Film (Use with 12° Optic)	<b>T7406</b>	Magenta Dichroic Lens
<b>T741</b>	Med. Pink Color Filter	<b>T7411</b>	Blue Green Dichroic Lens
<b>T742</b>	Warm Red Color Filter	<b>T7416</b>	Daylight Blue Correction Lens
<b>T743</b>	Daylight Blue Color Filter	<b>T7420</b>	Diffuse Spread Lens
<b>T744</b>	Med. Blue Color Filter	<b>T7422</b>	UV Filter Lens
<b>T745</b>	Med. Amber Color Filter	<b>T7477</b>	Prismatic Lens
<b>T746</b>	Med. Green Color Filter	<b>T7478</b>	Linear Spread Lens
<b>T7401</b>	Red Dichroic Lens	<b>T7459BL</b>	Hexcell Louver

**Misc. Accessories**

Cat. #	Description
<b>CTA4N-125</b>	1 1/4" Thick Ceiling Adapter
<b>CTA4N-163</b>	1 5/8" Thick Ceiling Adapter
<b>CTA4N-200</b>	2" Thick Ceiling Adapter
<b>HB-1</b>	(2) Real Nail 3 Bar Hangers
<b>HB-26</b>	(2) 26" C-Channel Bar Hangers
<b>HB-50</b>	(2) 50" C-Channel Bar Hangers
<b>LB-27</b>	(2) 27" Linear Bar Hangers
<b>EMI-20</b>	20W Emergency Lighting Inverter

To order, specify catalog number.



# LED RECESSED DOWNLIGHT

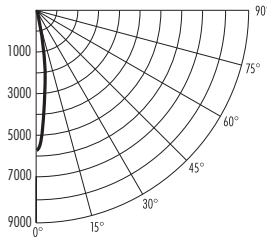
## 3-1/4" LENSED DOWNLIGHT CONE

IC Rated, 700 LUMEN

### IC43L-432N, IC943L-432N

**PHOTOMETRIC REPORT**

Test Report #: PT05121604  
 Catalog No: IC43L-830-S-1  
 with 432NC-WH Trim  
 Luminaire Spacing Criterion: 0.29  
 Luminaire LPW: 48.0



**CANDLEPOWER DISTRIBUTION (Candelas)**

Degrees Vertical	0°
0	5828
5	4012
15	684
25	80
35	16
45	0
55	0
65	0
75	0
85	0
90	0

**AVERAGE INITIAL FOOTCANDLES**

Multiple Units (Square Array, 60'x60' room)  
 Ceiling 80% Wall 50% Floor 20%

Spacing	RCR1	RCR3	RCR5
4.0'	44	41	38
5.0'	28	26	25
6.0'	19	18	17
7.0'	16	15	14
8.0'	12	12	11
9.0'	10	9	8
10.0'	7	7	6

**INITIAL FOOTCANDLES (One Unit, 12.8W, 14.5° Beam)**

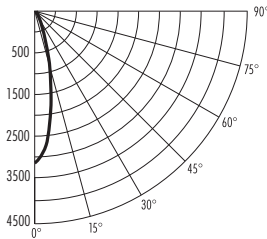
Distance to Illuminated Plane (Feet)	Footcandles Beam Center	Beam Diameter
6	161.9	1.5'
8	91.1	2.0'
10	58.3	2.5'
12	40.5	3.1'

**LUMINANCE (Average cd/m<sup>2</sup>)**

Degrees	Average Luminance
45	0
55	0
65	0
75	0
85	0

**PHOTOMETRIC REPORT**

Test Report #: PT05121702  
 Catalog No: IC43L-830-N-1  
 with 432NC-WH Trim  
 Luminaire Spacing Criterion: 0.39  
 Luminaire LPW: 50.4



**CANDLEPOWER DISTRIBUTION (Candelas)**

Degrees Vertical	0°
0	3280
5	2679
15	1019
25	191
35	28
45	2
55	0
65	0
75	0
85	0
90	0

**AVERAGE INITIAL FOOTCANDLES**

Multiple Units (Square Array, 60'x60' room)  
 Ceiling 80% Wall 50% Floor 20%

Spacing	RCR1	RCR3	RCR5
4.0'	46	42	39
5.0'	29	27	25
6.0'	20	19	17
7.0'	17	15	14
8.0'	13	12	11
9.0'	10	9	8
10.0'	7	7	6

**INITIAL FOOTCANDLES (One Unit, 12.9W, 23.1° Beam)**

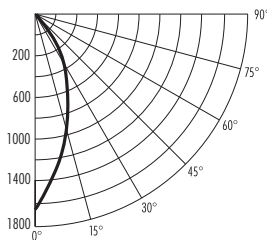
Distance to Illuminated Plane (Feet)	Footcandles Beam Center	Beam Diameter
6	91.1	2.4'
8	51.3	3.3'
10	32.8	4.1'
12	22.8	4.9'

**LUMINANCE (Average cd/m<sup>2</sup>)**

Degrees	Average Luminance
45	477
55	0
65	0
75	0
85	0

**PHOTOMETRIC REPORT**

Test Report #: PT05121704  
 Catalog No: IC43L-830-F-1  
 with 432NC-WH Trim  
 Luminaire Spacing Criterion: 0.57  
 Luminaire LPW: 51.9



**CANDLEPOWER DISTRIBUTION (Candelas)**

Degrees Vertical	0°
0	1622
5	1397
15	954
25	421
35	89
45	12
55	0
65	0
75	0
85	0
90	0

**AVERAGE INITIAL FOOTCANDLES**

Multiple Units (Square Array, 60'x60' room)  
 Ceiling 80% Wall 50% Floor 20%

Spacing	RCR1	RCR3	RCR5
4.0'	46	42	37
5.0'	30	27	24
6.0'	21	18	17
7.0'	17	15	13
8.0'	13	12	11
9.0'	10	9	8
10.0'	7	7	6

**INITIAL FOOTCANDLES (One Unit, 12.8W, 35.1° Beam)**

Distance to Illuminated Plane (Feet)	Footcandles Beam Center	Beam Diameter
4	45.1	3.8'
6	25.3	5.1'
8	16.2	6.3'
10	11.3	7.6'

**LUMINANCE (Average cd/m<sup>2</sup>)**

Degrees	Average Luminance
45	2623
55	0
65	0
75	0
85	0

Fixtures tested to IES recommended standard for solid state lighting per LM-79-08. Photometric performance on a single unit represents a baseline of performance for the fixture. Results may vary in the field.

- Multipliers: 827 - 0.92  
 930 - 0.92  
 835 - 1.01  
 840 - 1.02

