

## FEATURES & SPECIFICATIONS

### INTENDED USE

This fresh and innovative track head combines aesthetics with superior functionality for applications such as specialty retail, grocery, galleries, museums, hospitality, residential and educational environments. Paired with an MR16 GU10 LED lamp, the spotlight track head provides high-quality, eco-friendly lighting solutions.

### CONSTRUCTION

Lamp Holder: Multi-directional die-cast aluminum "Spotlight" shade using MR16GU10 LED lamps (included) to shed light in desired areas. Kit includes (1) 4' track (120V), (1) floating feed, (3) MR16GU10 LED Lamps and (3) adjustable LTHSPLT track heads.

Tilt: 60 degrees

Pan: 350 degrees

Adaptor: Low-profile injection-molded track mounting adaptor compatible with Lithonia Lighting track series (LTS), Cooper Lighting Halo® "H" L641 and L651 Track. Snap lock secures adaptor to track.

**Note: Lithonia Decorative Track Lighting components are not compatible with Lithonia Commercial Track Lighting components. Installation of mixed components will result in risk of shock hazard or fire, damage of fixture, failure to illuminate, and it does not meet UL standards.**

Rated Life: 22.8 years based on 3 hours per day.

Lumen Output: 300 lumens, 4.5W

Color Temperature (CCT): 2700 K

CRI: 80

### ELECTRICAL

MR16 LED lamp uses GU10 base 12V porcelain bipin twist lock socket. 120 VAC 60Hz.

Lamp included.

### LISTINGS

cETL<sub>US</sub> listed to UL1574 Track Lighting Standard.

Dry location.

### WARRANTY

3-year limited warranty. Complete warranty terms located at:

[www.acuitybrands.com/CustomerResources/Terms\\_and\\_conditions.aspx](http://www.acuitybrands.com/CustomerResources/Terms_and_conditions.aspx).

Note: Actual performance may differ as a result of end-user environment and application.

All values are design or typical values, measured under laboratory conditions at 25 °C.

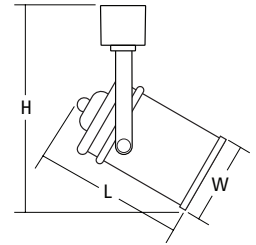
Specifications subject to change without notice.

Catalog Number
Notes
Type

### Decorative Track Lighting

# LTKSPLT MR16GU10 LED

Spotlight Track Kit  
MR16GU10 LED Lamp

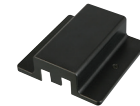


Specifications		
Width	Length	Maximum height
3	5-1/8	5-3/4

All dimensions are inches (centimeters) unless otherwise indicated.



44" black track (120V)  
(included)



LTFC - floating feed  
(included)



LTHSPLT (qty 3) -  
adjustable track heads  
(included)

### ORDERING INFORMATION

All configurations of this product are considered "standard" and have short lead times.

**Example:** LTKSPLT MR16GU10 LED 27K BN

Series	LED, Lumen output	Color temperature	Finish
LTKSPLT LED lamp "Spotlight" track kit	MR16GU10 LED 4.5W, 300 lumens (per head)	27K 2700K	ORB Oil-rubbed bronze BN Brushed nickel

### Replacement lamp

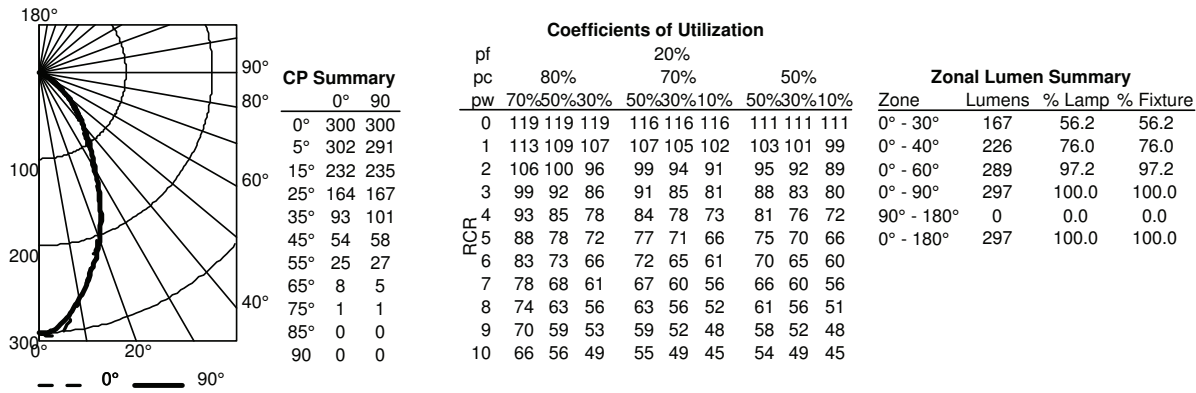
\*232UVK - RK1 300L MR16GU10 27K LAMP

# LTKSPLT MR16 GU10 LED Lamp Track KIT

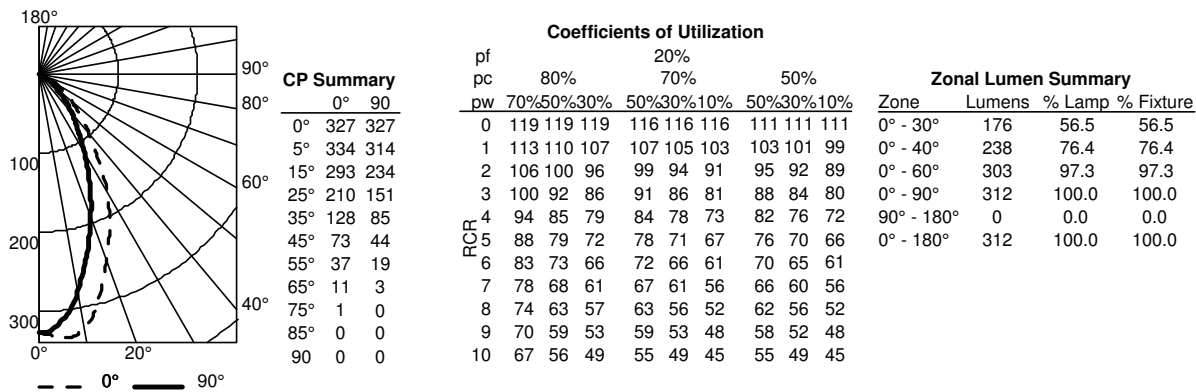
## PHOTOMETRICS

Distribution Curve	Distribution Data	Output Data	Coefficient of Utilization	Illuminance Data at 30" Above Floor for a Single Luminaire
--------------------	-------------------	-------------	----------------------------	--

**LTKSPLT BN**, 2700 K LEDs, input watts: 4.3, delivered lumens: 297, LM/W = 69, test no. LTL28654, tested in accordance with IESNA LM 79-08

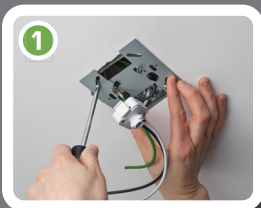


**LTKSPLT ORB**, 2700 K LEDs, input watts: 4.3, delivered lumens: 312, LM/W = 72, test no. LTL28655, tested in accordance with IESNA LM 79-08



## INSTALLATION INSTRUCTIONS

### Easy to Install in 4 Steps



Install mounting plate to ceiling.



Connect track to mounting plate and wire.



Attach track to ceiling.



Simply twist heads onto track.