



TRAC-LITES

120V PAR16/MR16 GU10 SERIES

**R711, R712, R713, R714, R715,
R716, R717 and R718**

Project: _____

Fixture Type: _____

Location: _____

Contact/Phone: _____

PRODUCT DESCRIPTION

Lampholder Ceramic base twist-and-lock GU10 socket with nickel plated contacts.

Aiming 90° vertical aiming capability and 358° rotation.

Adapter Copper alloy contacts provide precise spring action • True, positive electrical ground • On/off switch included • Patented embossed polarity arrows on bottom of adapter • Spring-loaded locking latch with embossed polarity arrows secures trac light to trac • Compatible with both Trac-Lites and Trac-Master Trac • “Pull-up” contact to up position for use on Trac-Master two-circuit trac.

Labels UL/CUL listed.

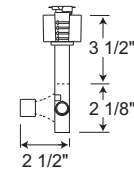
Product specifications subject to change without notice.



Line Voltage GU10 Open Back Spotlight

Construction Drawn steel housing with die-formed steel yoke.

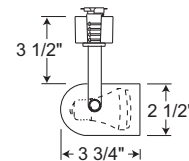
Catalog Number	Finish	Lamp
R711WH	White	120V, 35-50W PAR16/MR16 GU10
R711BL	Black	120V, 35-50W PAR16/MR16 GU10



Line Voltage GU10 Round Back Cylinder

Construction Drawn steel housing with die-formed steel yoke.

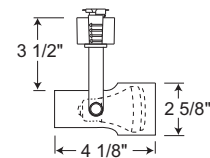
Catalog Number	Finish	Lamp
R712WH	White with Black Bezel	120V, 35-50W PAR16/MR16 GU10
R712BL	Black with Black Bezel	120V, 35-50W PAR16/MR16 GU10



Line Voltage GU10 Step Cylinder

Construction Drawn steel housing with die-formed steel yoke.

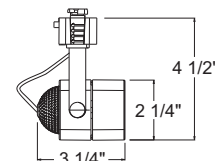
Catalog Number	Finish	Lamp
R713WH	White with Black Bezel	120V, 35-50W PAR16/MR16 GU10
R713BL	Black with Black Bezel	120V, 35-50W PAR16/MR16 GU10



Line Voltage GU10 Cast Cube

Construction Die cast aluminum housing with die-formed steel yoke.

Catalog Number	Finish	Lamp
R714WH	White	120V, 35-50W PAR16/MR16 GU10
R714BL	Black	120V, 35-50W PAR16/MR16 GU10
R714SC	Satin Chrome	120V, 35-50W PAR16/MR16 GU10
R714BZ	Painted Bronze	120V, 35-50W PAR16/MR16 GU10



TRAC-LITES

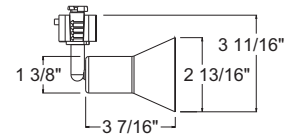
120V PAR16/MR16 GU10 SERIES

R711, R712, R713, R714, R715,
R716, R717 and R718

Line Voltage GU10 Flare

Construction Drawn steel housing with machined steel stem.

Catalog Number	Finish	Lamp
R715WH	White	120V, 35-50W PAR16/MR16 GU10
R715BL	Black	120V, 35-50W PAR16/MR16 GU10
R715SC	Satin Chrome	120V, 35-50W PAR16/MR16 GU10
R715BZ	Painted Bronze	120V, 35-50W PAR16/MR16 GU10

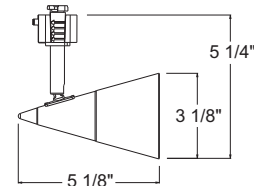


Line Voltage GU10 Glass Cone

Construction Machined aluminum rear housing with machined steel stem

• Semi-opaque conical front glass accent in complementary colors.

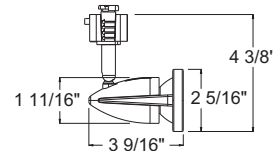
Catalog Number	Housing Finish	Glass Color	Lamp
R716WH	White	Opal Frost	120V, 35-50W PAR16/MR16 GU10
R716BL	Black	Opal Frost	120V, 35-50W PAR16/MR16 GU10
R716SC	Satin Chrome	Opal Frost	120V, 35-50W PAR16/MR16 GU10
R716BZ	Painted Bronze	Amber Frost	120V, 35-50W PAR16/MR16 GU10



Line Voltage GU10 Odyssey

Construction Die cast aluminum housing with machined steel stem.

Catalog Number	Finish	Lamp
R717WH	White	120V, 35-50W PAR16/MR16 GU10
R717BL	Black	120V, 35-50W PAR16/MR16 GU10
R717SC	Satin Chrome	120V, 35-50W PAR16/MR16 GU10
R717BZ	Painted Bronze	120V, 35-50W PAR16/MR16 GU10



Line Voltage GU10 Bell

Construction Die cast aluminum housing and swivel arm • Deep lamp regression and spun aluminum step baffle to reduce glare.

Catalog Number	Finish	Lamp
R718WH	White	120V, 35-50W PAR16/MR16 GU10
R718BL	Black	120V, 35-50W PAR16/MR16 GU10
R718SC	Satin Chrome	120V, 35-50W PAR16/MR16 GU10
R718BZ	Hand-Rubbed Bronze	120V, 35-50W PAR16/MR16 GU10

