



Project: _____

Fixture Type: _____

Location: _____

Contact/Phone: _____



5" IC 900 LUMEN LED DOWNLIGHT NEW CONSTRUCTION

IC920LEDG4 RECESSED HOUSING

HYPERBOLIC TRIMS

PRODUCT DESCRIPTION

Dedicated LED, Air-Loc® sealed new construction housing with integral light engine • Shallow housing allows for fit in 2 x 6 construction • Can be completely covered with insulation • Fully sealed housing stops infiltration and exfiltration of air, reducing heating and air cooling costs without the use of additional gaskets • LED housing is designed to provide 50,000 hours of life and is compatible with many standard Juno trims • 5 year limited warranty on LED components.

ENVIRONMENTALLY FRIENDLY, ENERGY EFFICIENT

- No harmful ultraviolet or infrared wavelengths
- No lead or mercury
- Comparable light output to 75W PAR30 incandescent

PRODUCT SPECIFICATIONS

LED Light Engine LED array integrated to thermally conductive housing provides uninterrupted heat transfer to ensure long life of the LED

- Replaceable light engine mounts directly to housing and incorporates the latest generation, high lumen output LED array • LEDs are binned within a 3-step MacAdam Ellipse exceeding ENERGY STAR® requirements for superior fixture to fixture color uniformity • 2700K, 3000K, 3500K, or 4100K color temperatures available • 90 CRI minimum.

Hyperbolic Optical System Unique hyperbolic reflector shape optimized for small, directional LED source provides unique aperture appearance with reduced brightness • NMCT™ nano mixing chamber (provided with trim) with high reflectance white finish coupled with a high transmission diffusing lens conceals the LED and integrates with the hyperbolic trim to create a low glare, efficient system.

Aesthetic Trim Selections Hyperbolic reflector available in clear Alzak®, haze, wheat haze, black Alzak® and white • Shadow free, knife edge design blends seamlessly into ceiling • Installs with torsion springs.

LED Driver Choice of dedicated 120 volt driver or universal voltage driver that accommodates input voltages from 120-277 volts AC at 50/60Hz • Power factor > 0.9 at 120V input • 120 volt only driver is dimmable with the use of most incandescent, magnetic low voltage and electronic low voltage wall box dimmers • Universal voltage driver is dimmable with the use of most 0-10V wall box dimmers • For a list of compatible dimmers, see [JUNOICLED-DIM](#) • Mounted between the j-box and housing for easy access and cool operation.

Life Rated for 50,000 hours at 70% lumen maintenance.

Labels ENERGY STAR® Qualified when used with select trims • Certified to the high efficacy requirements of California T24 with select trims • UL listed for U.S. and Canada through-branch wiring, damp locations • Union made • UL and cUL.

Testing All reports are based on published industry procedures; field performance may differ from laboratory performance.

Product specifications subject to change without notice.

HOUSING FEATURES

Housing Designed for use in IC (insulated ceiling) or non-IC construction • Aluminum housing sealed for Air-Loc® compliance • Housing is vertically adjustable to accommodate up to a 2" ceiling thickness.

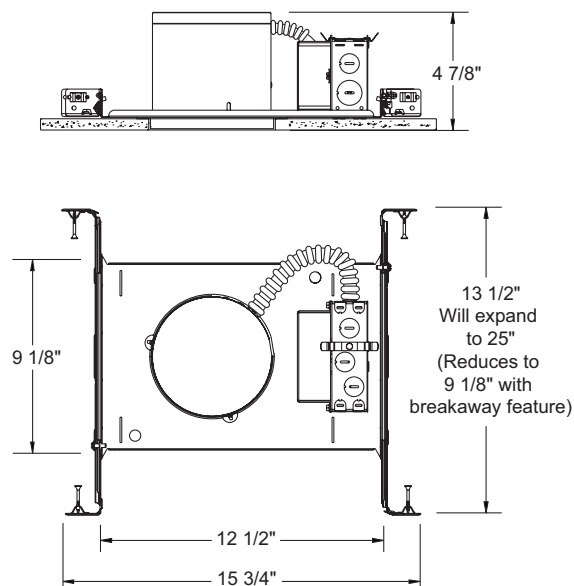
Junction Box Pre-wired junction box provided with (5) 1/2" and (1) 3/4" knockouts, (4) knockouts for 12/2 or 14/2 NM cable and ground wire • UL listed and cUL listed for through-branch wiring, maximum 8 #12 branch circuit conductors • Junction box provided with removable access plates • Knockouts equipped with pryout slots • Quick connect electrical connectors supplied as standard for fast, secure installation.

Mounting Frame 22-gauge die-formed galvanized steel mounting frame • Rough-in section (junction box, mounting frame, housing and bar hangers) fully assembled for ease of installation.

Real Nail 3 Bar Hangers Telescoping Real Nail 3® system permits quick placement of housing anywhere within 24" O.C. joists or suspended ceilings • Includes removable nail for repositioning of fixture in wood joist construction • Integral T-bar notch and clip for suspended ceilings • Design covered under Patent D552,969.



DIMENSIONS



5 5/8" CEILING CUTOUT

ELECTRICAL DATA

Dedicated 120V Only Driver Option

120V	
Input Power	15.7W (+/-5%)
Input Current	0.13A
Frequency	50/60Hz
EMI/RFI	FCC Title 47 CFR, Part 15 Class B (residential)
Minimum starting temp	-25°C

ELECTRICAL DATA

Universal Voltage

	120V	277V
Input Power	16.7W (+/-5%)	16.5W (+/-5%)
Input Current	0.14A	0.06A
Frequency	50/60Hz	50/60Hz
EMI/RFI	FCC Title 47 CFR, Part 15 Class A (commercial)	FCC Title 47 CFR, Part 15 Class A (commercial)
Minimum starting temp	-40°C	-40°C

5" IC 900 LUMEN LED DOWNLIGHT NEW CONSTRUCTION


IC920LEDG4 RECESSED HOUSING HYPERBOLIC TRIMS

ORDERING INFORMATION: Housing and trim each ordered separately.

Example: **IC920LEDG4-3K-1**

Housing	Color Temperature	Input Voltage
IC920LEDG4	27K 2700K 3K 3000K 35K 3500K 41K 4100K	1 Dedicated 120V Only (Forward Phase + ELV dimmable) U Universal Voltage, 120-277V (0-10V dimmable)

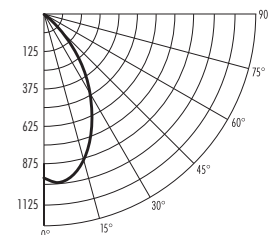
Example: **204HYP3-HZ-WH**

Trim/Description		
	204HYP3-C-WH¹ 204HYP3-B-WH¹ 204HYP3-W-WH² 204HYP3-HZ-WH² 204HYP3-WHZ-WH³ 204HYP3-WHZ-ABZ⁴	Clear Alzak® Black Alzak® White Haze Wheat Haze Wheat Haze ¹ Not ENERGY STAR® Qualified or T24 certified ² Universal Voltage: Not ENERGY STAR® Qualified or T24 certified ³ Universal Voltage: ENERGY STAR® Qualified and T24 certified @ 35K, 41K only ⁴ Universal Voltage: ENERGY STAR® Qualified and T24 certified @ 41K only
Trim Size: 6 1/4" O.D. Trim Finish: ABZ - Classic Aged Bronze, WH - White. Alzak is a registered trademark of Alcoa Corp. Note: In Canada when insulation is present, Type IC fixtures must be used.		

PHOTOMETRIC REPORT

Test Report #: PT03140404
Catalog No: IC920LEDG4-35K
with 204HYP3-C-WH Trim
and standard nano mixing
chamber

Luminaire Spacing Criterion: 0.94
Luminaire LPW: 55



CANDLEPOWER DISTRIBUTION (Candelas)

Degrees Vertical	0°
0	960
5	990
15	893
25	644
35	303
45	61
55	0
65	0
75	0
85	0
90	0
Multiplier: 27K - 0.93 3K - 0.99 41K - 1.01	

AVERAGE INITIAL FOOTCANDLES

Multiple Units (Square Array, 60'x60' room)
Ceiling 80% Wall 50% Floor 20%

Spacing	RCR1	RCR3	RCR5
4.0'	61	53	47
5.0'	39	34	30
6.0'	27	24	21
7.0'	22	19	17
8.0'	17	15	13
9.0'	13	12	10
10.0'	10	9	7

ZONAL LUMEN SUMMARY

Zone	Lumens	%Lamp	%Fixture
0-30°	635	N/A	72.1
0-40°	827	N/A	93.9
0-60°	880	N/A	100.0
0-90°	880	N/A	100.0

INITIAL FOOTCANDLES (One Unit, 16W, 59.8° Beam)

Distance to Illuminated Plane (Feet)	Footcandles Beam Center	Beam Diameter
4	60.0	4.6'
6	26.7	6.9'
8	15.0	9.2'
10	9.6	11.5'

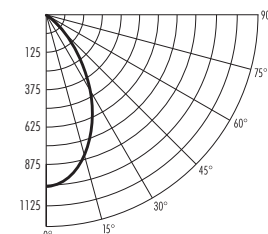
LUMINANCE (Average cd/m²)

Degrees	Average 0° Luminance
45	8200
55	16
65	0
75	0
85	0

PHOTOMETRIC REPORT

Test Report #: PT03140405
Catalog No: IC920LEDG4-35K
with 204HYP3-HZ-WH Trim
and standard nano mixing
chamber

Luminaire Spacing Criterion: 0.88
Luminaire LPW: 53



CANDLEPOWER DISTRIBUTION (Candelas)

Degrees Vertical	0°
0	1011
5	993
15	839
25	618
35	296
45	108
55	1
65	0
75	0
85	0
90	0
Multiplier: 27K - 0.93 3K - 0.99 41K - 1.01	

AVERAGE INITIAL FOOTCANDLES

Multiple Units (Square Array, 60'x60' room)
Ceiling 80% Wall 50% Floor 20%

Spacing	RCR1	RCR3	RCR5
4.0'	59	51	45
5.0'	38	33	29
6.0'	26	23	20
7.0'	21	18	16
8.0'	17	15	13
9.0'	13	11	10
10.0'	9	8	7

ZONAL LUMEN SUMMARY

Zone	Lumens	%Lamp	%Fixture
0-30°	608	N/A	71.4
0-40°	795	N/A	93.3
0-60°	852	N/A	100.0
0-90°	852	N/A	100.0

INITIAL FOOTCANDLES (One Unit, 16W, 59.8° Beam)

Distance to Illuminated Plane (Feet)	Footcandles Beam Center	Beam Diameter
4	63.2	4.6'
6	28.1	6.9'
8	15.8	9.2'
10	10.1	11.5'

LUMINANCE (Average cd/m²)

Degrees	Average 0° Luminance
45	8727
55	93
65	0
75	0
85	0

Fixtures tested to IES recommended standard for solid state lighting per LM-79-08. Photometric performance on a single unit represents a baseline of performance for the fixture. Results may vary in the field.



1300 S. Wolf Road • Des Plaines, IL 60018 • Phone (847) 827-9880 • Fax (847) 827-2925
220 Chrysler Drive • Brampton, Ontario • Canada L6S 6B6 • Phone (905) 792-7335 • Fax (905) 792-0064
Visit us at www.junolightinggroup.com

Printed in U.S.A. ©2014 Juno Lighting, LLC.