

# JUNO®

Project: \_\_\_\_\_

Fixture Type: \_\_\_\_\_

Location: \_\_\_\_\_

Contact/Phone: \_\_\_\_\_

## 5" IC 600 LUMEN WARMDIM™ LED DOWNLIGHT NEW CONSTRUCTION

IC20LWDG3 RECESSED HOUSING

OPEN TRIMS



### PRODUCT DESCRIPTION

Dedicated LED, Air-Loc® sealed new construction housing with WarmDim™ technology (patent pending) • LED color temperature warms while dimming to emulate the dimming performance of traditional incandescent light sources • Shallow housing allows for fit in 2 x 6 construction • Can be completely covered with insulation • Fully sealed housing stops infiltration and exfiltration of air, reducing heating and air cooling costs without the use of additional gaskets • LED housing is designed to provide 50,000 hours of life and is compatible with many standard Juno trims • 5 year limited warranty on LED components.

### ENVIRONMENTALLY FRIENDLY, ENERGY EFFICIENT

- No harmful ultraviolet or infrared wavelengths
- No lead or mercury
- Comparable light output to 65W BR30 incandescent while consuming less than 15W



### PRODUCT SPECIFICATIONS

**LED Light Engine** Proprietary micro processor controlled light engine emulates dimming performance of incandescent light source • Replaceable light engine integrated to one piece high purity aluminum, thermally conductive housing provides uninterrupted heat transfer to ensure long life of the LEDs • 3000K color temperature at full lumen output • 83 CRI typical.

**Optical System** Computer-optimized reflector design with high reflectance white finish coupled with a high transmission diffusing lens conceals the LEDs and produces uniform aperture luminance • Deep regression of lens produces a low glare, efficient system that can produce over 600 lumens with select trims (see page 2 for details) using less than 15W • Wide flood distribution shipped as standard with optional optic accessory available and sold separately.

**Aesthetic Trim Selections** Compatible with wide selection of existing Juno trims • Shadow free, knife edge design blends seamlessly into ceiling.

**LED Driver** Dedicated 120 volt driver • Power factor > 0.9 • Dimmable with the use of most incandescent, magnetic low voltage and electronic low voltage wall box dimmers • For a list of compatible dimmers, see [JUNOLEDG3-6-WARMDIM](#) • Mounted between the j-box and housing for easy access and cool operation.

**Life** Rated for 50,000 hours at 70% lumen maintenance.

**Labels** Certified to the high efficiency requirements of California T24-2008 with select trims • UL listed for U.S. and Canada through-branch wiring, damp locations • Union made • UL and cUL.

**Testing** All reports are based on published industry procedures; field performance may differ from laboratory performance.

Product specifications subject to change without notice.

### HOUSING FEATURES

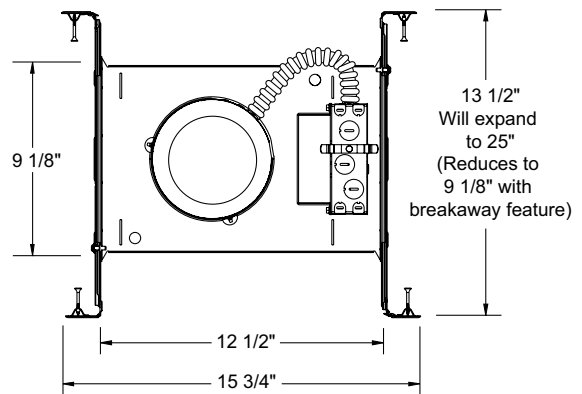
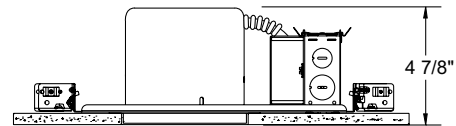
**Housing** Designed for use in IC (insulated ceiling) or non-IC construction • Aluminum housing sealed for Air-Loc® compliance • Housing is vertically adjustable to accommodate up to a 2" ceiling thickness.

**Junction Box** Pre-wired junction box provided with (5) 1/2" and (1) 3/4" knockouts, (4) knockouts for 12/2 or 14/2 NM cable and ground wire • UL listed and cUL listed for through-branch wiring, maximum 8 #12 branch circuit conductors • Junction box provided with removable access plates • Knockouts equipped with pryout slots • Quick connect electrical connectors supplied as standard for fast, secure installation.

**Mounting Frame** 22-gauge die-formed galvanized steel mounting frame • Rough-in section (junction box, mounting frame, housing and bar hangers) fully assembled for ease of installation.

**Real Nail 3 Bar Hangers** Telescoping Real Nail 3® system permits quick placement of housing anywhere within 24" O.C. joists or suspended ceilings • Includes removable nail for repositioning of fixture in wood joist construction • Integral T-bar notch and clip for suspended ceilings • Design covered under Patents US5,505,419 and D552,969.

### DIMENSIONS

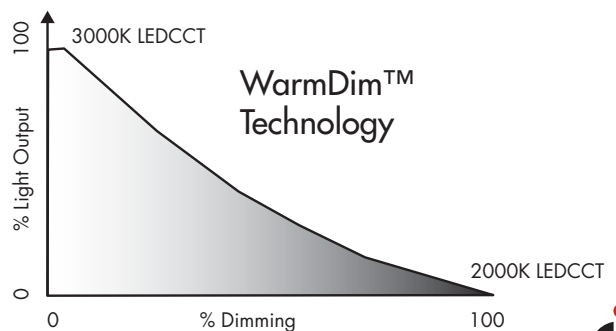


5 5/8" CEILING CUTOUT

### ELECTRICAL DATA

#### Dedicated 120V Only Driver

120V	
Input Power	14W (+/-5%)
Input Current - Max	0.125A
Frequency	50/60 Hz
EMI/RFI	FCC Title 47 CFR, Part 18 Class B (consumer)
Minimum starting temp	-20°C



# 5" IC 600 LUMEN WARMDIM™ LED DOWNLIGHT NEW CONSTRUCTION



## IC20LWDG3 RECESSED HOUSING OPEN TRIMS

**ORDERING INFORMATION:** Housing, trim and accessories each ordered separately.

Example: **IC20LWDG3-3K-1**

Housing	Color Temperature	Input Voltage
IC20LWDG3	3K 3000K	1 Dedicated 120V Only (Forward Phase + ELV dimmable)

Example: **205W-WH**

Trim/Description
 <b>205W-WH</b> White Baffle <b>205B-WH</b> Black Baffle <b>205B-SC</b> Black Baffle <b>205B-ABZ</b> Black Baffle   <b>204C-WH</b> Cone in Clear Alzak® <b>204G-WH</b> Cone in Gold Alzak® <b>204B-WH</b> Cone in Black Alzak® <b>204PT-SC</b> Cone in Pewter Alzak® <b>204W-WH</b> Cone in Gloss White <b>204HZ-WH</b> Cone in Haze <b>204WHZ-WH</b> Cone in Wheat Haze <b>204WHZ-ABZ</b> Cone in Wheat Haze

### ACCESSORIES

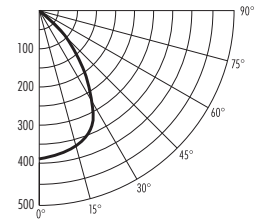
Catalog No.	Description
<b>LEDOPTICG3-M</b>	Medium Flood Optic (50°)

To order, specify catalog number.

Trim Size: 6 1/4" O.D.  
 Trim Finish: ABZ - Classic Aged Bronze, SC - Satin Chrome, WH - White.  
 Alzak is a registered trademark of Alcoa Corp.  
 Note: In Canada when insulation is present, Type IC fixtures must be used.

### PHOTOMETRIC REPORT

Test Report #: L1L27633  
 Catalog No: IC20LWDG3-3K-1  
 with 205W-WH Trim  
 and standard wide flood optic  
 Luminaire Spacing Criterion: 1.10  
 Luminaire LPW: 43.3



### CANDLEPOWER DISTRIBUTION (Candelas)

Degrees Vertical	0°
0	389
5	388
15	373
25	323
35	218
45	104
55	55
65	31
75	19
85	5
90	0

### AVERAGE INITIAL FOOTCANDLES

Multiple Units (Square Array, 60'x60' room)  
 Ceiling 80% Wall 50% Floor 20%

Spacing	RCR1	RCR3	RCR5
4.0'	41	34	28
5.0'	26	22	18
6.0'	18	15	12
7.0'	15	12	10
8.0'	12	10	8
9.0'	9	7	6
10.0'	7	5	4

### INITIAL FOOTCANDLES (One Unit, 14.1W , 73.5° Beam)

Distance to Illuminated Plane (Feet)	Footcandles Beam Center	Beam Diameter
4	24.3	6.0'
6	10.8	9.0'
8	6.1	11.9'
10	3.9	14.9'

### ZONAL LUMEN SUMMARY

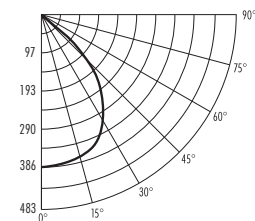
Zone	Lumens	%Lamp	%Fixture
0-30°	289	N/A	47.3
0-40°	424	N/A	69.3
0-60°	556	N/A	90.9
0-90°	612	N/A	100.0

### LUMINANCE (Average cd/m²)

Degrees	Average Luminance
45	14360
55	9327
65	7155
75	7058
85	5072

### PHOTOMETRIC REPORT

Test Report #: PT01121703R  
 Catalog No: IC20LWDG3-3K-1  
 with 204C-WH Trim  
 and standard wide flood optic  
 Luminaire Spacing Criterion: 1.22  
 Luminaire LPW: 50



### CANDLEPOWER DISTRIBUTION (Candelas)

Degrees Vertical	0°
0	386
5	383
15	370
25	346
35	268
45	147
55	76
65	36
75	3
85	0
90	0

### AVERAGE INITIAL FOOTCANDLES

Multiple Units (Square Array, 60'x60' room)  
 Ceiling 80% Wall 50% Floor 20%

Spacing	RCR1	RCR3	RCR5
4.0'	47	38	32
5.0'	30	24	20
6.0'	21	17	14
7.0'	17	14	11
8.0'	13	11	9
9.0'	10	8	7
10.0'	7	6	5

### INITIAL FOOTCANDLES (One Unit, 13.9W , 82.1° Beam)

Distance to Illuminated Plane (Feet)	Footcandles Beam Center	Beam Diameter
4	24.1	7.0'
6	10.7	10.4'
8	6.0	13.9'
10	3.9	17.4'

### ZONAL LUMEN SUMMARY

Zone	Lumens	%Lamp	%Fixture
0-30°	299	N/A	43.2
0-40°	464	N/A	67.1
0-60°	649	N/A	93.7
0-90°	693	N/A	100.0

### LUMINANCE (Average cd/m²)

Degrees	Average Luminance
45	16364
55	10407
65	6736
75	1065
85	0

Fixtures tested to IES recommended standard for solid state lighting per LM-79-08. Photometric performance on a single unit represents a baseline of performance for the fixture. Results may vary in the field.



1300 S. Wolf Road • Des Plaines, IL 60018 • Phone (847) 827-9880 • Fax (847) 827-2925  
 220 Chrysler Drive • Brampton, Ontario • Canada L6S 6B6 • Phone (905) 792-7335 • Fax (905) 792-0064  
 Visit us at [www.junolightinggroup.com](http://www.junolightinggroup.com)