



Project: _____

Fixture Type: _____

Location: _____

Contact/Phone: _____

5" IC 600 LUMEN LED DOWNLIGHT NEW CONSTRUCTION

IC20LEDG3 RECESSED HOUSING

OPEN TRIMS



PRODUCT DESCRIPTION

Dedicated LED, Air-Loc® sealed new construction housing with integral light engine • Shallow housing allows for fit in 2 x 6 construction • Can be completely covered with insulation • Fully sealed housing stops infiltration and exfiltration of air, reducing heating and air cooling costs without the use of additional gaskets • LED housing is designed to provide 50,000 hours of life and is compatible with many standard Juno trims • 5 year limited warranty on LED components.

ENVIRONMENTALLY FRIENDLY, ENERGY EFFICIENT

- No harmful ultraviolet or infrared wavelengths
- No lead or mercury
- Comparable light output to 65W BR30 incandescent while consuming less than 11W*



PRODUCT SPECIFICATIONS

LED Light Engine LED array integrated to one piece high purity aluminum, thermally conductive housing provides uninterrupted heat transfer to ensure long life of the LED • Replaceable light engine mounts directly to housing and incorporates the latest generation, high lumen output LED array • LEDs are binned to standards that exceed ENERGY STAR® requirements yielding superior fixture to fixture color uniformity • 2700K, 3000K, 3500K, or 4100K color temperatures available • 83 CRI typical.

Optical System Computer-optimized reflector design with high reflectance white finish coupled with a high transmission diffusing lens conceals the LEDs and produces uniform aperture luminance • Wide flood distribution shipped as standard with optional optic accessories available and sold separately.

Aesthetic Trim Selections Compatible with wide selection of existing Juno trims • Shadow free, knife edge design blends seamlessly into ceiling. • Trims are wet location approved for covered applications.

LED Driver Choice of dedicated 120 volt driver or universal voltage driver that accommodates input voltages from 120-277 volts AC at 50/60Hz • Power factor > 0.9 at 120V input • 120 volt only driver is dimmable with the use of most incandescent, magnetic low voltage and electronic low voltage wall box dimmers • Universal voltage driver is dimmable with the use of most 0-10V wall box dimmers • For a list of compatible dimmers, see [JUNOLEDG3-DIM](#) • Mounted between the j-box and housing for easy access and cool operation.

Life Rated for 50,000 hours at 70% lumen maintenance.

Labels ENERGY STAR® qualified to luminaires V1.1 requirements when used with select baffle and cone trims • Certified to the high efficiency requirements of California T24-2008 with select trims • UL listed for U.S and Canada through-branch wiring, damp locations • Union made • UL and cUL.

Testing All reports are based on published industry procedures; field performance may differ from laboratory performance.

Product specifications subject to change without notice.

HOUSING FEATURES

Housing Designed for use in IC (insulated ceiling) or non-IC construction • Aluminum housing sealed for Air-Loc® compliance • Housing is vertically adjustable to accommodate up to a 2" ceiling thickness.

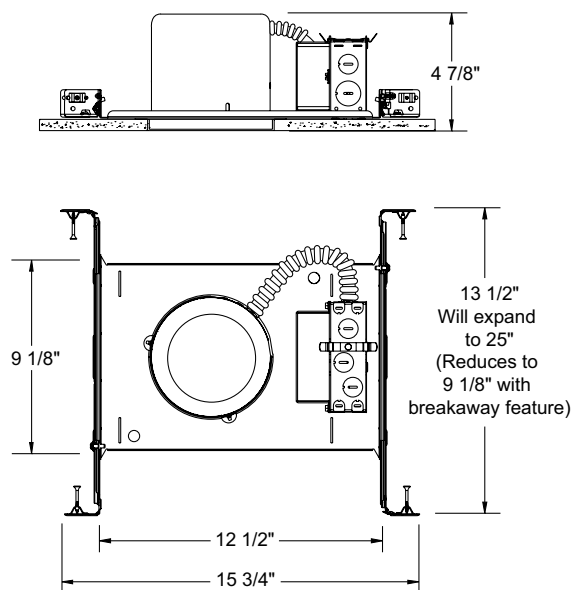
Junction Box Pre-wired junction box provided with (5) 1/2" and (1) 3/4" knockouts, (4) knockouts for 12/2 or 14/2 NM cable and ground wire • UL listed and cUL listed for through-branch wiring, maximum 8 #12 branch circuit conductors • Junction box provided with removable access plates • Knockouts equipped with pryout slots • Quick connect electrical connectors supplied as standard for fast, secure installation.

Mounting Frame 22-gauge die-formed galvanized steel mounting frame • Rough-in section (junction box, mounting frame, housing and bar hangers) fully assembled for ease of installation.

Real Nail 3 Bar Hangers Telescoping Real Nail 3® system permits quick placement of housing anywhere within 24" O.C. joists or suspended ceilings • Includes removable nail for repositioning of fixture in wood joist construction • Integral T-bar notch and clip for suspended ceilings • Design covered under Patents US5,505,419 and D552,969.

* Nominal input wattage @ 120-volt operation with dedicated 120-volt driver under stable operating conditions.

DIMENSIONS



5 5/8" CEILING CUTOUT

ELECTRICAL DATA

Dedicated 120V Only Driver Option

120V	
Input Power	10.5W (+/-5%)
Input Current - Max	0.10A
Frequency	50/60Hz
EMI/RFI	FCC Title 47 CFR, Part 18, Class B (consumer)
Minimum starting temp	-20°C

ELECTRICAL DATA

Universal Voltage

	120V	277V
Input Power	12W (+/-5%)	12.3W (+/-5%)
Input Current - Max	0.11A	0.055A
Frequency	50/60Hz	50/60Hz
EMI/RFI	FCC Title 47 CFR, Part 15, Class A (non-consumer)	FCC Title 47 CFR, Part 15, Class A (non-consumer)
Minimum starting temp	-40°C	-40°C

5" IC 600 LUMEN LED DOWNLIGHT NEW CONSTRUCTION

IC20LEDG3 RECESSED HOUSING OPEN TRIMS

ORDERING INFORMATION: Housing, trim and accessories each ordered separately.

Example: **IC20LEDG3-3K-1**

Housing	Color Temperature	Input Voltage
IC20LEDG3	27K 2700K 3K 3000K 35K 3500K 41K 4100K	1 Dedicated 120V Only (Forward Phase + ELV dimmable) U Universal Voltage, 120-277V (0-10V dimmable)

Example: **205W-WH**

Trim/Description	
205W-WH White Baffle 205B-WH^{1,2,3} Black Baffle 205B-SC^{1,2,3} Black Baffle 205B-ABZ^{1,2,3} Black Baffle	¹ Not ENERGY STAR rated ² 120V only: T24 @ 35K, 41K only ³ Universal Voltage: Not T24 certified ⁴ 120V only: T24 @ 3K, 35K, 41K only
204C-WH Cone in Clear Alzak® 204G-WH Cone in Gold Alzak® 204B-WH^{1,2,4} Cone in Black Alzak® 204PT-SC Cone in Pewter Alzak® 204W-WH Cone in Gloss White 204HZ-WH Cone in Haze 204WHZ-WH Cone in Wheat Haze 204WHZ-ABZ Cone in Wheat Haze	

Trim Size: 6 1/4" O.D.

Trim Finish: ABZ - Classic Aged Bronze, SC - Satin Chrome, WH - White.
Alzak is a registered trademark of Alcoa Corp.

Note: In Canada when insulation is present, Type IC fixtures must be used.

ACCESSORIES

Catalog No.	Description
LEDOPTICG3-M	Medium Flood Optic (50°)
LEDOPTICG3-N	Narrow Flood Optic (37°)
LEDOPTICG3-S	Spot Optic (10°)

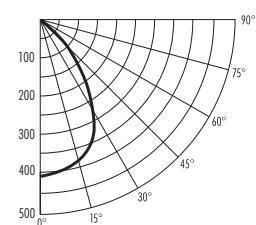
To order, specify catalog number.

PHOTOMETRIC REPORT

Test Report #: LTL25982
Catalog No: IC20LEDG3-35K
with 205W-WH Trim
and standard wide flood optic

Luminaire Spacing Criterion: 1.10

Luminaire LPW: 60.3



CANDLEPOWER DISTRIBUTION (Candelas)

Degrees Vertical	0°
0	408
5	406
15	389
25	337
35	228
45	108
55	58
65	32
75	19
85	5
90	0

Multiplier: 27K - 0.90
3K - 0.97
41K - 1.04

AVERAGE INITIAL FOOTCANDLES

Multiple Units (Square Array, 60'x60' room)
Ceiling 80% Wall 50% Floor 20%

Spacing	RCR1	RCR3	RCR5
4.0'	44	37	31
5.0'	28	23	20
6.0'	19	16	14
7.0'	16	13	11
8.0'	12	10	9
9.0'	10	8	7
10.0'	7	6	5

ZONAL LUMEN SUMMARY

Zone	Lumens	%Lamp	%Fixture
0-30°	302	N/A	47.3
0-40°	442	N/A	69.5
0-60°	580	N/A	91.1
0-90°	637	N/A	100.0

INITIAL FOOTCANDLES (One Unit, 10.6W, 73.4° Beam)

Distance to Illuminated Plane (Feet)	Footcandles Beam Center	Beam Diameter
4	25.5	6.0'
6	11.3	8.9'
8	6.4	11.9'
10	4.1	14.9'

LUMINANCE (Average cd/m²)

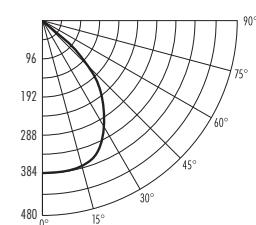
Degrees	Average Luminance
45	15700
55	10350
65	7793
75	7525
85	5385

PHOTOMETRIC REPORT

Test Report #: LTL25981R
Catalog No: IC20LEDG3-35K
with 204C-WH Trim
and standard wide flood optic

Luminaire Spacing Criterion: 1.26

Luminaire LPW: 67



CANDLEPOWER DISTRIBUTION (Candelas)

Degrees Vertical	0°
0	382
5	380
15	366
25	345
35	283
45	153
55	79
65	38
75	7
85	0
90	0

Multiplier: 27K - 0.90
3K - 0.97
41K - 1.04

AVERAGE INITIAL FOOTCANDLES

Multiple Units (Square Array, 60'x60' room)
Ceiling 80% Wall 50% Floor 20%

Spacing	RCR1	RCR3	RCR5
4.0'	49	41	35
5.0'	31	26	22
6.0'	22	18	16
7.0'	18	15	13
8.0'	14	12	10
9.0'	11	9	8
10.0'	8	7	6

ZONAL LUMEN SUMMARY

Zone	Lumens	%Lamp	%Fixture
0-30°	298	N/A	42.0
0-40°	472	N/A	66.4
0-60°	663	N/A	93.3
0-90°	711	N/A	100.0

INITIAL FOOTCANDLES (One Unit, 10.6W, 83.8° Beam)

Distance to Illuminated Plane (Feet)	Footcandles Beam Center	Beam Diameter
4	23.9	7.2'
6	10.6	10.8'
8	6.0	14.4'
10	3.8	17.9'

LUMINANCE (Average cd/m²)

Degrees	Average Luminance
45	21114
55	13401
65	8704
75	2507
85	0

Fixtures tested to IES recommended standard for solid state lighting per LM-79-08. Photometric performance on a single unit represents a baseline of performance for the fixture. Results may vary in the field.



1300 S. Wolf Road • Des Plaines, IL 60018 • Phone (847) 827-9880 • Fax (847) 827-2925
220 Chrysler Drive • Brampton, Ontario • Canada L6S 6B6 • Phone (905) 792-7335 • Fax (905) 792-0064
Visit us at www.junolightinggroup.com

Printed in U.S.A. ©2011 Juno Lighting, LLC.